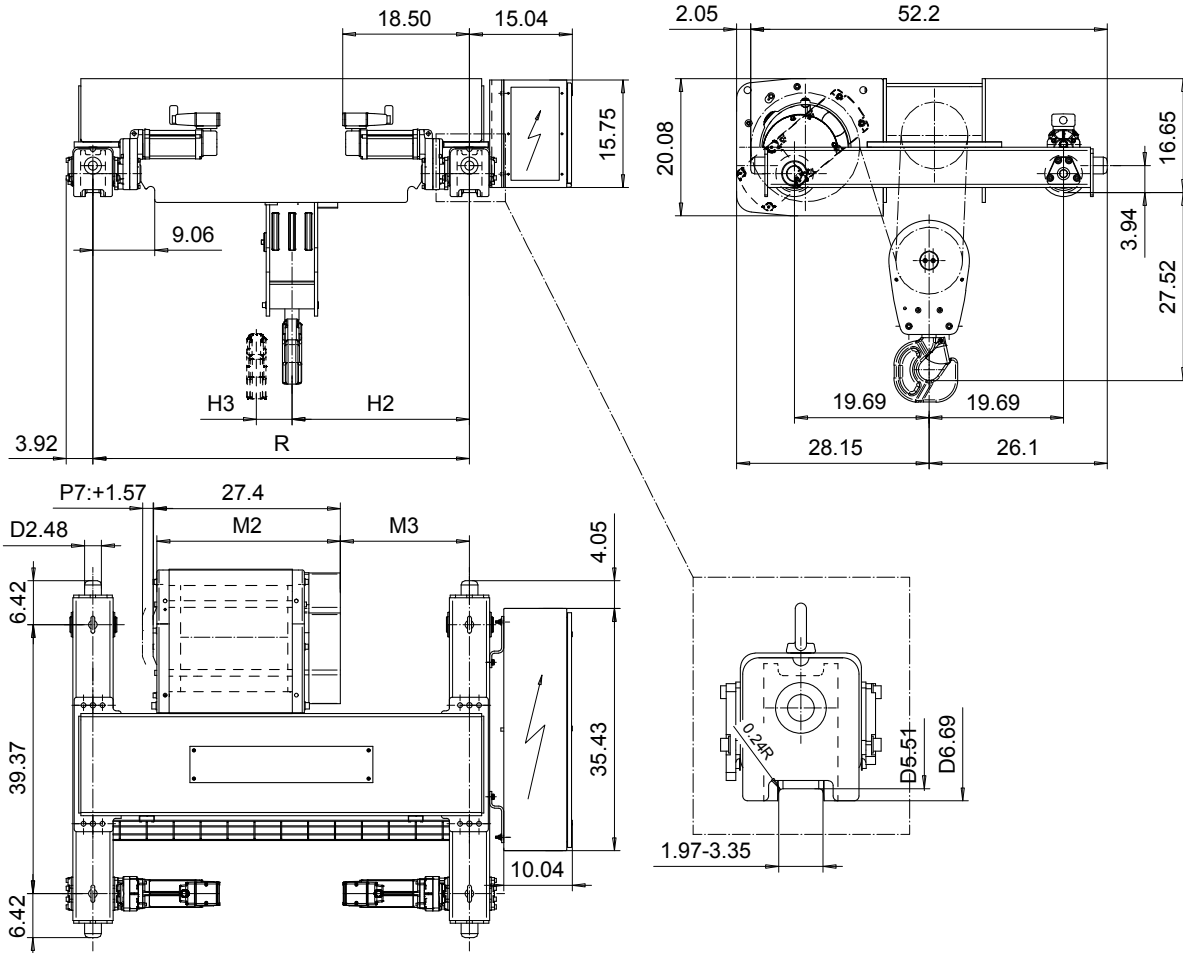


DOUBLE GIRDER, MEDIUM, 6 PART SINGLE
Hoist type:
SX5 061...D0

US-60Hz



Load (TON)	Class ASME	Hoisting speed (ft/min)		
		Gear+Motor code:		
		F+P5	H+P6	J+P7
12	H4+	12.5/1.9	20/3.1	25/3.9
15	H4	12.5/1.9	20/3.1	25/3.9
+ weight (lb):		-	60	80

HOL (ft)	Length code	M2 (inch)	M3 (inch)	H2 (inch)	H3 (inch)	min R (ft)	Weight (lb)
19'-8"	D	26.85	18.89	25.86	2.08	4'-7 1/8"	1550
26'-2"	E	31.57	24.80	31.77	3.07	5'-6 7/8"	1640
32'-9"	F	37.48	30.31	37.48	3.85	6'-6 3/4"	1710
42'-7"	G	44.96	38.18	45.35	5.19	7'-10 1/2"	1770

Note: minR is minimum rail gauge when second brake is supplied
 Standard rail gauges are 4'-7 1/8", 5'-6 7/8", 6'-6 3/4", and 7'-10 1/2"

This document is the absolute property of R&M Materials Handling, Inc. This document must not be copied without the written permission of R&M Materials Handling, Inc. The contents thereof must not be disclosed to a third party nor be used for any unauthorized purpose. Contravention will be prosecuted.

ETFPAL Design 2002-08-30 Date	ETFPAL Chd Appd	Ref Drawing	QC-M-06
SLEQDCV Owner Dept	TROLLEY; DOUBLE GIRDER MEDIUM, 6 ROPE FALLS		1 of 12 Folder
R&M R&M MATERIALS HANDLING, INC. HOIST & CRANE PRODUCTS SHERBOURNE, ONT.	D002124-A		Issue 5