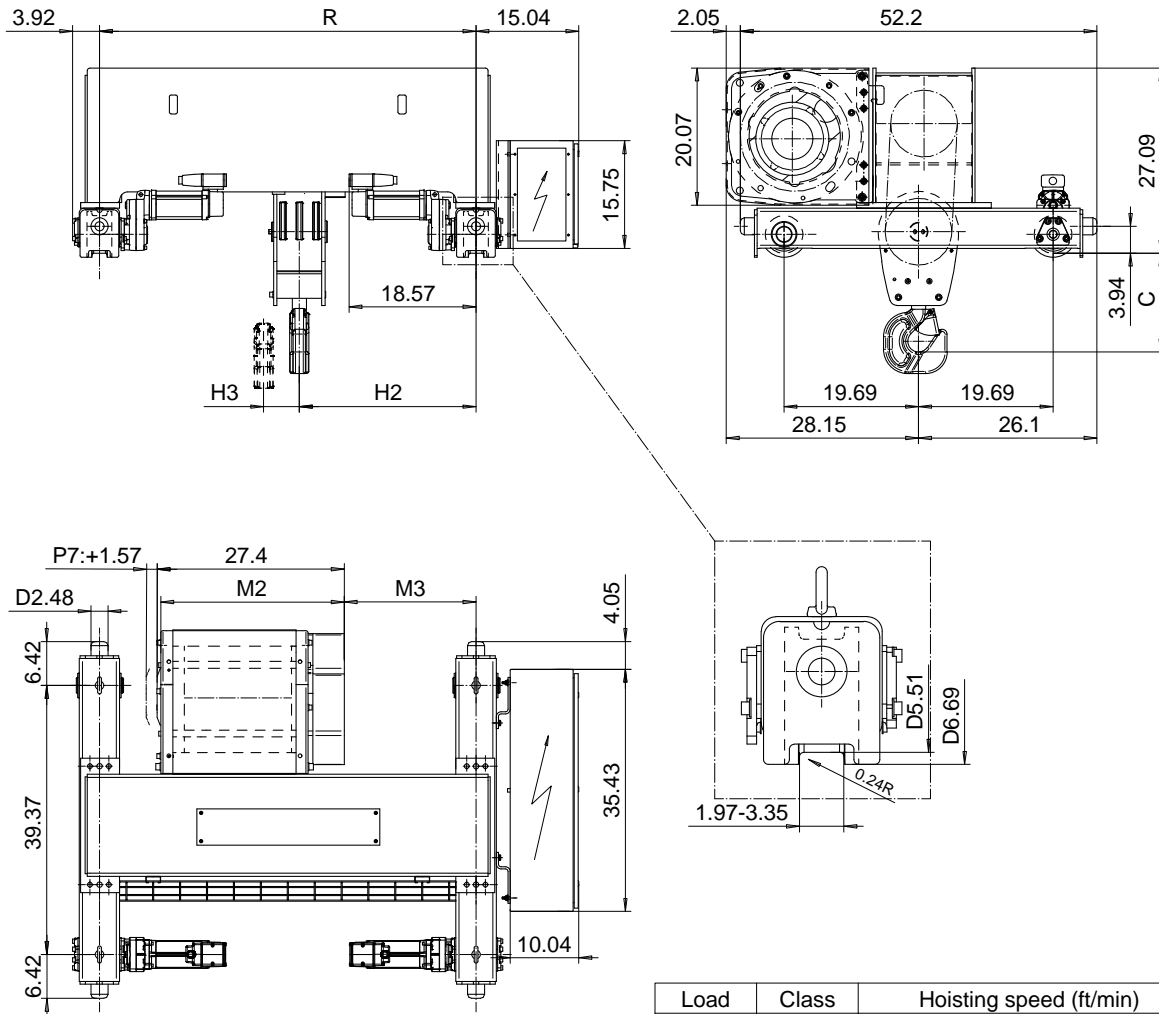


DOUBLE GIRDER, HIGH CONNECTION, 6 PART SINGLE  
 Hoist type:  
 SX5 061...DH

US-60Hz



Load (TON)	Class ASME	Hoisting speed (ft/min)		
		Gear+Motor code:		
		F+P5	H+P6	J+P7
12	H4+	12.5/1.9	20/3.1	25/3.9
15	H4	12.5/1.9	20/3.1	25/3.9
+ weight (lb):		-	60	80

HOL (ft)	Length code	M2 (inch)	M3 (inch)	H2 (inch)	H3 (inch)	C (inch)	min R (ft)	Weight (lb)
19'-8"	D	26.85	15.35	21.92	2.08	14.44	3'-11 1/4"	1650
26'-2"	E	31.57	19.29	25.86	3.07	14.44	4'-7 1/8"	1752
32'-9"	F	37.48	24.40	31.57	3.85	16.41	5'-6 7/8"	1890
42'-7"	G	44.96	30.31	37.48	5.19	16.41	6'-6 3/4"	2040

Note: minR is minimum rail gauge when second brake is supplied  
 Standard rail gauges are 3'-11 1/4", 4'-7 1/8", 5'-6 7/8", 6'-6 3/4", and 94 1/2"

This document is the absolute property of R&M Materials Handling, Inc. This document must not be copied without the written permission of R&M Materials Handling, Inc. The contents thereof must not be disclosed to a third party nor be used for any unauthorized purpose. Contravention will be prosecuted.

ETTATA Design	ETTAV Chd	Appd	Ref Drawing	QC-H-06
2002-10-15 Date	TROLLEY; DOUBLE GIRDER			1 of 12 Folder
SLEQDOCV Owner Dept	HIGH, 6-ROPE FALLS			
R&M MATERIALS HANDLING, INC. HOIST & CRANE PRODUCTS SHELBYVILLE, KY	D002241-A			Issue 5