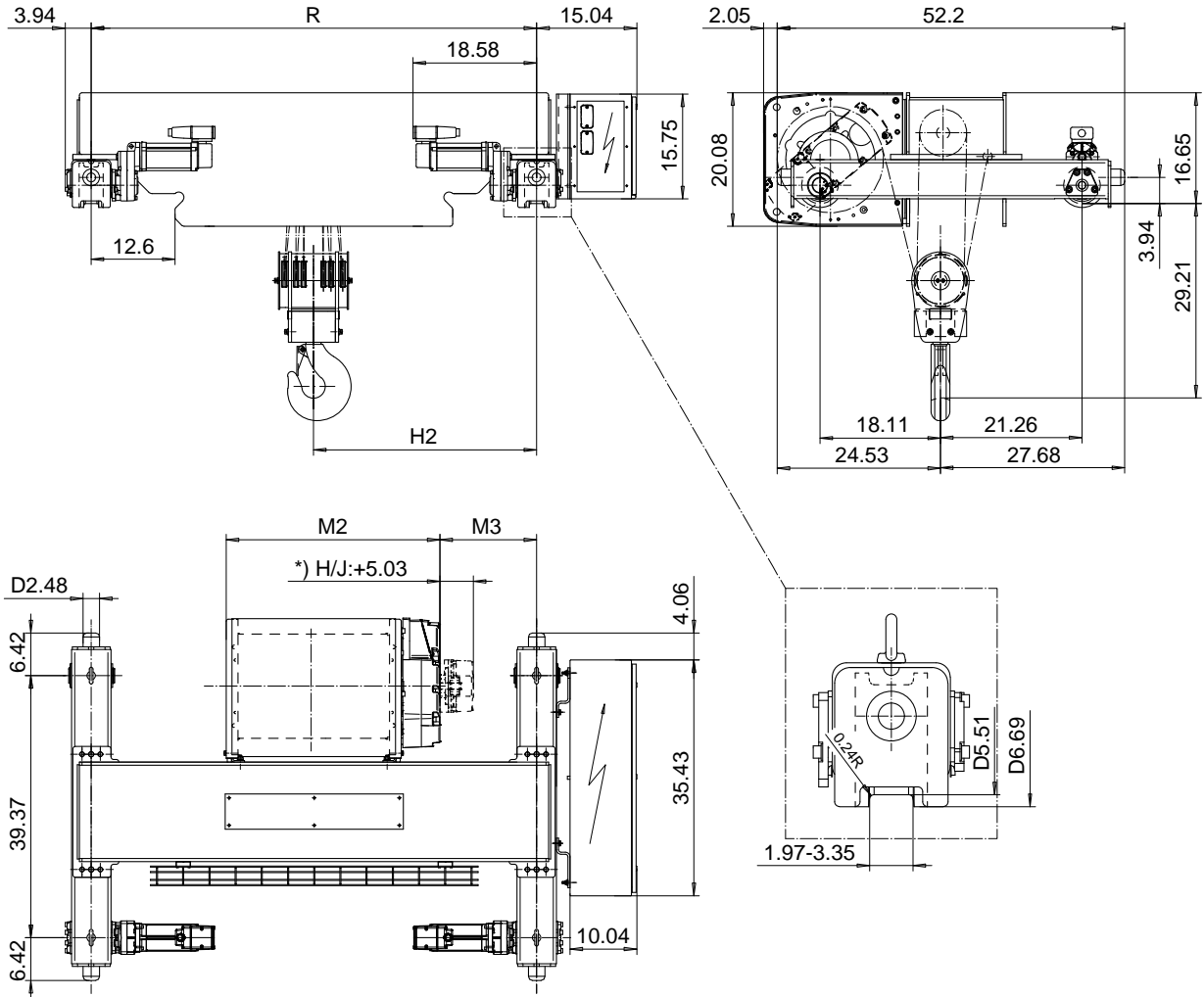


DOUBLE GIRDER, MEDIUM, 6 PART DOUBLE
Hoist type:

US-60Hz

SX5 062...D0



Load (TON)	Class ASME	Hoisting speed (ft/min)		
		Gear+Motor code:		
		F+P5	H+P6	J+P7
12	H4+	12.5/1.9	20/3.1	25/3.9
15	H4	12.5/1.9	20/3.1	25/3.9
+ weight (lb):		-	60	80

HOL (ft)	Length code	M2 (inch)	M3 (inch)	H2 (inch)	min R (ft)	Weight (lb)
13'-1"	E	32.16	8.54	27.75	4'-7 1/8"	1720
19'-8"	F	38.07	11.49	33.54	5'-6 7/8"	1740
26'-2"	G	45.55	7.75	33.66	5'-6 7/8"	1860
36'-1"	H	55.27	10.07	40.66	6'-6 3/4"	1920
49'-2"	J	69.17	10.07	47.55	7'-10 1/2"	2130

Note: minR is minimum rail gauge when second brake is supplied.
Primary brake is mounted on gearcase for drum lengths H and J
Standard rail gauges are 4'-7 1/8", 5'-6 7/8", 6'-6 3/4", and 7'-10 1/2"

This document is the absolute property of R&M Materials Handling, Inc. This document must not be copied without the written permission of R&M Materials Handling, Inc. The contents thereof must not be disclosed to a third party nor be used for any unauthorized purpose. Contravention will be prosecuted.

ETTPAL Design	ETTPAL Chd	Appl	Ref Drawing	QC-M-26
2002-08-30 Date	TROLLEY; DOUBLE GIRDER MEDIUM, 2x6 ROPE FALLS			1 of 12 Folder
SLEQDOCV Owner Dept	R&M R&M MATERIALS HANDLING, INC. HOIST & CRANE PRODUCTS SHEWAN, WATSON & CO.			Drawing 5
D002132-A				

D002132-A_5

QC-M-26