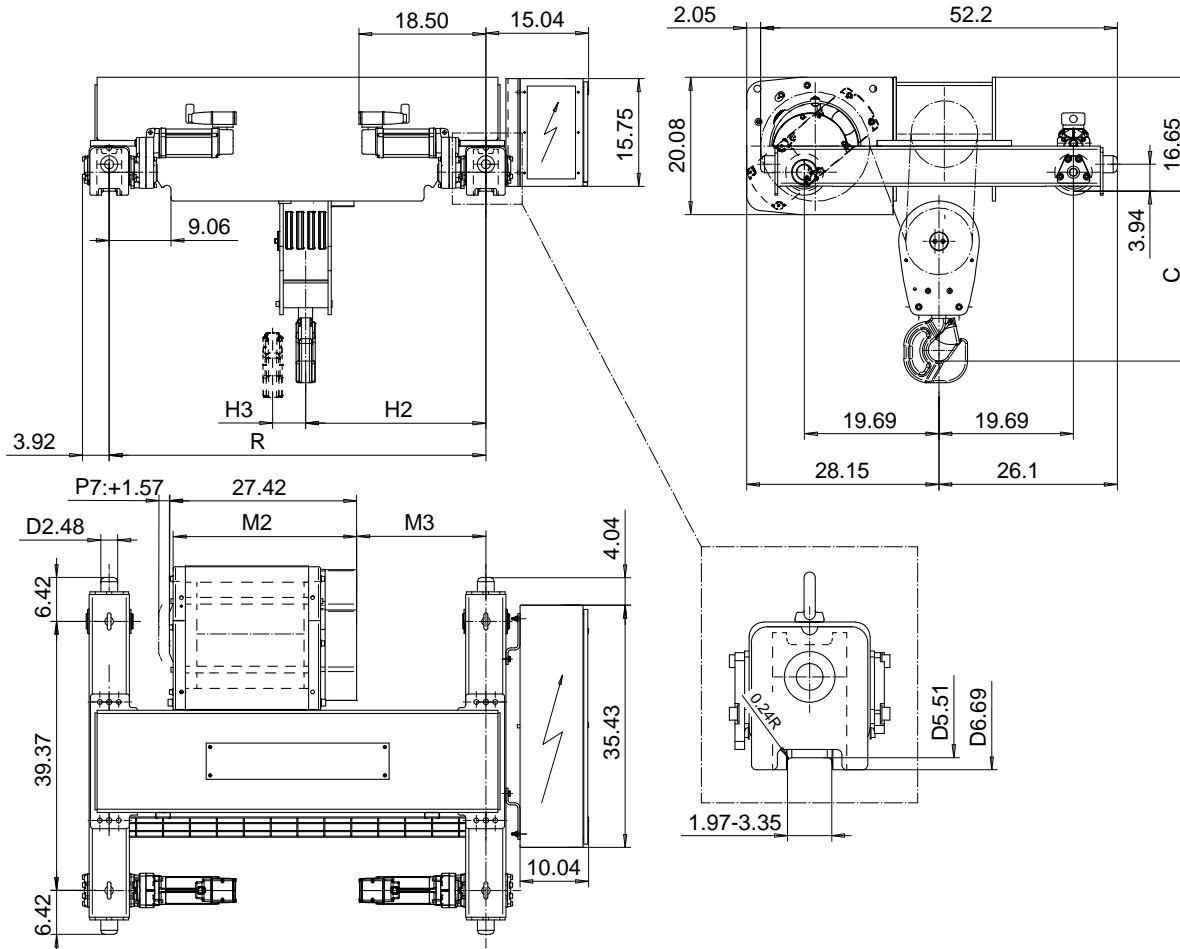


DOUBLE GIRDER, MEDIUM, 8 PART SINGLE

Hoist type:

SX5 081...D0

US-60Hz



Load (TON)	Class ASME	Hoisting speed (ft/min)		
		Gear+Motor code:		
		F+P5	H+P6	J+P7
15	H4	10/1.5	16/2.4	20/3.1
20	H3	10/1.5	16/2.4	20/3.1
+ weight (lb):		-	60	80

HOL (ft)	Length code	M2 (inch)	M3 (inch)	H2 (inch)	H3 (inch)	C (inch)	min R (ft)	Weight (lb)
14'-9"	D	26.85	18.89	26.29	1.73	24.88	4'-7 1/8"	1560
19'-8"	E	31.57	24.80	32.20	2.08	24.88	5'-6 7/8"	1650
26'-2"	F	37.48	30.31	37.32	2.99	26.85	6'-6 3/4"	1720
32'-9"	G	44.96	38.18	45.19	3.85	26.85	7'-10 1/2"	1780

Note: minR is minimum rail gauge when second brake is supplied
Standard rail gauges are 4'-7 1/8", 5'-6 7/8", 6'-6 3/4", and 7'- 10 1/2"

This document is the absolute property of R&M Materials Handling, Inc. This document must not be copied without the written permission of R&M Materials Handling, Inc. The contents thereof must not be disclosed to a third party nor be used for any unauthorized purpose. Contravention will be prosecuted.

ETFPAL Design	ETFPAL Chd	Appd	Ref Drawing	QC-M-08
2002-08-30 Date	TROLLEY; DOUBLE GIRDER			1 of 12 Folder
SLEQDOCV Owner Dept	MEDIUM, 8 ROPE FALLS			
R&M MATERIALS HANDLING, INC. HOIST & CRANE PRODUCTS SHELDONVILLE, OHIO	D002127-A			Issue 5