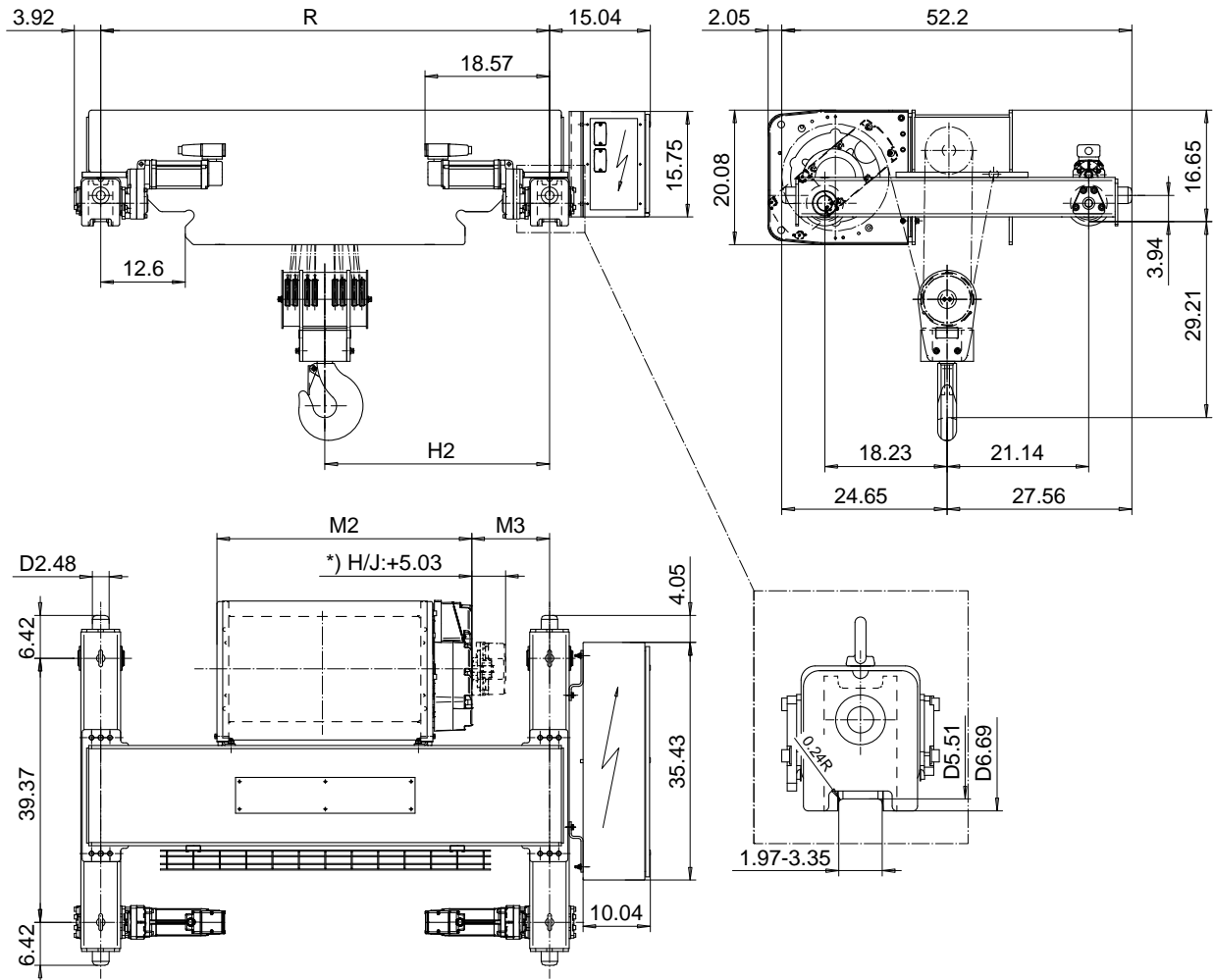


# DOUBLE GIRDER, MEDIUM, 8 PART DOUBLE

Hoist type:

SX5 082...D0

US-60Hz



Load (TON)	Class ASME	Hoisting speed (ft/min)		
		Gear+Motor code:		
		F+P5	H+P6	J+P7
15	H4	10/1.5	16/2.4	20/3.1
20	H3	10/1.5	16/2.4	20/3.1
+ weight (lb):		-	60	80

HOL (ft)	Length code	M2 (inch)	M3 (inch)	H2 (inch)	min R (ft)	Weight (lb)
14'-9"	F	38.07	11.49	33.50	5'-6 7/8"	1780
19'-8"	G	45.55	7.75	33.66	5'-6 7/8"	1900
26'-2"	H	55.39	10.07	40.62	6'-6 3/4"	1960
37'-8"	J	69.17	10.07	47.51	7'-10 1/2"	2170

Note: minR is minimum rail gauge when second brake is supplied.  
 Primary brake is mounted on gearcase for drum lengths H and J  
 Standard rail gauges are 4'-7 1/8", 5'-6 7/8", 6'-6 3/4", and 7'-10 1/2"

This document is the absolute property of R&M Materials Handling, Inc. This document must not be copied without the written permission of R&M Materials Handling, Inc. The contents thereof must not be disclosed to a third party nor be used for any unauthorized purpose. Contravention will be prosecuted.

ETTPAL Design	ETTPAL Chd	Appd	Ref Drawing	QC-M-28
2002-08-30 Date	TROLLEY; DOUBLE GIRDER			1 of 12 Folder
SLEQDOCV Owner Dept	MEDIUM, 2X8 ROPE FALLS			
R&M MATERIALS HANDLING, INC. HOIST & CRANE PRODUCTS SHEPHERD, OHIO	D002136-A			Issue 4