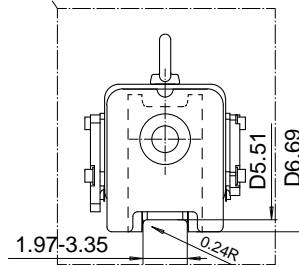
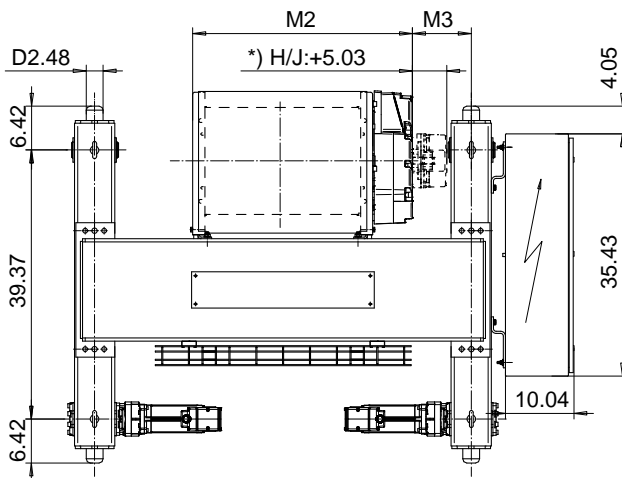
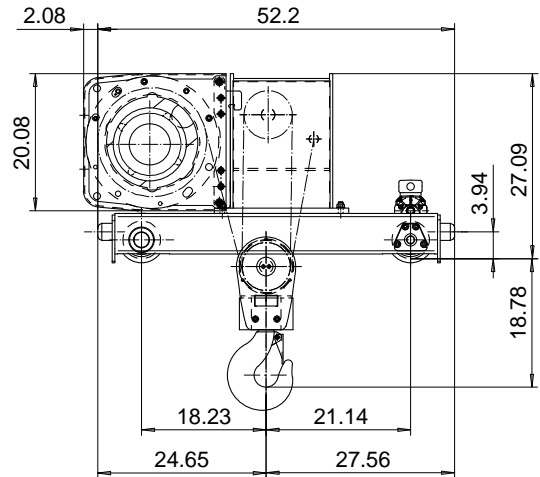
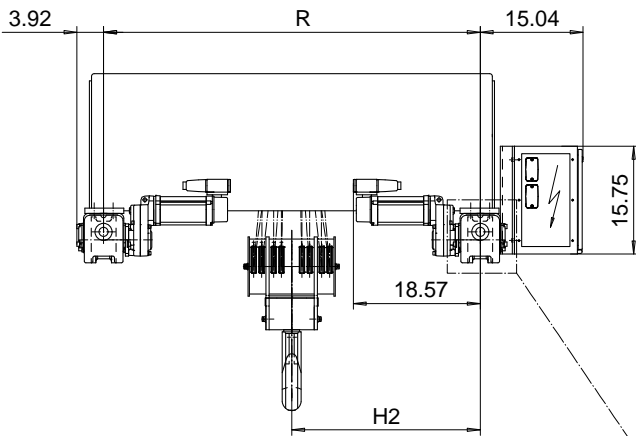


DOUBLE GIRDER, HIGH CONNECTION, 8 PART DOUBLE
 Hoist type:
 SX5 082...DH

US-60Hz



Load (TON)	Class ASME	Hoisting speed (ft/min)		
		Gear+Motor code:		
		F+P5	H+P6	J+P7
15	H4	10/1.5	16/2.4	20/3.1
20	H3	10/1.5	16/2.4	20/3.1
+ weight (lb):		-	60	80

HOL (ft)	Length code	M2 (inch)	M3 (inch)	H2 (inch)	min R (ft)	Weight (lb)
14'-9"	F	38.07	5.62	27.75	4'-7 1/8"	1880
19'-8"	G	45.55	7.75	33.66	5'-6 7/8"	2040
26'-2"	H	55.39	4.13	33.66	5'-6 7/8"	2130
37'-8"	J	69.17	10.07	47.67	7'-10 1/2"	2460

Note: minR is minimum rail gauge when second brake is supplied
 Standard rail gauges are 3'-11 1/4", 4'-7 1/8", 5'-6 7/8", 6'-6 3/4",
 and 7'-10 1/2".

The brake is mounted to the gearcase on drum lengths H and J

This document is the absolute property of R&M Materials Handling, Inc. This document must not be copied
 without the written permission of R&M Materials Handling, Inc.
 The contents thereof must not be disclosed to a third party nor be used for any unauthorized
 purpose. Contravention will be prosecuted.

ETTATA Design 2002-10-17 Date	ETTAV Chd Appd	Ref Drawing	QC-H-28
SLEQDOCV Owner Dept	TROLLEY; DOUBLE GIRDER HIGH, 2X8 ROPE FALLS		1 of 12 Folder
R&M R&M MATERIALS HANDLING, INC. HOIST & CRANE PRODUCTS SHELTON, CT 06484	D002246-A		Issue 4