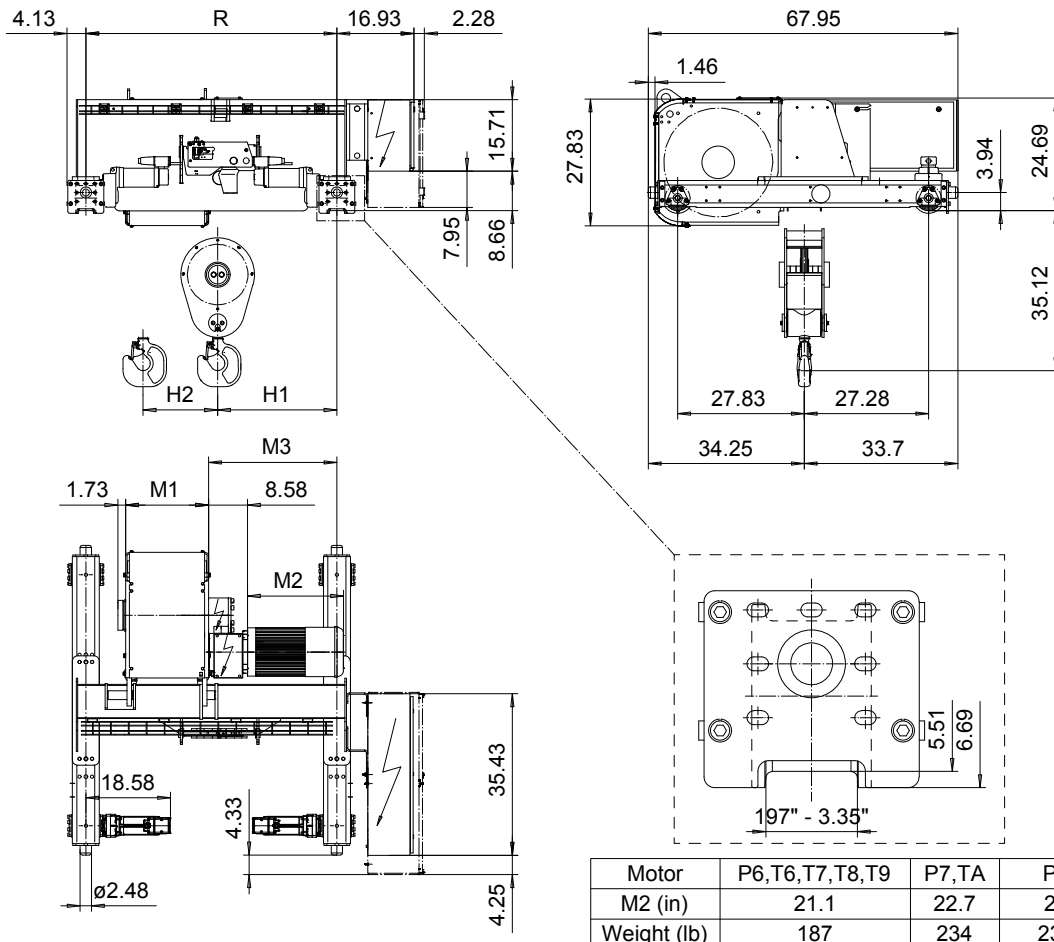


DOUBLE GIRDER, MEDIUM, 2 PART SINGLE
Hoist type:
SX6 021...D0

US-60Hz



Motor	P6,T6,T7,T8,T9	P7,TA	P8
M2 (in)	21.1	22.7	28
Weight (lb)	187	234	234

HOL (ft)	Length code	M1 (inch)	M3 (inch)	H1 (inch)	H2 (inch)	min R...max R (ft)	Weight* (lb)
50'-10"	C	18.18	28.19	26.18	5.47	4'-7 1/8"	2955
68'-10"	D	22.12	31.54	29.53	7.40	5'-6 7/8"	2955
91'-10"	E	26.85	31.54	29.53	9.88	5'-6 7/8" ...6'-6 3/4"	3043
118'-1"	F	32.75	37.44	37.40	12.67	6'-6 3/4" ...7'-10 1/2"	3241
154'-2"	G	40.23	45.31	43.31	16.57	7'-10 1/2" ...10'-2"	3484
200'-1"	H	50.07	57.91	55.91	21.49	10'-2" ...12'-5 5/8"	3925
264'-1"	J	63.85	61.46	59.45	28.38	11'-1 7/8" ...13'-9 3/8"	4366
318'-2"	K	75.66	76.61	74.61	34.17	13'-9 3/8"	4917

Load (TON)	Class ASME	Hoisting motor				
		Hoisting speed (ft/min): Gear code				
		30/4.9: E	40/6.7: F	50/7.8: G	60: H	80: J
6	H4+	P6,T6	P6,T6	P7,T7	T8	T9
7 1/2	H4	P6,T6	P6,T6	P7,T7	T8	T9
10	H3	P6,T6	P7,T7	P8,T8	T9	TA

*Weight calculated with P6 motor.

Note: minR is minimum rail gauge when service platform is supplied.
 Standard rail gauges are 4'-7 1/8", 5'-6 7/8", 6'-6 3/4", 7'-10 1/2", 8'-10 5/16", 10'-2", 11'-1 7/8", 12'-5 5/8" and 13'-9 3/8".
 H2, M3 and weight are calculated at the minR

This document is the absolute property of R&M Materials Handling, Inc. This document must not be copied without the written permission of R&M Materials Handling, Inc. The contents thereof must not be disclosed to a third party nor be used for any unauthorized purpose. Contravention will be prosecuted.

ETFPAL Design	ETFPAL Chd	Appd	Ref Drawing	QD-M-02
2002-09-02 Date	TROLLEY; DOUBLE GIRDER			1 of 18 Folder
SLEQDCV Owner Dept	MEDIUM, 2 ROPE FALLS			
R&M MATERIALS HANDLING, INC. TROLLEY & CRANE PRODUCTS	D006647-A			Issue 0