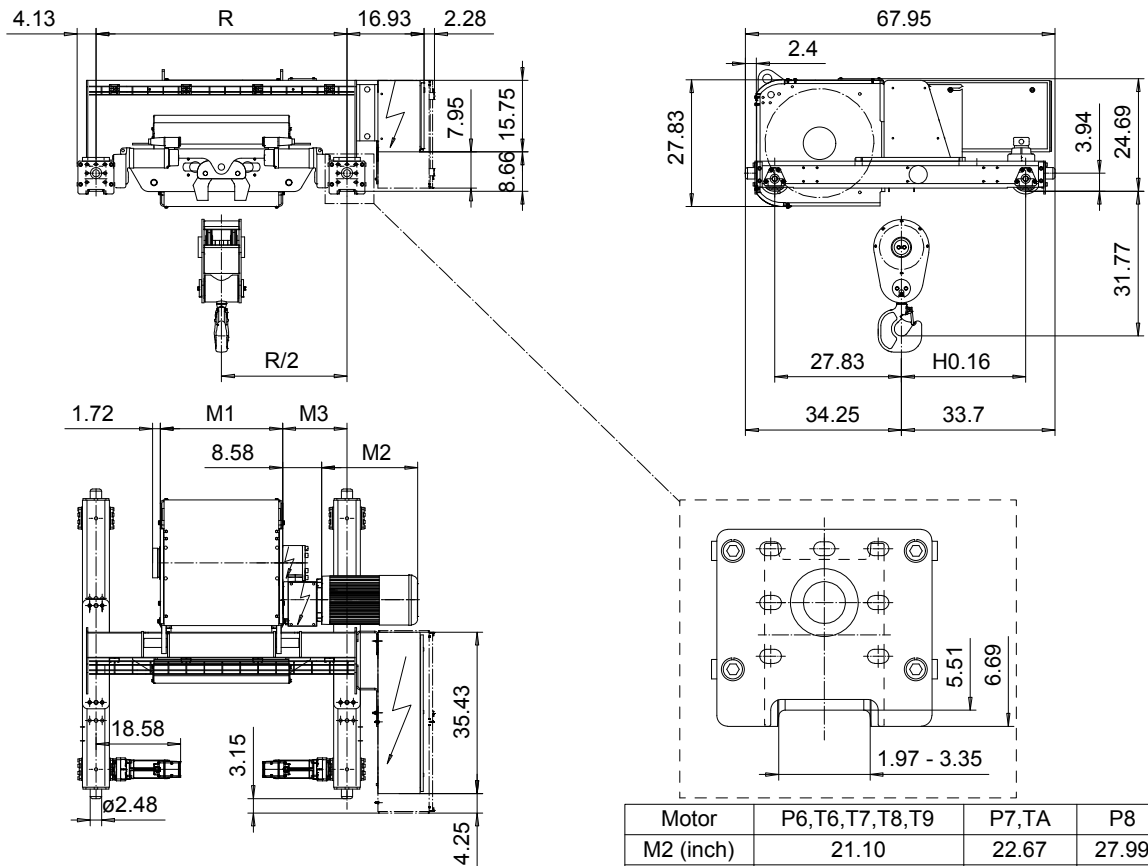


DOUBLE GIRDER, MEDIUM, 2 PART DOUBLE

Hoist type:

SX6 022...D0

US-60Hz



Motor	P6,T6,T7,T8,T9	P7,TA	P8
M2 (inch)	21.10	22.67	27.99
Weight (lb)	187	234	234

HOL (ft)	Length code	M1 (inch)	M3 (inch)	min R...max R (ft)	Weight* (lb)
54'-2"	E	26.85	14.13	4'-7 1/8"	2778
72'-2"	F	32.75	17.08	5'-6 7/8"...7'-10 1/2"	2977
96'-9"	G	40.23	13.34	5'-6 7/8"...6'-6 3/4"	3109
127'-11"	H	50.07	14.33	6'-6 3/4"...7'-10 1/2"	3352
170'-7"	J	63.85	15.31	7'-10 1/2"...8'-10 5/16"	3704
208'-4"	K	75.66	15.31	8'-10 5/16"...10'-2"	4079
252'-7"	L	89.44	16.29	10'-2"...11'-1 7/8"	4608
283'-10"	M	99.29	17.28	11'-1 7/8"...12'-5 5/8"	4939
321'-6"	N	111.10	19.25	12'-5 5/8"...13'-9 3/8"	5358

Load (TON)	Class ASME	Hoisting motor				
		Hoisting speed (ft/min): Gear code				
		30/4.9: E	40/6.7: F	50/7.8: G	60: H	80: J
6	H4+	P6,T6	P6,T6	P7,T7	T8	T9
7 1/2	H4	P6,T6	P6,T6	P7,T7	T8	T9
10	H3	P6,T6	P7,T7	P8,T8	T9	TA

\*Weight calculated with P6 motor.

Note: minR is minimum rail gauge when service platform is supplied.

Standard rail gauges are 4'-7 1/8", 5'-6 7/8", 6'-6 3/4", 7'-10 1/2",

8'-10 5/16", 10'-2", 11'-1 7/8", 12'-5 5/8" and 13'-9 3/8".

M3 and weight are calculated at the minR

This document is the absolute property of R&M Materials Handling, Inc. This document must not be copied without the written permission of R&M Materials Handling, Inc. The contents thereof must not be disclosed to a third party nor be used for any unauthorized purpose. Contravention will be prosecuted.

ETFPAL Design	ETFPAL Chd	Appd	Ref Drawing	QD-M-22
2002-09-03 Date	TROLLEY; DOUBLE GIRDER			1 of 18 Folder
SLEQDCV Owner Dept	MEDIUM, 2X2 ROPE FALLS			
R&M	R&M MATERIALS HANDLING, INC. TROLLEY & CRANE PRODUCTS SHEPPARD AVENUE CLEVELAND, OHIO			Issue 0
D006651-A				