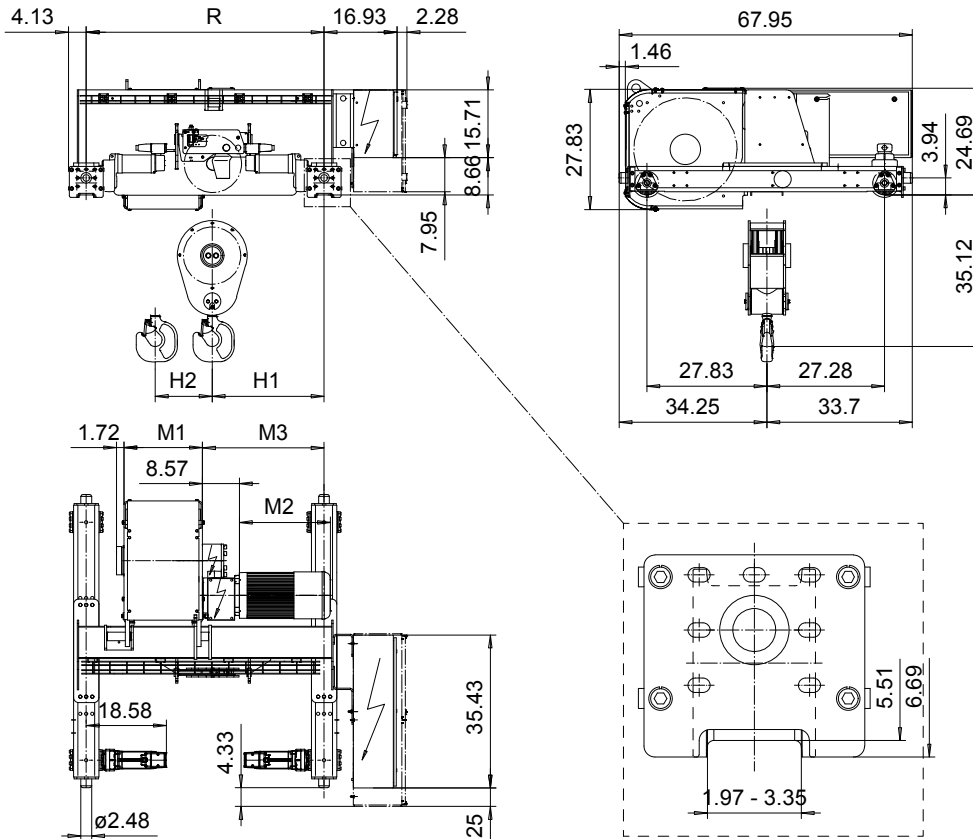


DOUBLE GIRDER, MEDIUM, 4 PART SINGLE
Hoist type:
SX6 041...D0

US-60Hz



Motor	P6,T6,T7,T8,T9	P7,TA	P8
M2 (inch)	21.10	22.67	27.99
Weight (lb)	187	234	234

HOL	Length	M1	M3	H1	H2	min R...max R	Weight*
(ft)	code	(inch)	(inch)	(inch)	(inch)	(ft)	(lb)
24'-6"	C	18.18	28.19	25.94	2.71	4'-7 1/8"	3380
34'-5"	D	22.12	31.54	29.29	3.70	5'-6 7/8"	3580
45'-11"	E	26.85	31.54	29.29	4.92	5'-6 7/8" ...6'-6 3/4"	3700
59'-0"	F	32.75	37.44	35.20	6.33	6'-6 3/4" ...8'-10 5/16"	3900
77'-1"	G	40.23	45.31	43.07	8.26	7'-10 1/2" ...10'-2"	4220
100'-0"	H	50.07	57.91	55.67	10.74	10'-2" ...12'-5 5/8"	4600
131'-2"	J	63.85	63.86	59.21	14.17	11'-1 7/8" ...13'-9 3/8"	5220
159'-1"	K	75.66	76.61	74.37	17.08	13'-9 3/8"	5920

Load (TON)	Class ASME	Hoisting motor				
		Hoisting speed (ft/min): Gear code				
		16/2.4: E	20/3.1: F	25/3.9: G	30: H	40: J
12 1/2	H4+	P6,T6	P6,T6	P7,T7	T8	T9
15	H4	P6,T6	P6,T6	P7,T7	T8	T9
20	H3	P6,T6	P7,T7	P8,T8	T9	TA

*Weight calculated with P6 motor.

Note: minR is minimum rail gauge when service platform is supplied.

Standard rail gauges are 4'-7 1/8", 5'-6 7/8", 6'-6 3/4", 7'-10 1/2",

8'-10 5/16", 10'-2", 11'-1 7/8", 12'-5 5/8" and 13'-9 3/8".

H2, M3 and weight are calculated at the minR

This document is the absolute property of R&M Materials Handling, Inc. This document must not be copied without the written permission of R&M Materials Handling, Inc. The contents thereof must not be disclosed to a third party nor be used for any unauthorized purpose. Contravention will be prosecuted.

ETTFAL Design	ETTFAL Chd	Appd	Ref Drawing	QD-M-04
2002-09-02 Date	TROLLEY; DOUBLE GIRDER			1 of 19 Folder
SLEQDCV Owner Dept	MEDIUM, 4 ROPE FALLS			
R&M	D006648-A			Issue 0