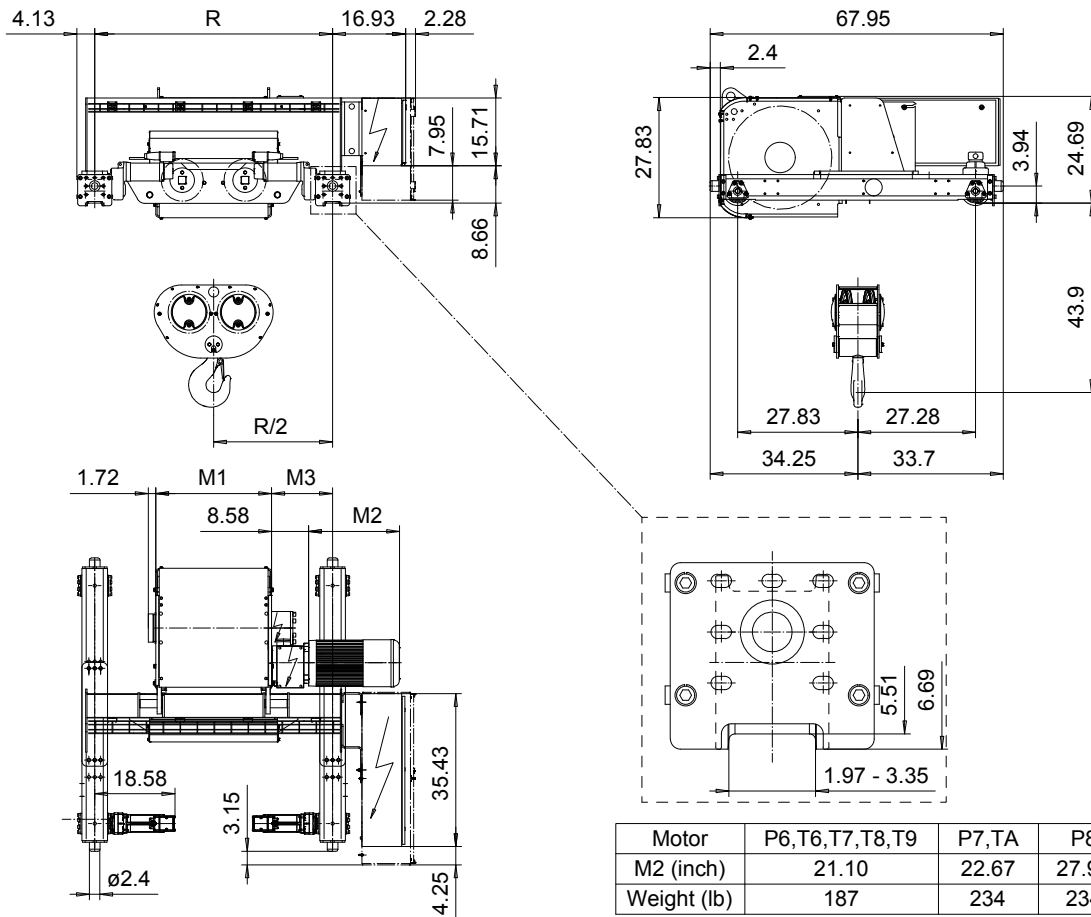


DOUBLE GIRDER, MEDIUM, 4 PART DOUBLE
Hoist type:
SX6 042...D0

US-60Hz



Motor	P6, T6, T7, T8, T9	P7, TA	P8
M2 (inch)	21.10	22.67	27.99
Weight (lb)	187	234	234

HOL (ft)	Length code	M1 (inch)	M3 (inch)	min R...max R (ft)	Weight* (lb)
26'-3"	E	26.85	14.13	4'-7 1/8"	2977
36'-1"	F	32.75	17.08	5'-6 7/8"	3175
47'-7"	G	40.23	13.34	5'-6 7/8"...6'-6 3/4"	3330
64'-0"	H	50.07	14.33	6'-6 3/4"...7'-10 1/2"	3572
85'-4"	J	63.85	15.31	7'-10 1/2"...8'-10 5/16"	3903
103'-4"	K	75.66	15.31	8'-10 5/16"...10'-2"	4300
126'-4"	L	89.44	16.29	10'-2"...11'-1 7/8"	4829
141'-1"	M	99.29	17.28	11'-1 7/8"...12'-2 5/8"	5160
160'-9"	N	111.10	19.25	12'-2 5/8"...13'-9 3/8"	5557

Load (TON)	Class ASME	Hoisting motor				
		Hoisting speed (ft/min): Gear code				
		16/2.4: E	20/3.1: F	25/3.9: G	30: H	40: J
12 1/2	H4+	P6, T6	P6, T6	P7, T7	T8	T9
15	H4	P6, T6	P6, T6	P7, T7	T8	T9
20	H3	P6, T6	P7, T7	P8, T8	T9	TA

*Weight calculated with P6 motor.

Note: minR is minimum rail gauge when service platform is supplied.

Standard rail gauges are 4'-7 1/8", 5'-6 7/8", 6'-6 3/4", 7'-10 1/2", 8'-10 5/16", 10'-2", 11'-1 7/8", 12'-5 5/8" and 13'-9 3/8".

M3 and weight are calculated at the minR

This document is the absolute property of R&M Materials Handling, Inc. This document must not be copied without the written permission of R&M Materials Handling, Inc. The contents thereof must not be disclosed to a third party nor be used for any unauthorized purpose. Contravention will be prosecuted.

ETFPAL	ETFPAL	Appd	Ref Drawing	QD-M-24
Design	2002-09-03	Date	TROLLEY; DOUBLE GIRDER	
SLEQDCV	Owner Dept	MEDIUM, 2X4 ROPE FALLS		1 of 19
R&M	R&M MATERIALS HANDLING, INC.	HOIST & CRANE PRODUCTS		Issue
		D006652-A		0