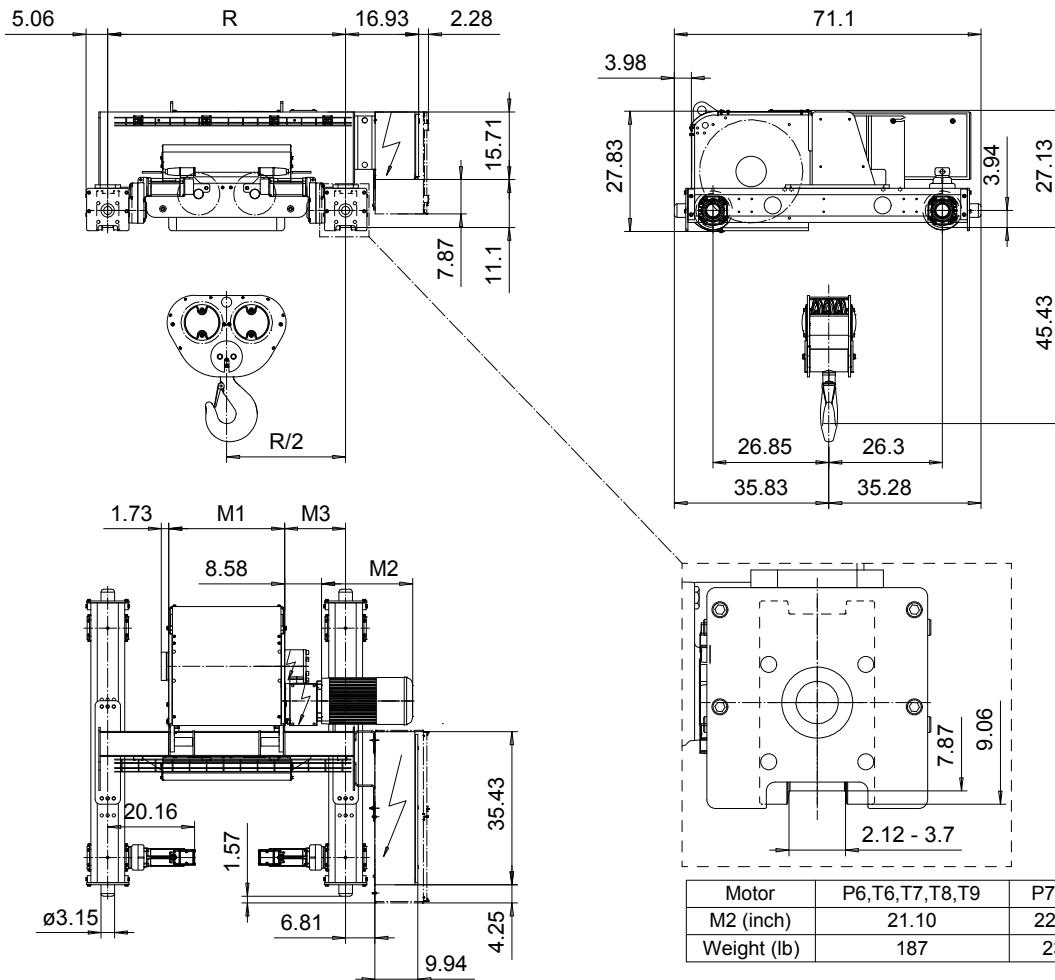


DOUBLE GIRDER, MEDIUM, 6 PART DOUBLE
Hoist type:
SX6 062...D0

US-60Hz



Motor	P6,T6,T7,T8,T9	P7,TA	P8
M2 (inch)	21.10	22.67	27.99
Weight (lb)	187	234	234

HOL	Length	M1	M3	min R...max R	Weight*
(ft)	code	(inch)	(inch)	(ft)	(lb)
18'-1"	E	26.85	14.13	4'-7 1/8"	3528
23'-0"	F	32.75	17.08	5'-6 7/8"	3726
31'-2"	G	40.23	13.34	5'-6 7/8"...6'-6 3/4"	3859
42'-8"	H	50.07	14.33	6'-6 3/4"...7'-10 1/2"	4123
55'-9"	J	63.85	15.31	7'-10 1/2"...8'-10 5/16"	4564
68'-11"	K	75.66	15.31	8'-10 5/16"...10'-2"	4983
83'-8"	L	89.44	16.29	10'-2"...11'-1 7/8"	5535
93'-6"	M	99.29	17.28	11'-1 7/8"...12'-5 5/8"	5887
106'-8"	N	111.10	19.25	12'-5 5/8"...13'-9 3/8"	6350

*Weight calculated with P6 motor.

Load (TON)	Class ASME	Hoisting motor				
		Hoisting speed (ft/min): Gear code				
		10/1.5: E	12.5/1.9: F	16/2.4: G	20: H	25: J
20	H4+	P6,T6	P6,T6	P7,T7	T8	T9
25	H4	P6,T6	P6,T6	P7,T7	T8	T9
30	H3	P6,T6	P7,T7	P8,T8	T9	TA

Note: minR is minimum rail gauge when service platform is supplied.

Standard rail gauges are 4'-7 1/8", 5'-6 7/8", 6'-6 3/4", 7'-10 1/2",

8'-10 5/16", 10'-2", 11'-1 7/8", 12'-5 5/8" and 13'-9 3/8".

M3 and weight are calculated at the minR

This document is the absolute property of R&M Materials Handling, Inc. This document must not be copied without the written permission of R&M Materials Handling, Inc. The contents thereof must not be disclosed to a third party nor be used for any unauthorized purpose. Contravention will be prosecuted.

ETTFAL Design	ETTFAL Chd	Appd	Ref Drawing	QD-M-26
2002-09-03 Date	TROLLEY; DOUBLE GIRDER			1 of 19
SLEQDCV Owner Dept	MEDIUM, 2x6 ROPE FALLS			Folder
R&M MATERIALS HANDLING, INC. HOIST & CRANE PRODUCTS SHEWAN-WATSON	D006653-A			Issue 0