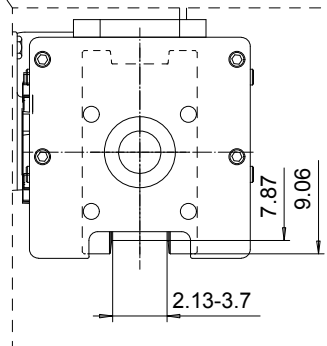
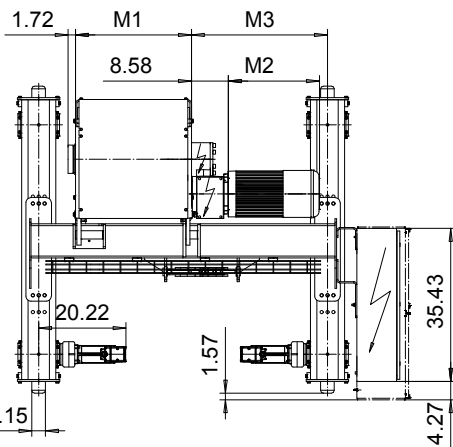
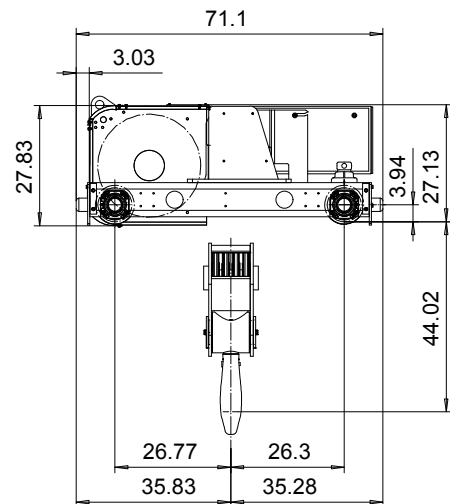
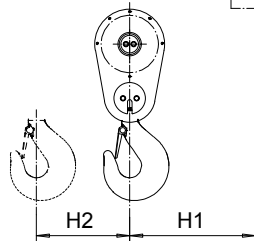
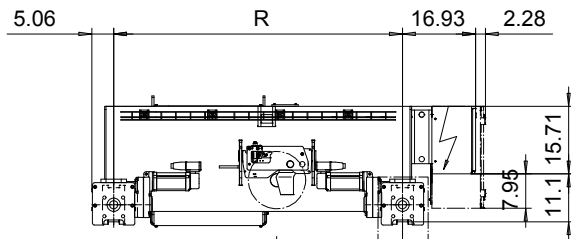


DOUBLE GIRDER, MEDIUM, 8 PART SINGLE

Hoist type:

SX6 081...D0

US-60Hz



Motor	P6, T6, T7, T8, T9	P7, TA	P8
M2 (inch)	21.10	22.67	27.99
Weight (lb)	187	234	234

HOL (ft)	Length code	M1 (inch)	M3 (inch)	H1 (inch)	H2 (inch)	min R...max R (ft)	Weight* (lb)
22'-11"	E	26.85	31.54	29.13	2.48	5'-6 7/8" ... 6'-6 3/4"	3969
29'-6"	F	32.75	37.44	35.04	3.18	6'-6 3/4" ... 8'-10 5/16"	4190
37'-8"	G	40.23	45.31	42.91	4.13	7'-10 1/2" ... 10'-2"	4520
49'-2"	H	50.07	57.91	55.51	5.39	10'-2" ... 12'-5 5/8"	5072
65'-7"	J	63.85	61.46	59.06	7.08	11'-1 7/8" ... 13'-9 3/8"	5733
78'-8"	K	75.66	76.61	74.21	8.54	13'-9 3/8"	6615

*Weight calculated with P6 motor.

Load (TON)	Class ASME	Hoisting motor					
		Hoisting speed (ft/min): Gear code					
		8/1.2: E	10/1.5: F	12.5/1.9: G	12.5: G	16: H	20: J
30	H4	P6, T6	P7, T7		T8	T9	TA
40	H3	P6, T6	P7, T7	P8, T8		T9	TA

Note: minR is minimum rail gauge when service platform is supplied.

Standard rail gauges are 4'-7 1/8", 5'-6 7/8", 6'-6 3/4", 7'-10 1/2",

8'-10 5/16", 10'-2", 11'-1 7/8", 12'-5 5/8" and 13'-9 3/8".

H2, M3 and weight are calculated at the minR

This document is the absolute property of R&M Materials Handling, Inc. This document must not be copied without the written permission of R&M Materials Handling, Inc. The contents thereof must not be disclosed to a third party nor be used for any unauthorized purpose. Contravention will be prosecuted.

ETFPAL	ETFPAL	Appd	Ref Drawing	QD-M-08
Design	2002-09-02	TROLLEY; DOUBLE GIRDER		
Date		MEDIUM, 8 ROPE FALLS		
SLEQDCV	Owner Dept	D006650-A		
R&M	R&M MATERIALS HANDLING, INC. HOIST & CRANE PRODUCTS SHERBOURNE, ONT.	Issue 0		