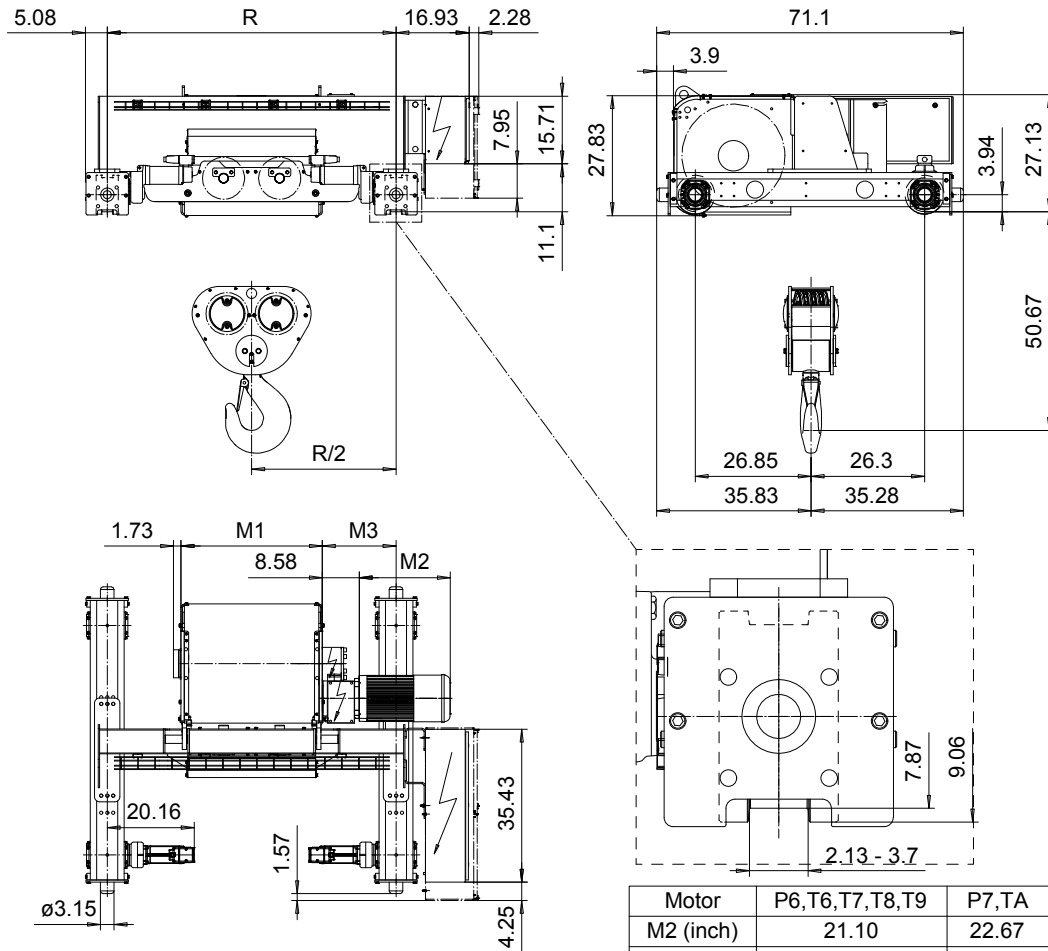


DOUBLE GIRDER, MEDIUM, 8 PART DOUBLE
Hoist type:
SX6 082...D0

US-60Hz



Motor	P6, T6, T7, T8, T9	P7, TA	P8
M2 (inch)	21.10	22.67	27.99
Weight (lb)	187	234	234

HOL (ft)	Length code	M1 (inch)	M3 (inch)	min R...max R (ft)	Weight* (lb)
18'-1"	F	32.75	17.08	5'-6 7/8"	3969
23'-0"	G	40.23	19.25	5'-6 7/8" ... 6'-6 3/4"	4123
31'-2"	H	50.07	14.33	6'-6 3/4"...7'-10 1/2"	4410
42'-8"	J	63.85	15.31	7'-10 1/2"...8'-10 5/16"	4829
50'-10"	K	75.66	15.31	8'-10 5/16"...10'-2"	5270
62'-4"	L	89.44	16.29	10'-2"...11'-1 7/8"	5799
70'-6"	M	99.29	17.28	11'-1 7/8"...12'-5 5/8"	6174
80'-5"	N	111.10	19.25	12'-5 5/8"...13'-9 3/8"	6637

*Weight calculated with P6 motor.

Load (TON)	Class ASME	Hoisting motor					
		Hoisting speed (ft/min): Gear code					
		8/1.2: E	10/1.5: F	12.5/1.9: G	12.5: G	16: H	20: J
30	H4	P6, T6	P7, T7	----	T8	T9	TA
40	H3	P6, T6	P7, T7	P8	T8	T9	TA

Note: minR is minimum rail gauge when service platform is supplied.

Standard rail gauges are 4'-7 1/8", 5'-6 7/8", 6'-6 3/4", 7'-10 1/2",

8'-10 5/16", 10'-2", 11'-1 7/8", 12'-5 5/8" and 13'-9 3/8".

M3 and weight are calculated at the minR

This document is the absolute property of R&M Materials Handling, Inc. This document must not be copied without the written permission of R&M Materials Handling, Inc. The contents thereof must not be disclosed to a third party nor be used for any unauthorized purpose. Contravention will be prosecuted.

ETTFAL Design	ETTFAL Chd	Appd	Ref Drawing	QD-M-28
2002-09-03 Date	TROLLEY; DOUBLE GIRDER			1 of 19 Folder
SLEQDCV Owner Dept	MEDIUM, 2X8 ROPE FALLS			
R&M MATERIALS HANDLING, INC. TROLLEY & CRANE PRODUCTS SHEPHERDVILLE, OHIO	D006654-A			Issue 0