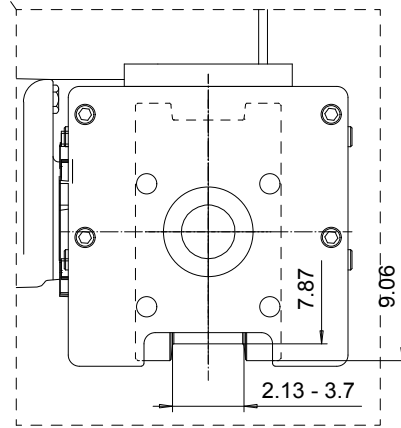
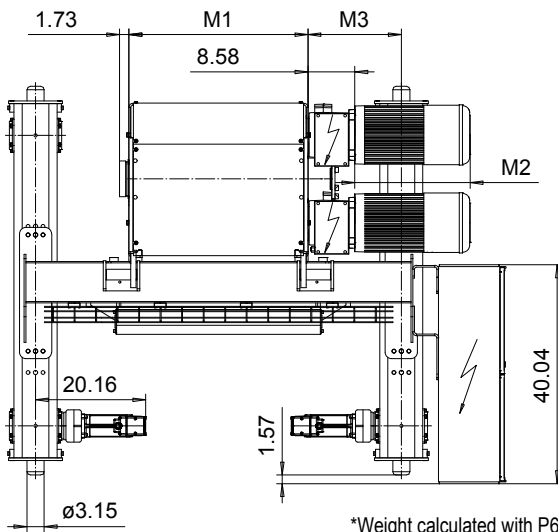
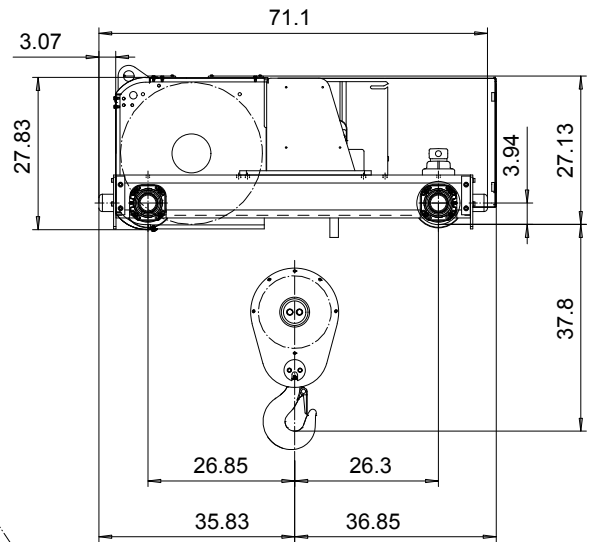
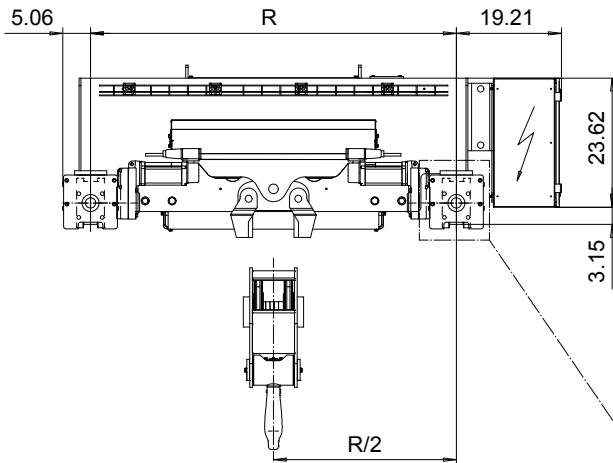


**DOUBLE GIRDER, MEDIUM, 2 PART DOUBLE**  
**Hoist type:**  
**SX7 022...D0**

**US-60Hz**



\*Weight calculated with P6 motor.

Motor	P6,T6,T7, T9	P7
M2 (inch)	21.10	22.67
Weight (lb)	187	234

Load (TON)	Class ASME	Hoisting motor					
		Hoisting speed (ft/min): Gear code					
		31.5/4.6: E	39.2/6.2: F	49.2/7.9: G	63: H	78.7: J	
12 1/2	H4+	P6,T6	P6,T6	P7,T7	T8	T9	
15	H4	P6,T6	P6,T6	P7,T7	T8	T9	
20	H3	P6,T6	P7,T7	T8	T9	-	

HOL (ft)	Length code	M1 (inch)	M3 (inch)	min R...max R (ft)	Weight* (lb)
50'-10"	F	32.75	17.08	5'-6 7/8"	3484
67'-6"	G	40.23	13.34	5'-6 7/8"...6'-6 3/4"	3793
90'-2"	H	50.07	14.33	6'-6 3/4"...7'-10 1/2"	4057
123'-0"	J	63.85	15.31	7'-10 1/2"...8'-10 5/16"	4542
150'-11"	K	75.66	15.31	8'-10 5/16"...10'-2"	4939
182'-1"	L	89.44	16.29	10'-2"...11'-1 7/8"	5424
205'-0"	M	99.29	17.28	11'-1 7/8"...12'-5 5/8"	5755
232'-11"	N	111.10	19.25	12'-5 5/8"...13'-9 3/8"	6196

Note: minR is minimum rail gauge when service platform is supplied.

Standard rail gauges are 4'-7 1/8", 5'-6 7/8", 6'-6 3/4", 7'-10 1/2", 8'-10 5/16", 10'-2", 11'-1 7/8", 12'-5 5/8" and 13'-9 3/8".

M3 and weight are calculated at the minR

This document is the absolute property of R&M Materials Handling, Inc. This document must not be copied without the written permission of R&M Materials Handling, Inc. The contents thereof must not be disclosed to a third party nor be used for any unauthorized purpose. Contravention will be prosecuted.

ETPAL Design	ETPAL Chd	Appd	Ref Drawing	QE-M-22
2003-01-13				
SLEQDCV Date	TROLLEY; DOUBLE GIRDER			1 of 15
Owner Dept	MEDIUM, 2X2 ROPE FALLS			Folder
R&M	D006655-A			Issue
				0