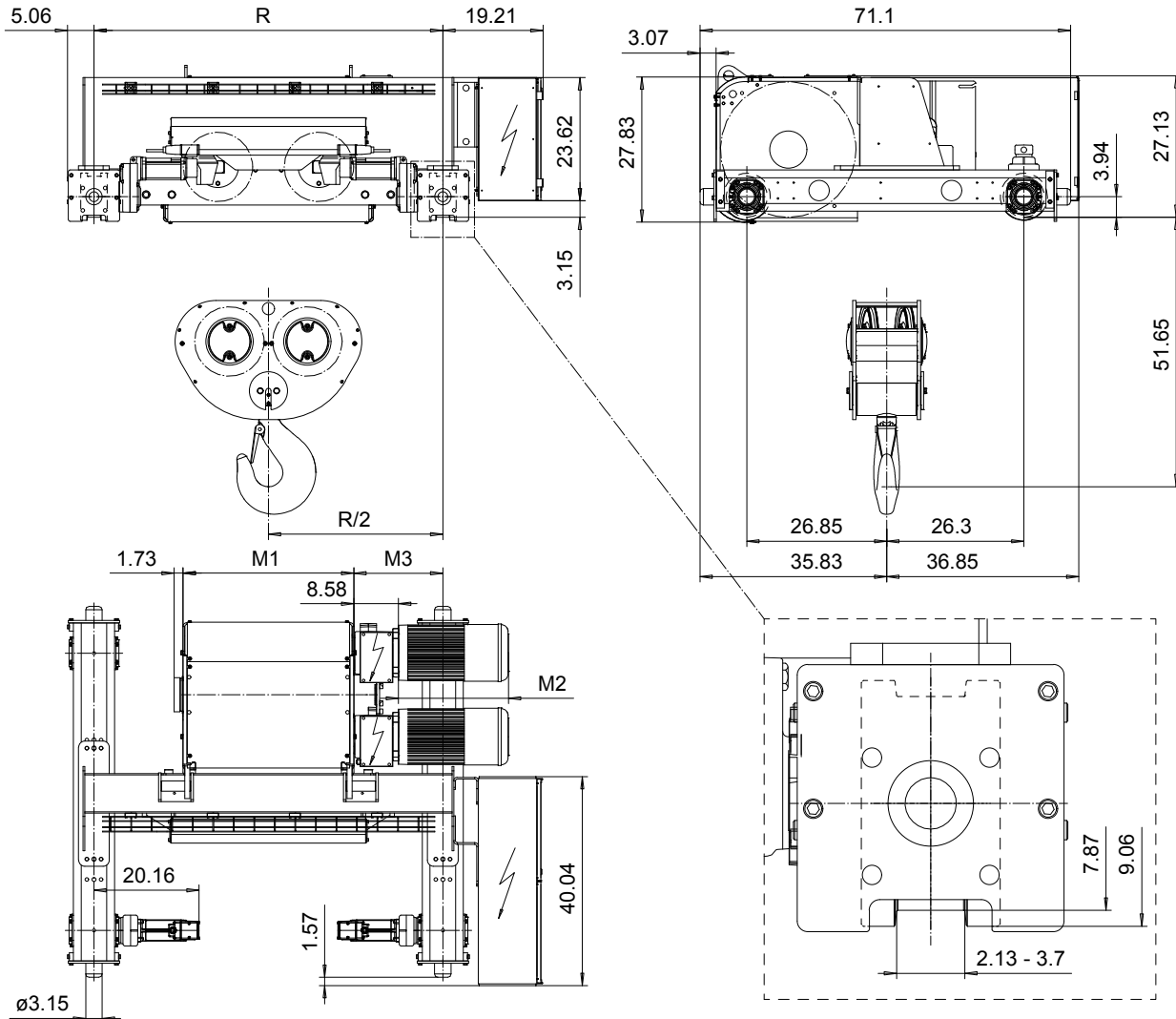


DOUBLE GIRDER, MEDIUM, 4 PART DOUBLE
Hoist type:
SX7 042...D0

US-60Hz



Motor	P6,T6,T7, T9	P7
M2 (inch)	21.10	22.67
Weight (lb)	187	234

HOL (ft)	Length code	M1 (inch)	M3 (inch)	min R...max R (ft)	Weight* (lb)
24'-6"	F	32.75	17.08	5'-6 7/8"	4388
32'-9"	G	40.23	13.34	5'-6 7/8"...6'-6 3/4"	4719
44'-3"	H	50.07	14.33	6'-6 3/4"...7'-10 1/2"	4983
60'-8"	J	63.85	15.31	7'-10 1/2"...8'-10 5/16"	5468
75'-5"	K	75.66	15.31	8'-10 5/16"...10'-2"	5865
90'-2"	L	89.44	16.29	10'-2"...11'-1 7/8"	6350
101'-8"	M	99.29	17.28	11'-1 7/8"...12'-5 5/8"	6681
116'-5"	N	111.10	19.25	12'-5 5/8"...13'-9 3/8"	7122

Load (TON)	Class ASME	Hoisting motor				
		Hoisting speed (ft/min): Gear code				
		16/2.4: E	20/3.1: F	25/3.9: G	32: H	40: J
25	H4+	P6,T6	P6,T6	P7,T7	T8	T9
30	H4	P6,T6	P6,T6	P7,T7	T8	T9
40	H3	P6,T6	P7,T7	T8	T9	-

Note: minR is minimum rail gauge when service platform is supplied.

Standard rail gauges are 4'-7 1/8", 5'-6 7/8", 6'-6 3/4", 7'-10 1/2", 8'-10 5/16", 10'-2", 11'-1 7/8", 12'-5 5/8" and 13'-9 3/8".

M3 and weight are calculated at the minR

*Weight calculated with P6 motor.

This document is the absolute property of R&M Materials Handling, Inc. This document must not be copied without the written permission of R&M Materials Handling, Inc. The contents thereof must not be disclosed to a third party nor be used for any unauthorized purpose. Contravention will be prosecuted.

ETTFAL Design	ETTFAL Chd	Appd	Ref Drawing	QE-M-24
2003-01-13 Date	TROLLEY; DOUBLE GIRDER			1 of 15 Folder
SLEQDCV Owner Dept	MEDIUM, 2X4 ROPE FALLS			
R&M MATERIALS HANDLING, INC. HOIST & CRANE PRODUCTS SERVICES, INC.	D006656-A			Issue 0