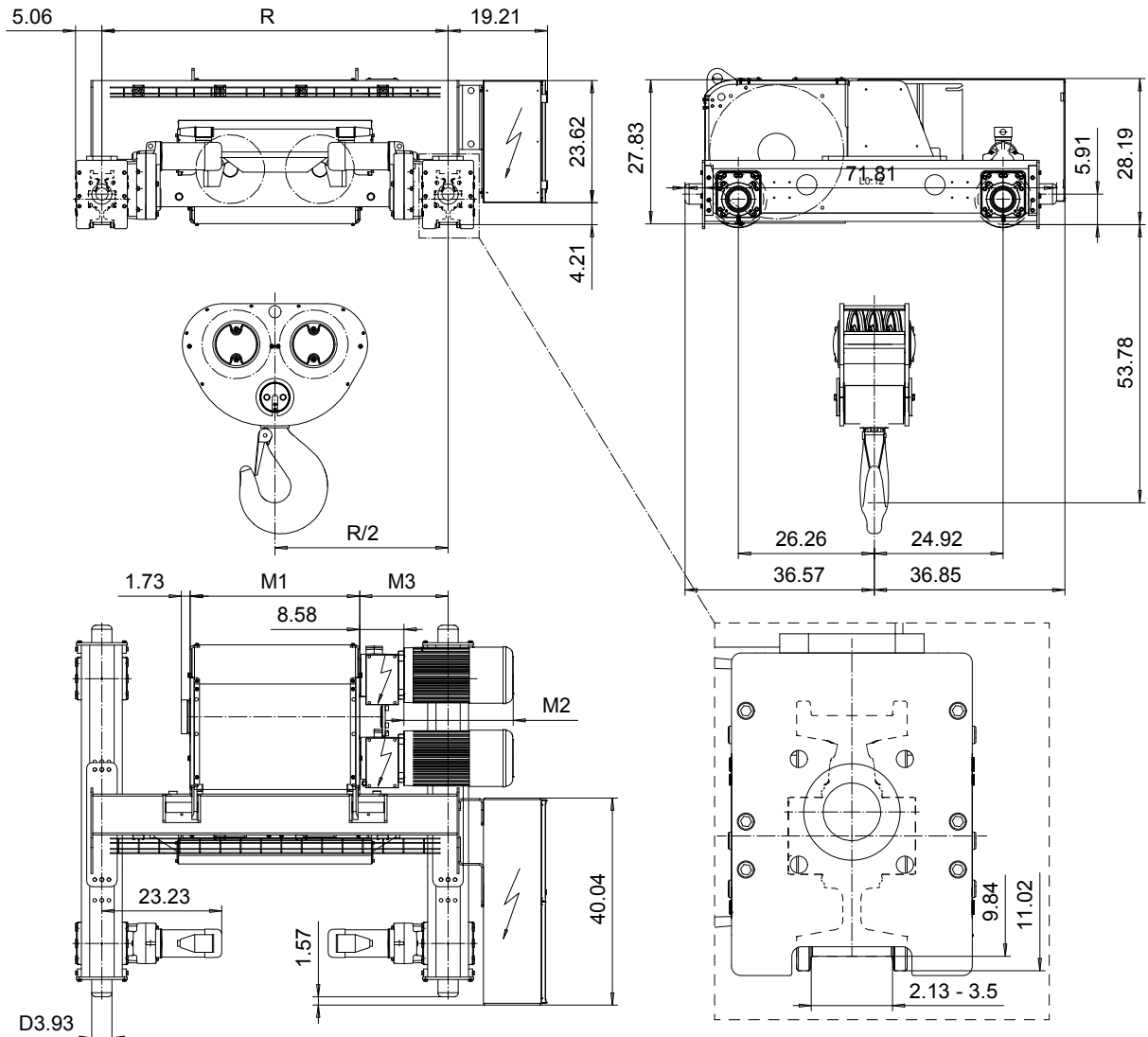


**DOUBLE GIRDER, MEDIUM, 6 PART DOUBLE**  
**Hoist type:**  
**SX7 062...D0**

**US-60Hz**



Motor	P6,T6,T7, T9	P7
M2 (inch)	21.10	22.67
Weight (lb)	187	234

Load (TON)	Class ASME	Hoisting motor				
		Hoisting speed (ft/min): Gear code				
		10/1.6: E	12.5/1.9: F	16/2.3: G	20: H	25: J
40	H4+	P6,T6	P6,T6	P7,T7	T8	T9
50	H4	P6,T6	P6,T6	P7,T7	T8	T9
60	H3	P6,T6	P7,T7	T8	T9	-

HOL (ft)	Length code	M1 (inch)	M3 (inch)	min R...max R (ft)	Weight* (lb)
16'-4"	F	32.75	17.08	5'-6 7/8"	5138
21'-3"	G	40.23	13.34	5'-6 7/8" ...6'-6 3/4"	5468
29'-6"	H	50.07	14.33	6'-6 3/4" ...7'-10 1/2"	5843
41'-0"	J	63.85	15.31	7'-10 1/2" ...8'-10 5/16"	6439
49'-2"	K	75.66	15.31	8'-10 5/16" ...10'-2"	7012
60'-8"	L	89.44	16.29	10'-2" ...11'-1 7/8"	7585
67'-6"	M	99.29	17.28	11'-1 7/8" ...12'-5 5/8"	8231
77'-1"	N	111.10	19.25	12'-5 5/8" ...13'-9 3/8"	8600

Note: minR is minimum rail gauge when service platform is supplied.  
 Standard rail gauges are 4'-7 1/8", 5'-6 7/8", 6'-6 3/4", 7'-10 1/2", 8'-10 5/16", 10'-2", 11'-1 7/8", 12'-5 5/8" and 13'-9 3/8".  
 M3 and weight are calculated at the minR

\*Weight calculated with P6 motor.

This document is the absolute property of R&M Materials Handling, Inc. This document must not be copied without the written permission of R&M Materials Handling, Inc. The contents thereof must not be disclosed to a third party nor be used for any unauthorized purpose. Contravention will be prosecuted.

ETTFAL Design	ETTFAL Chd	Appd	Ref Drawing	QE-M-26
2003-01-13 Date	TROLLEY; DOUBLE GIRDER			1 of 15 Folder
SLEQDCV Owner Dept	MEDIUM, 2X6 ROPE FALLS			Issue
R&M MATERIALS HANDLING, INC. HOIST & CRANE PRODUCTS SERVICES, INC.	D006657-A			0