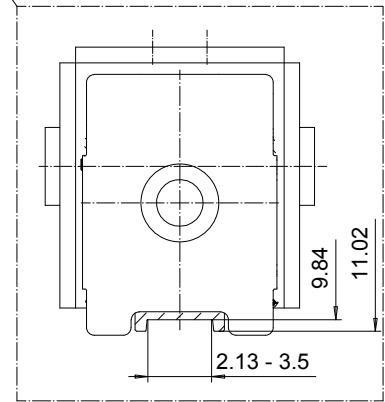
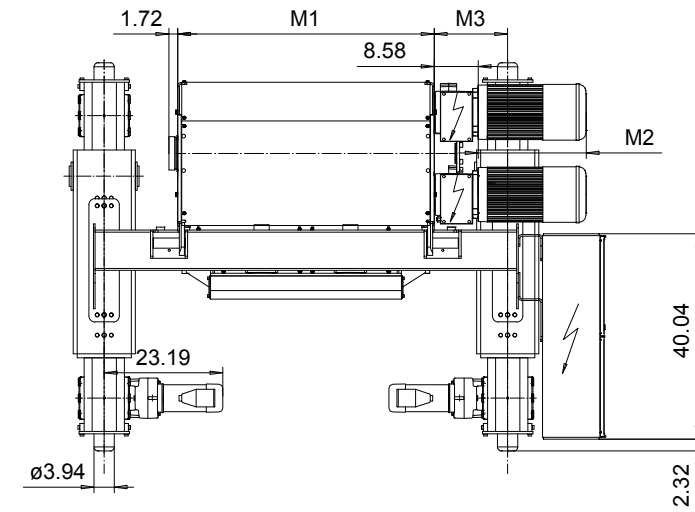
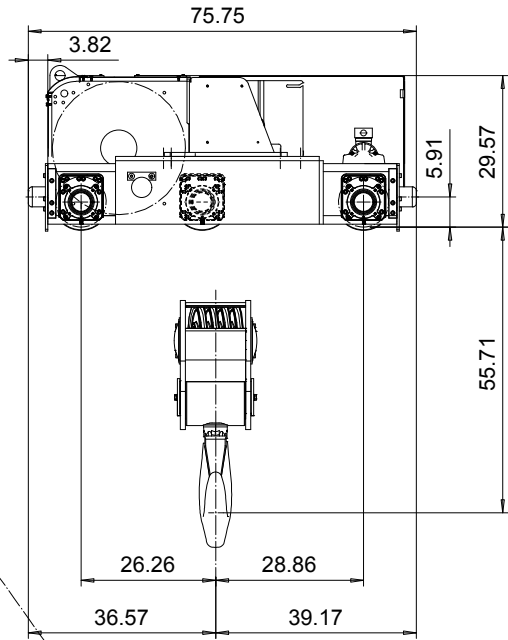
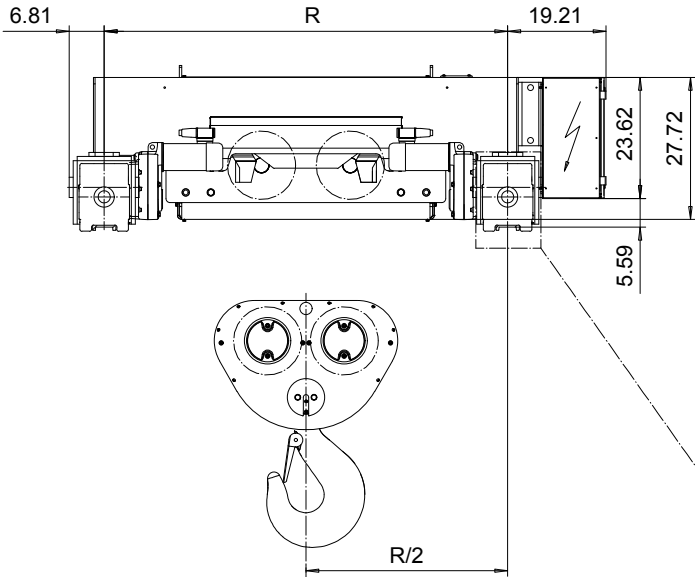


DOUBLE GIRDER, MEDIUM, 8 PART DOUBLE
Hoist type:
SX7 082...D0

US-60Hz



Motor	P6,T6,T7, T8, T9	P7
M2 (inch)	21.10	22.67
Weight (lb)	187	234

HOL (ft)	Length code	M1 (inch)	M3 (inch)	min R...max R (ft)	Weight (lb)
21'-3"	H	50.07	22.20	7'-10 1/2"	6681
29'-6"	J	63.85	15.31	7'-10 1/2"...8'-10 5/16"	7277
36'-1"	K	75.66	15.31	8'-10 5/16"...10'-2"	7850
44'-3"	L	89.44	16.29	10'-2"...11'-1 7/8"	8445
50'-10"	M	99.29	17.28	11'-1 7/8"...12'-5 5/8"	8864
57'-4"	N	111.10	19.25	12'-5 5/8"...13'-9 3/8"	9437

Load (TON)	Class ASME	Hoisting motor				
		Hoisting speed (ft/min): Gear code				
		8/1.2: E	10/1.6: F	12.8/2: G	16: H	20: J
60	H4	P6,T6	P6,T6	P7,T7	T8	T9
80	H3	P6,T6	P7,T7	T8	T9	-

Note: minR is minimum rail gauge when service platform is supplied.

Standard rail gauges are 4'-7 1/8", 5'-6 7/8", 6'-6 3/4", 7'-10 1/2", 8'-10 5/16", 10'-2", 11'-1 7/8", 12'-5 5/8" and 13'-9 3/8".

M3 and weight are calculated at the minR

*Weight calculated with P6 motor.

This document is the absolute property of R&M Materials Handling, Inc. This document must not be copied without the written permission of R&M Materials Handling, Inc. The contents thereof must not be disclosed to a third party nor be used for any unauthorized purpose. Contravention will be prosecuted.

ETFPAL Design 2003-01-13 Date	ETFPAL Chd TROLLEY; DOUBLE GIRDER	Appd	Ref Drawing MEDIUM, 2X8 ROPE FALLS	QE-M-28
SLEQDOCV Owner Dept	R&M R&M MATERIALS HANDLING, INC. ROPE & GEAR PRODUCTS SPRINGFIELD, OHIO			Issue 0
	D006658-A			