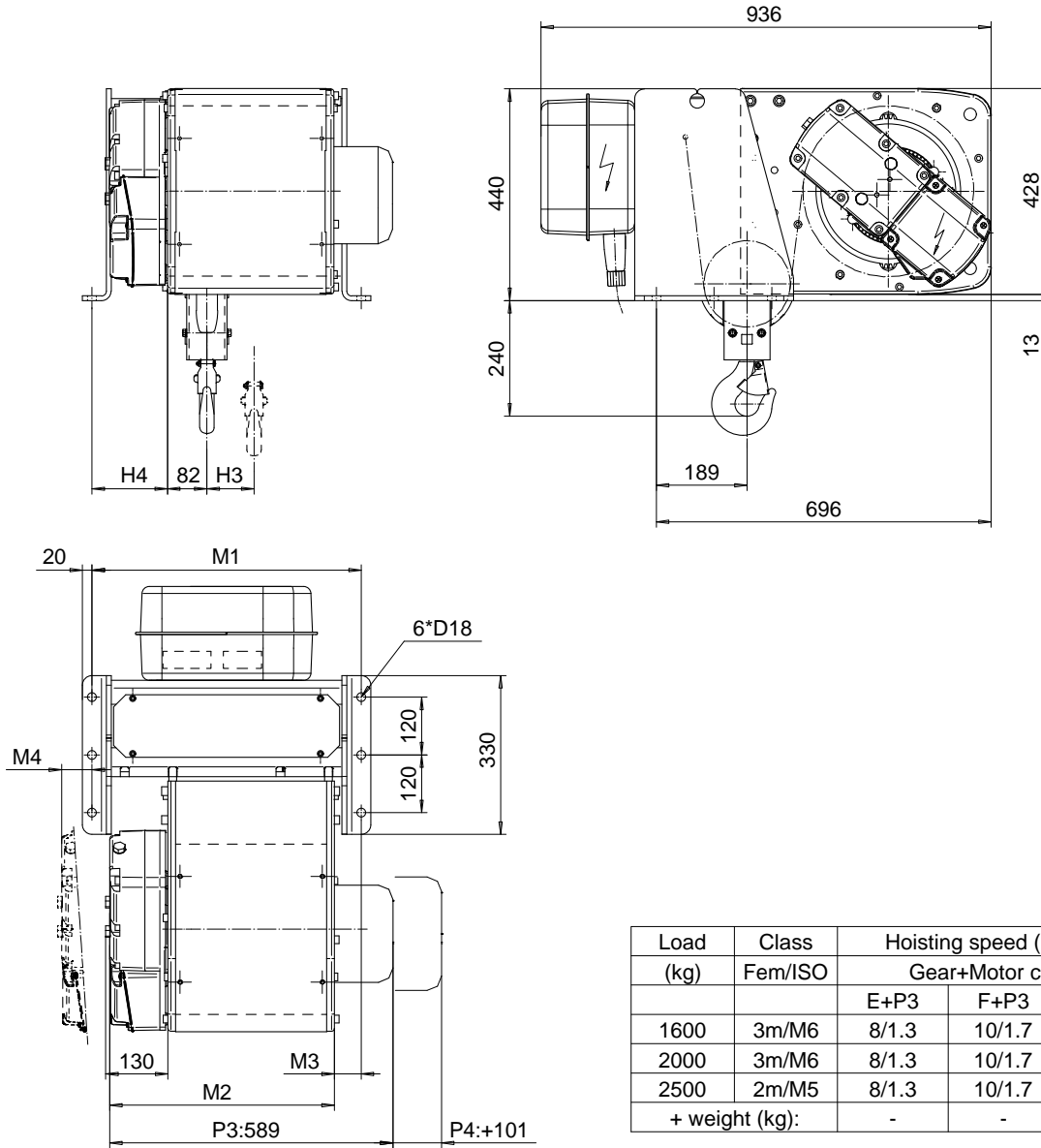


FOOT MOUNT, 2 PART SINGLE
Hoist type:
SX4 021...F0


SI-50Hz



Load (kg)	Class Fem/ISO	Hoisting speed (m/min)		
		Gear+Motor code:		
		E+P3	F+P3	H+P4
1600	3m/M6	8/1.3	10/1.7	16/2.7
2000	3m/M6	8/1.3	10/1.7	16/2.7
2500	2m/M5	8/1.3	10/1.7	16/2.7
+ weight (kg):		-	-	20

HOL	Length	M1	M2	M3	M4	H3	H4	Weight
(m)	code	(mm)	(mm)	(mm)	(mm)	(mm)	(mm)	(kg)
12	B	560	467	56	-37	98	157	195
18	C	560	567	56	63	147	57	205
24	D	780	667	176	63	196	57	220
30	E	780	787	56	63	256	57	240

This document is the absolute property of R&M Materials Handling, Inc. This document must not be copied without the written permission of R&M Materials Handling, Inc. The contents thereof must not be disclosed to a third party nor be used for any unauthorized purpose. Contravention will be prosecuted.

CSDPAL Design	CSDPAL Title	Appd	Ref Drawing	QB-F-02
2002-08-27 Date	HOIST; FIXED			 1 : 1 F.S. Total:
SLEPQEN01 Owner Dept	2 ROPE FALLS			
R&M MATERIALS HANDLING, INC. EQUIPMENT DIVISION	D002086-A			Drawn 3