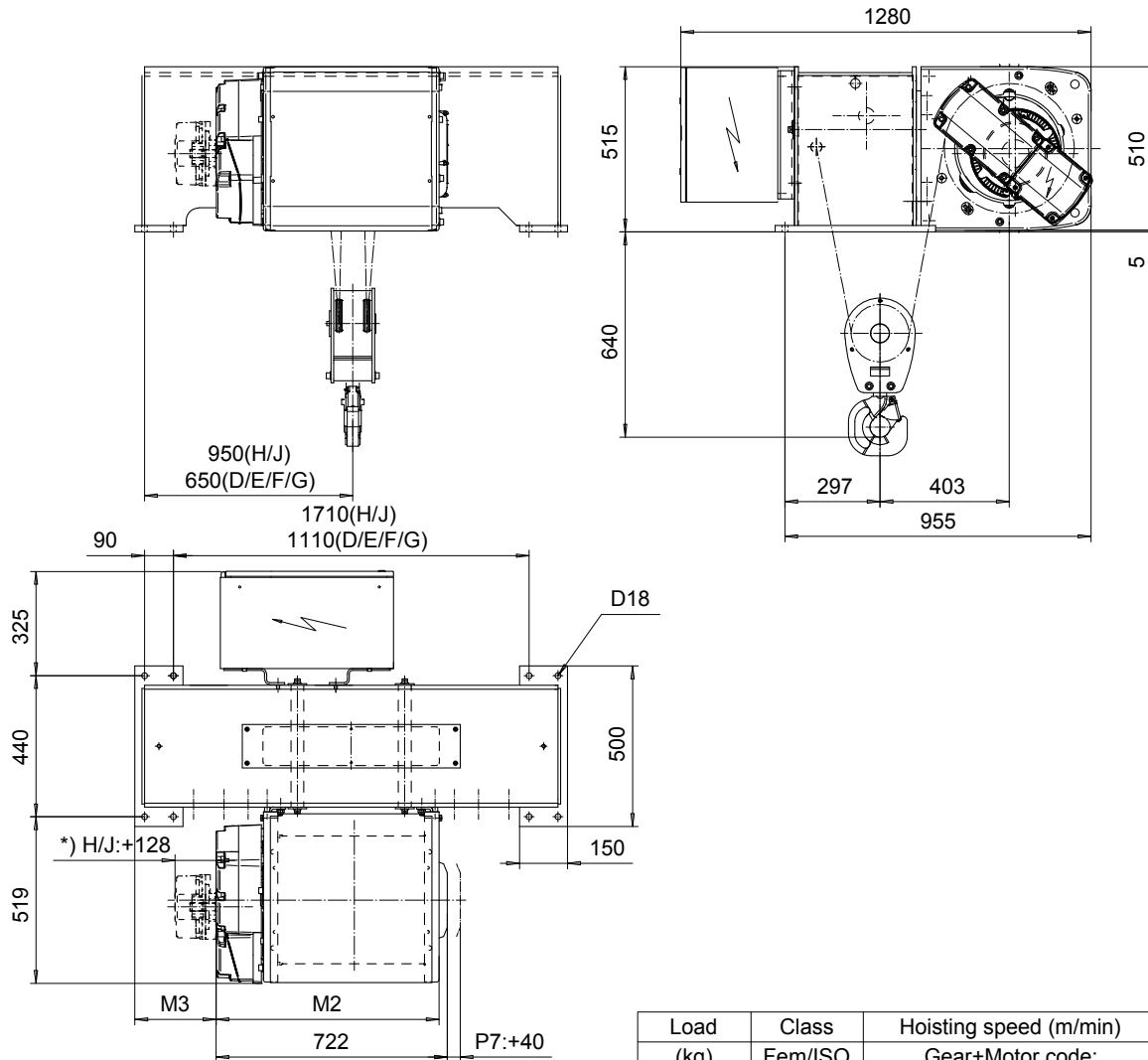


FOOT MOUNT, 2 PART DOUBLE

Hoist type:

SX5 022...F0

SI-50Hz



| Load (kg) | Class Fem/ISO | Hoisting speed (m/min) | | |
|----------------|---------------|------------------------|--------|--------|
| | | Gear+Motor code: | | |
| | | F+P5 | H+P6 | J+P7 |
| 4000 | 3m/M6 | 10/1.7 | 16/2.7 | 20/3.3 |
| 5000 | 2m/M5 | 10/1.7 | 16/2.7 | 20/3.3 |
| + weight (kg): | | - | 30 | 40 |

| HOL (m) | Length code | M2 (mm) | M3 (mm) | Weight (kg) |
|---------|-------------|---------|---------|-------------|
| 8.5 | D | 696 | 253 | 380 |
| 13 | E | 816 | 193 | 440 |
| 18 | F | 966 | 118 | 450 |
| 25 | G | 1156 | 23 | 490 |
| 33.5 | H | 1406 | 198 | 605 |
| 46 | J | 1756 | 23 | 1000 |

Primary brake is mounted on gearcase for drum lengths H and J.

This document is the absolute property of R&M Materials Handling, Inc. This document must not be copied without the written permission of R&M Materials Handling, Inc. The contents thereof must not be disclosed to a third party nor be used for any unauthorized purpose. Contravention will be prosecuted.

| | | | | |
|---|----------------|------|-------------|----------------|
| ETFPAL Design | ETFPAL Chd | Appd | Ref Drawing | QC-F-22 |
| 2002-08-30 Date | HOIST; FIXED | | | 1:10 Folder |
| SLEQDCV Owner Dept | 2x2 ROPE FALLS | | | |
| R&M MATERIALS HANDLING, INC. HOIST & CRANE PRODUCTS | D002129-A | | | Issue 4 |