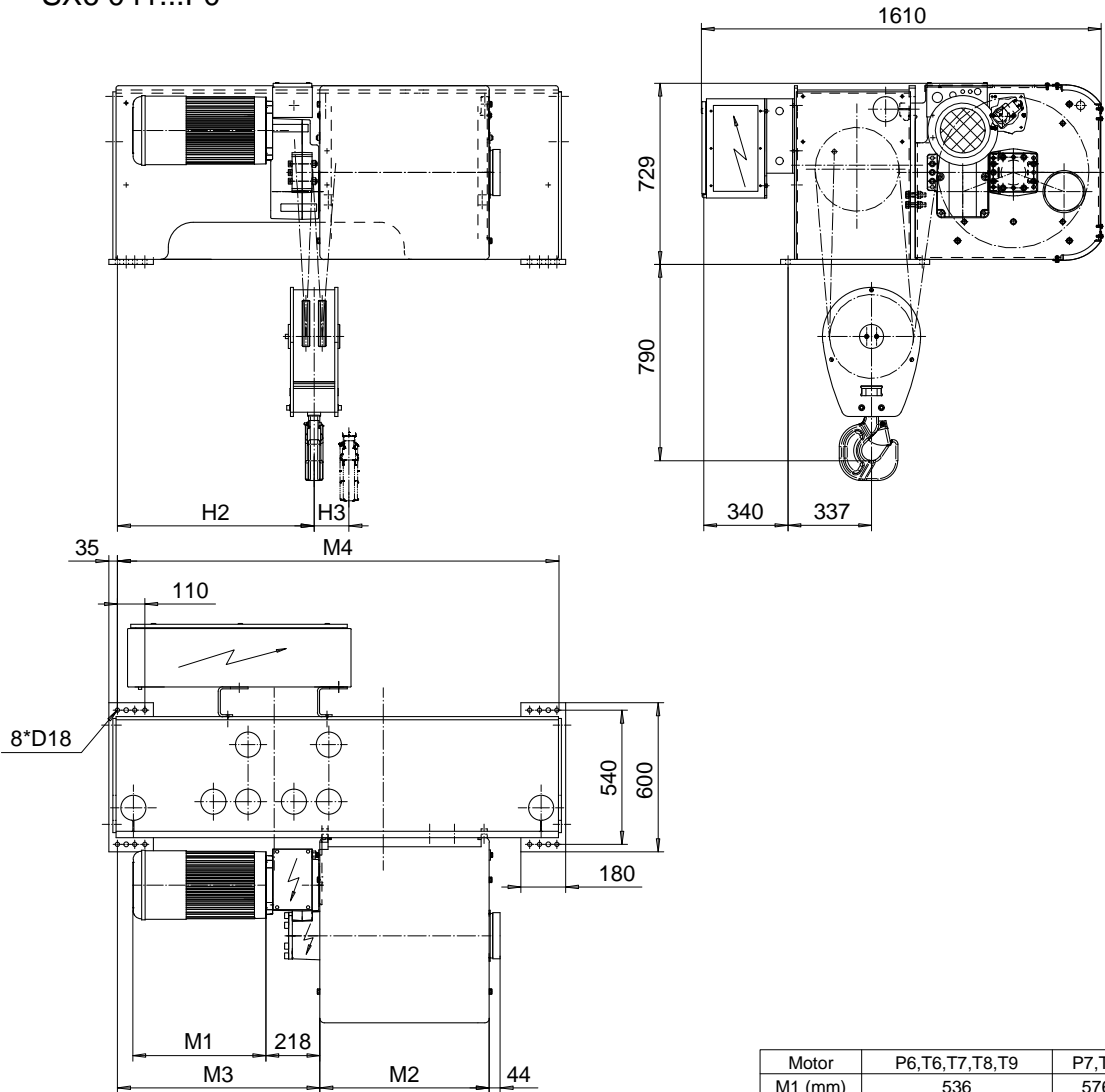


FOOT MOUNT, 4 PART SINGLE
Hoist type:
SX6 041...F0

SI-50Hz



Motor	P6,T6,T7,T8,T9	P7,TA	P8
M1 (mm)	536	576	711

HOL (m)	Length code	M2 (mm)	M3 (mm)	M4 (mm)	H2 (mm)	H3 (mm)	Weight (kg)
7.5	C	462	815	1770	808	69	1400
10.5	D	562	815	1770	808	94	1425
14	E	682	815	1770	808	125	1475
18	F	832	475	1770	471	161	1525
23.5	G	1022	475	1770	471	210	1625
30.5	H	1272	469	2580	465	273	1900
40	J	1622	469	2580	465	360	2000
48.5	K	1922	469	2580	465	434	2100

Load (kg)	Class	Hoisting motor				
		Hoisting speed (m/min): Gear code				
	Fem/ISO	4/0.7 : E	5/0.8 : F	6.3/1.1 : G	8 : H	10 : J
12500	3m/M6	P6,T6	P6,T6	P7,T7	T8	T9
16000	2m/M5	P6,T6	P6,T6	P7,T7	T8	T9
20000	1Am/M4	P6,T6	P7,T7	P8,T8	T9	TA

ETFPAL Design 2002-09-02 Date	ETFPAL Chd Appd	Ref Drawing	QD-F-04
SLEQDOCV Owner Dept	HOIST; FIXED 4 ROPE FALLS		1 of 13 Folder
R&M R&M MATERIALS HANDLING, INC. HOIST & CRANE PRODUCTS SHELDONVILLE, OHIO	D002143-A		Issue 6

This document is the absolute property of R&M Materials Handling, Inc. This document must not be copied without the written permission of R&M Materials Handling, Inc. The contents thereof must not be disclosed to a third party nor be used for any unauthorized purpose. Contravention will be prosecuted.