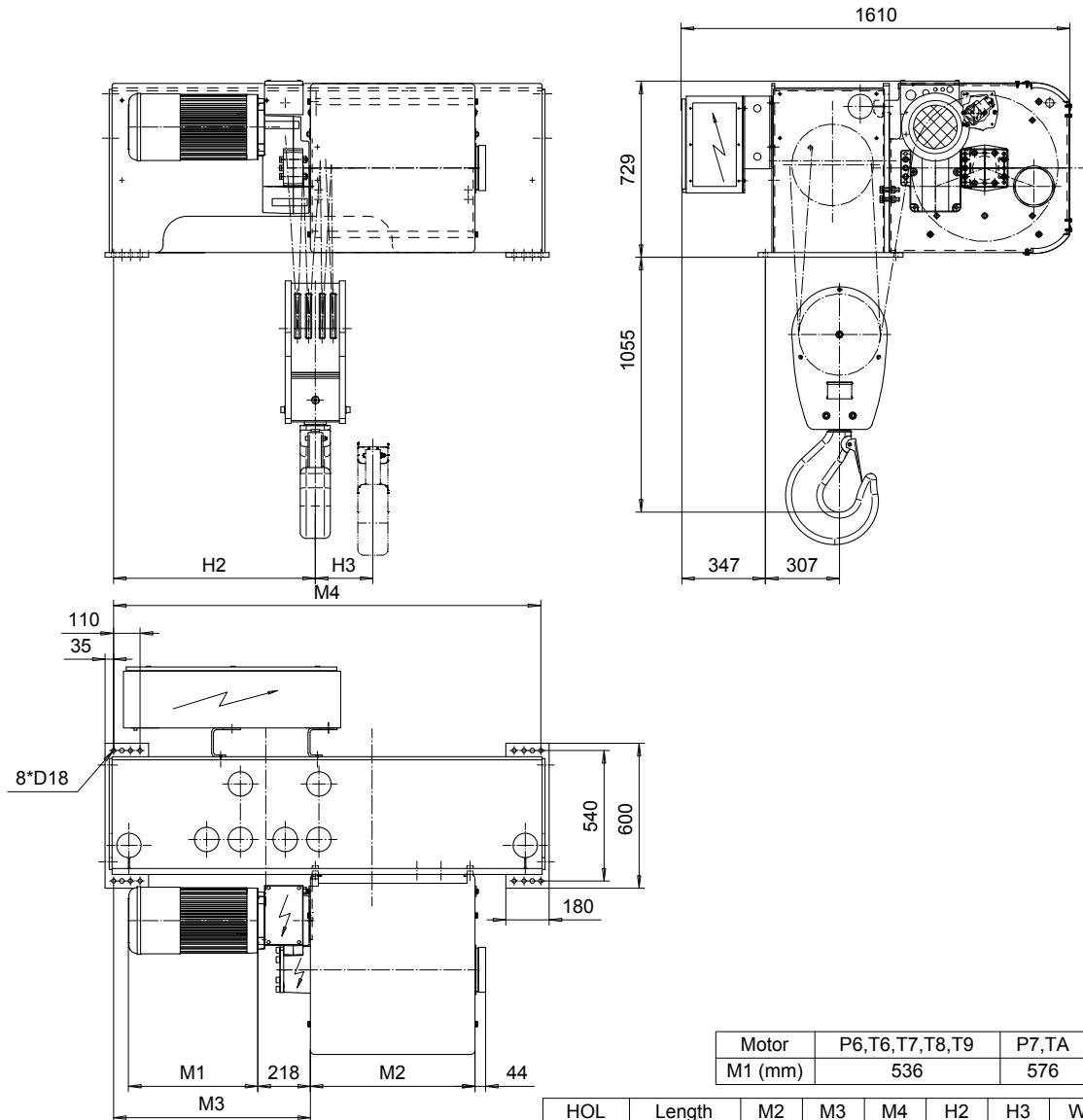


FOOT MOUNT, 8 PART SINGLE
Hoist type:
SX6 081...F0

SI-50Hz



Motor	P6,T6,T7,T8,T9	P7,TA	P8
M1 (mm)	536	576	711

HOL (m)	Length code	M2 (mm)	M3 (mm)	M4 (mm)	H2 (mm)	H3 (mm)	Weight (kg)
7	E	682	815	1770	845	63	1625
9	F	832	475	1770	508	81	1675
11.5	G	1022	475	1770	508	105	1775
15	H	1272	469	2580	502	137	2050
20	J	1622	469	2580	502	180	2150
24	K	1922	469	2580	502	217	2250

Load (kg)	Class Fem/ISO	Hoisting motor						
		Hoisting speed (m/min): Gear code						
		2/0.3: E	2.5/0.4: F	3.2/0.5: G	3.2: G	4: H	5: J	
32000	2m/M5	P6,T6	P7,T7	----	T8	T9	TA	
40000	1Am/M4	P6,T6	P7,T7	P8	T8	T9	TA	

This document is the absolute property of R&M Materials Handling, Inc. This document must not be copied without the written permission of R&M Materials Handling, Inc. The contents thereof must not be disclosed to a third party nor be used for any unauthorized purpose. Contravention will be prosecuted.

ETFPAL Design	ETFPAL Chd	Appd	Ref Drawing	QD-F-08
2002-09-02 Date	HOIST; FIXED			
SLEQDOCV Owner Dept	8 ROPE FALLS			
R&M MATERIALS HANDLING, INC. HOIST & CRANE PRODUCTS SHERBOURNE, ONT.	D002148-A			
	7			