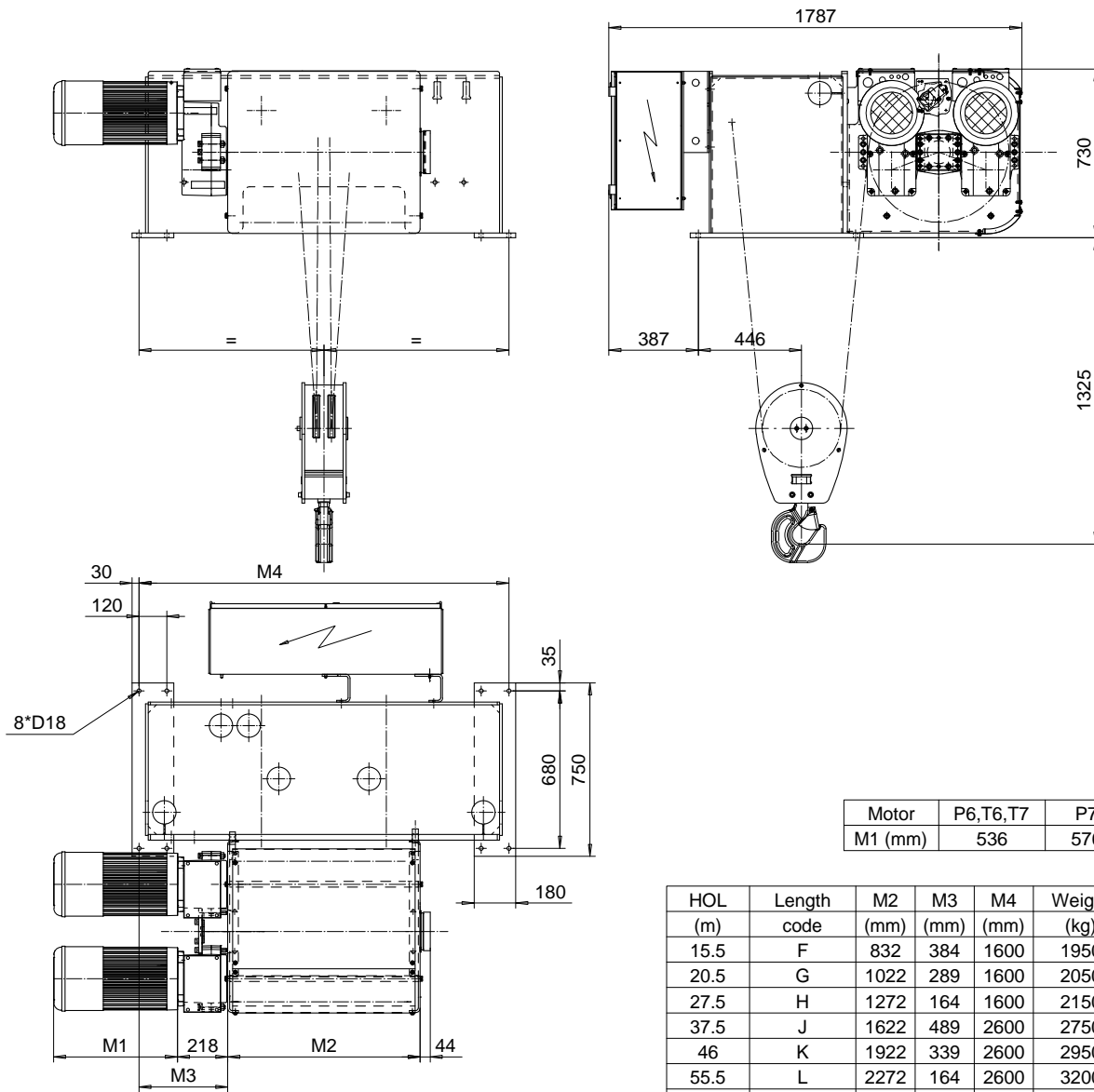


**FOOT MOUNT, 2 PART DOUBLE**  
**Hoist type:**  
**SX7 022...F0**

**SI-50Hz**



Motor	P6,T6,T7	P7
M1 (mm)	536	576

HOL (m)	Length code	M2 (mm)	M3 (mm)	M4 (mm)	Weight (kg)
15.5	F	832	384	1600	1950
20.5	G	1022	289	1600	2050
27.5	H	1272	164	1600	2150
37.5	J	1622	489	2600	2750
46	K	1922	339	2600	2950
55.5	L	2272	164	2600	3200
62.5	M	2522	464	3450	3700
71	N	2822	314	3450	3900

Load (kg)	Class Fem/ISO	Hoisting motor				
		Hoisting speed (m/min): Gear code				
		8/1.2: E	10/1.6: F	12.5/ 2: G	16: H	20: J
12500	3m/M6	P6,T6	P6,T6	P7,T7	T8	T9
16000	2m/M5	P6,T6	P6,T6	P7,T7	T8	T9
20000	1Am/M4	P6,T6	P7,T7	T8	T9	-

ETFPAL	ETFPAL	Appd	Ref Drawing	QE-F-22
Design	2003-01-13	Date	HOIST; FIXED	
SLEQDOCV	Owner Dept	2x2 ROPE FALLS		1 of 13
R&M	R&M MATERIALS HANDLING, INC.	D002331-A		Folder
				Issue
				5

This document is the absolute property of R&M Materials Handling, Inc. This document must not be copied without the written permission of R&M Materials Handling, Inc. The contents thereof must not be disclosed to a third party nor be used for any unauthorized purpose. Contravention will be prosecuted.