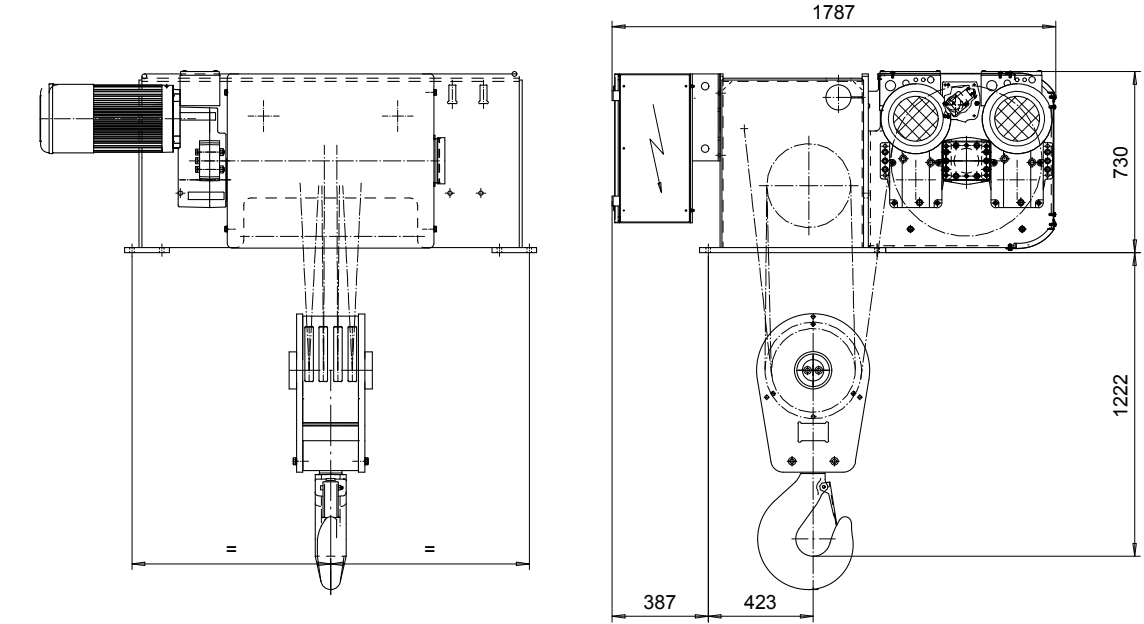


**FOOT MOUNT, 4 PART DOUBLE**  
**Hoist type:**  
**SX7 042...F0**

SI-50Hz



Motor	P6,T6,T7	P7
M1 (mm)	536	576

HOL (m)	Length code	M2 (mm)	M3 (mm)	M4 (mm)	Weight (kg)
7.5	F	832	384	1600	2100
10	G	1022	289	1600	2200
13.5	H	1272	164	1600	2300
18.5	J	1622	489	2600	2900
23	K	1922	339	2600	3100
27.5	L	2272	164	2600	3350
31	M	2522	464	3450	3850
35.5	N	2822	314	3450	4050

Load (kg)	Class Fem/ISO	Hoisting motor				
		Hoisting speed (m/min): Gear code				
		4/0.6: E	5/0.8: F	6.3/1: G	8: H	10: J
25000	3m/M6	P6,T6	P6,T6	P7,T7	T8	T9
32000	2m/M5	P6,T6	P6,T6	P7,T7	T8	T9
40000	1Am/M4	P6,T6	P7,T7	T8	T9	-

ETFPAL Design	ETFPAL Chd	Appd	Ref Drawing	QE-F-24
2003-01-13 Date	HOIST; FIXED			1 of 13 Folder
SLEQDCV Owner Dept	2x4 ROPE FALLS			
R&M S&M MATERIALS HANDLING, INC. HOIST & CRANE PRODUCTS	D002333-A			Issue 6

This document is the absolute property of R&M Materials Handling, Inc. This document must not be copied without the written permission of R&M Materials Handling, Inc. The contents thereof must not be disclosed to a third party nor be used for any unauthorized purpose. Contravention will be prosecuted.