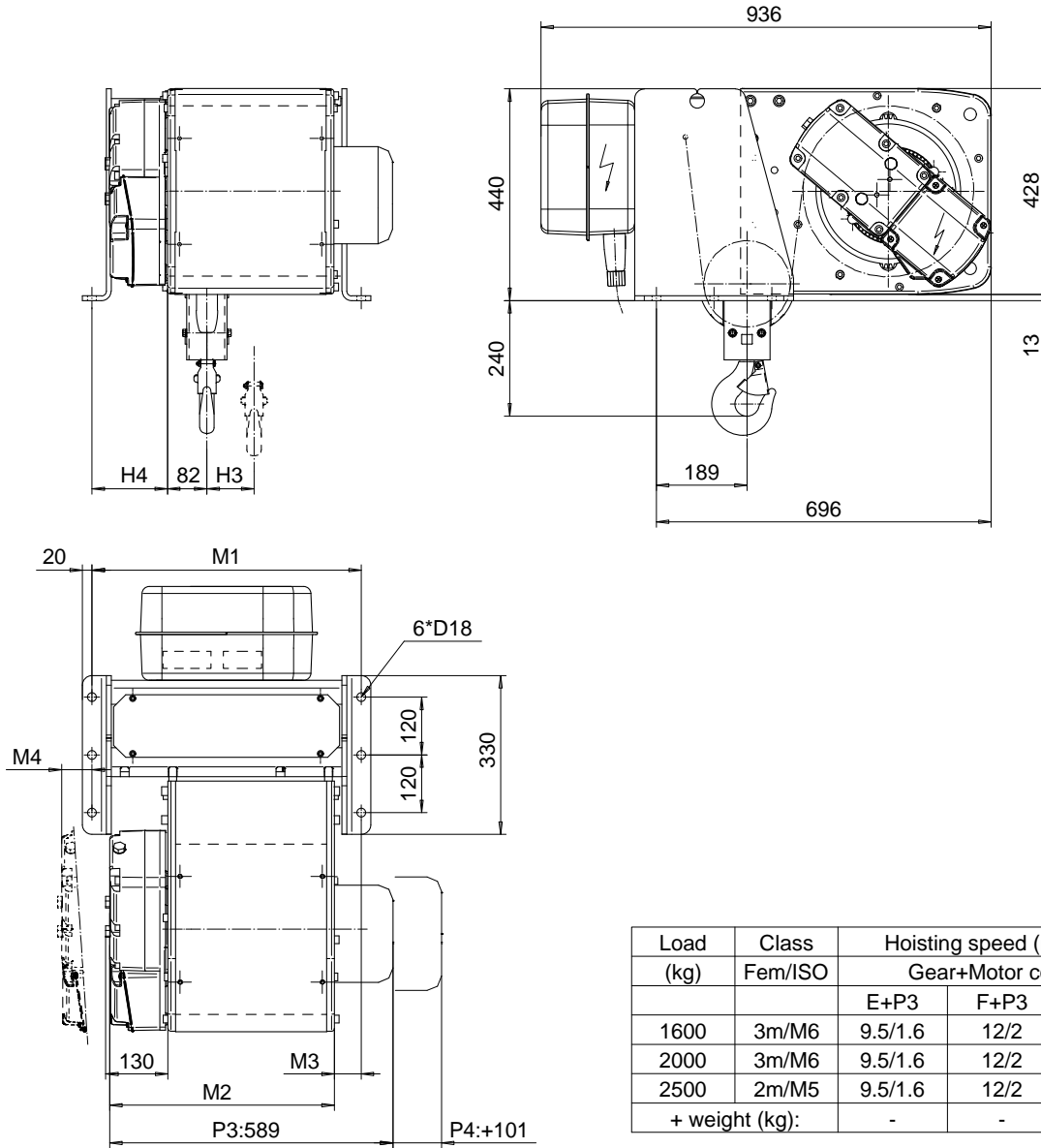


**FOOT MOUNT, 2 PART SINGLE**  
**Hoist type:**  
**SX4 021...F0**

**SI-60Hz**



Load (kg)	Class Fem/ISO	Hoisting speed (m/min)		
		Gear+Motor code:		
		E+P3	F+P3	H+P4
1600	3m/M6	9.5/1.6	12/2	19/3.2
2000	3m/M6	9.5/1.6	12/2	19/3.2
2500	2m/M5	9.5/1.6	12/2	19/3.2
+ weight (kg):		-	-	20

HOL (m)	Length code	M1 (mm)	M2 (mm)	M3 (mm)	M4 (mm)	H3 (mm)	H4 (mm)	Weight (kg)
12	B	560	467	56	-37	98	157	195
18	C	560	567	56	63	147	57	205
24	D	780	667	176	63	196	57	220
30	E	780	787	56	63	256	57	240

This document is the absolute property of R&M Materials Handling, Inc. This document must not be copied without the written permission of R&M Materials Handling, Inc. The contents thereof must not be disclosed to a third party nor be used for any unauthorized purpose. Contravention will be prosecuted.

CSDPAL Design 2002-08-27 Date SLEPQEN01 Owner Dept	CSDPAL Title Appd Ref Drawing	QB-F-02
HOIST: FIXED 2 ROPE FALLS		1 of 3 Title
R&M MATERIALS HANDLING, INC. EQUIPMENT DIVISION SHEWAN, USA	D002086-A	Drawn 3