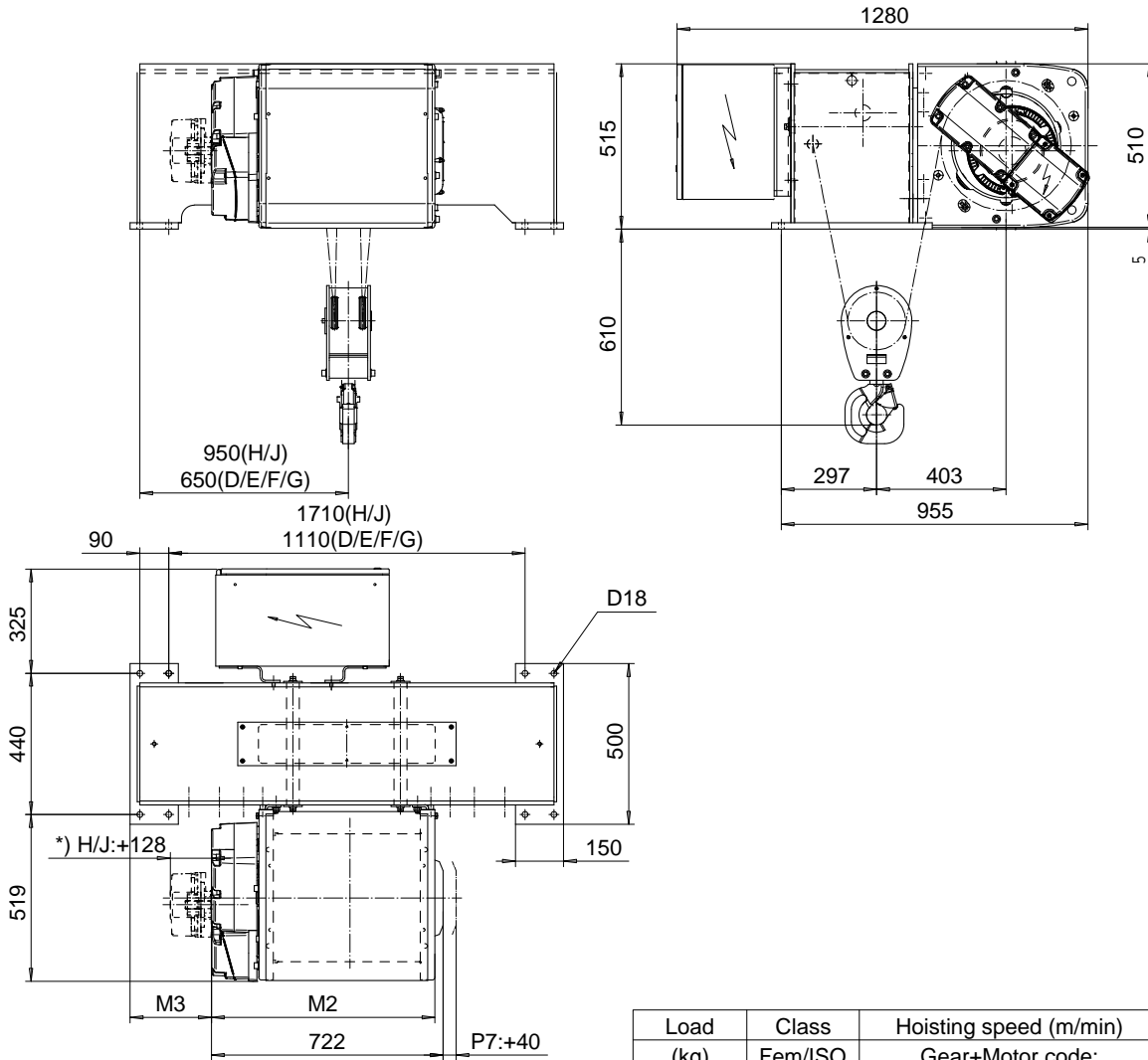


FOOT MOUNT, 2 PART DOUBLE

Hoist type:

SX5 022...F0

SI-60Hz



Load (kg)	Class Fem/ISO	Hoisting speed (m/min)		
		Gear+Motor code:		
		F+P5	H+P6	J+P7
4000	3m/M6	12/2	19/3.2	24/4
5000	2m/M5	12/2	19/3.2	24/4
+ weight (kg):		-	30	40

HOL (m)	Length code	M2 (mm)	M3 (mm)	Weight (kg)
8.5	D	696	253	380
13	E	816	193	440
18	F	966	118	450
25	G	1156	23	490
33.5	H	1406	198	605
46	J	1756	23	1000

Primary brake is mounted on gearcase for drum lengths H and J.

This document is the absolute property of R&M Materials Handling, Inc. This document must not be copied without the written permission of R&M Materials Handling, Inc. The contents thereof must not be disclosed to a third party nor be used for any unauthorized purpose. Contravention will be prosecuted.

ETFPAL Design	ETFPAL Chd	Appd	Ref Drawing	QC-F-22
2002-08-30 Date	HOIST; FIXED			1:10 Folder
SLEQDOCV Owner Dept	2x2 ROPE FALLS			
R&M MATERIALS HANDLING, INC. HOIST & GEAR PRODUCTS SHELBYVILLE, OHIO	D002129-A			Issue 4