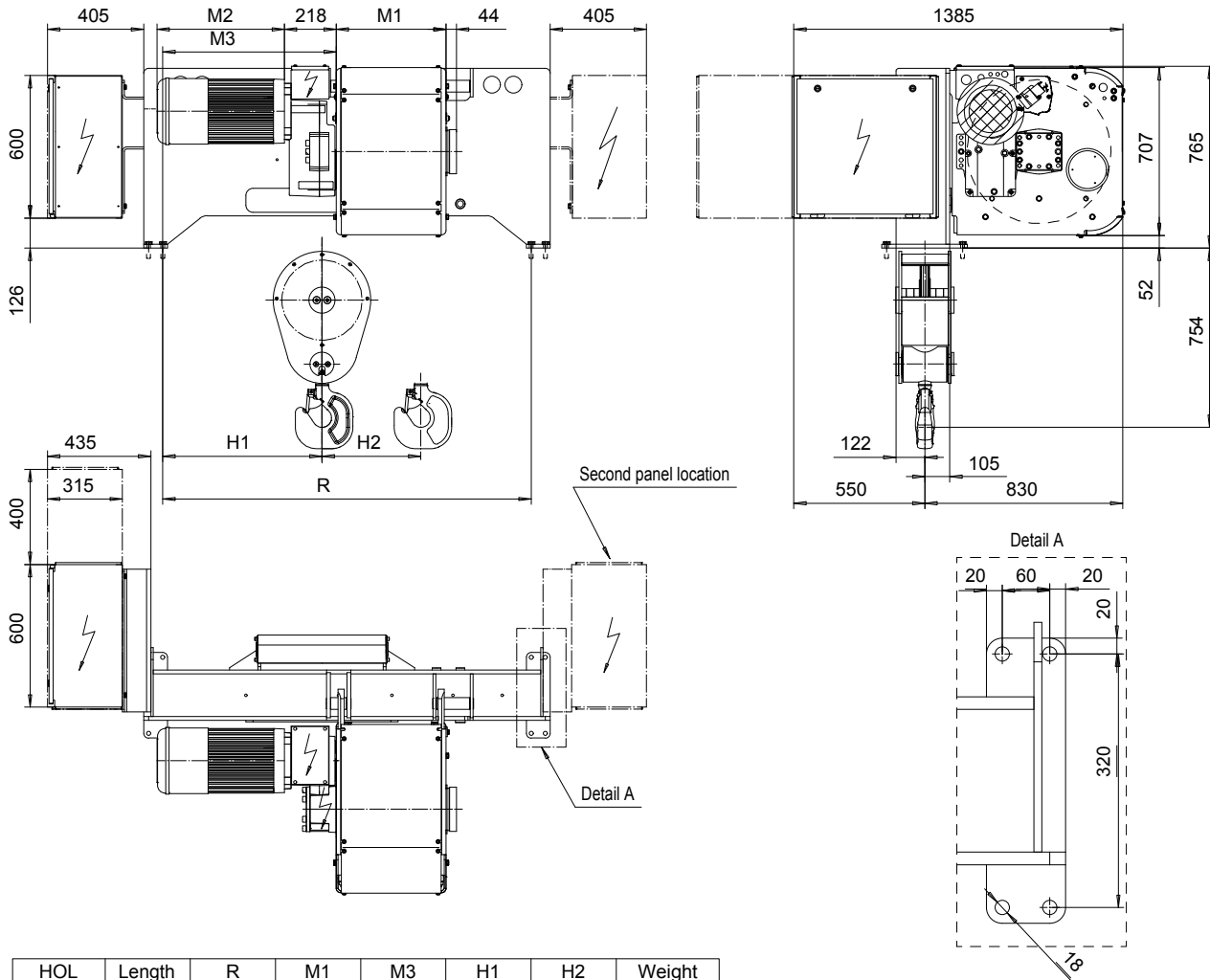


FOOT MOUNT, 2 PART SINGLE
Hoist type:
SX6 021...F0

SI-60Hz



HOL (m)	Length code	R (mm)	M1 (mm)	M3 (mm)	H1 (mm)	H2 (mm)	Weight (kg)
15.5	C	1550	462	730	691	139	1200
21	D	1550	562	730	691	188	1300
28	E	1780	682	560	521	251	1300
36	F	1780	832	560	521	322	1400
47	G	2290	1022	640	601	421	1500
61	H	2290	1272	640	601	546	1600
80.5	J	2699	1622	810	771	721	1900
97	K	2699	1922	810	771	868	2000

Load (kg)	Class Fem/ISO	Hoisting motor				
		Hoisting speed (m/min): Gear code				
		9.5/1.6 : E	12/2 : F	15/2.4 : G	19 : H	24 : J
6300	3m/M6	P6,T6	P6,T6	P7,T7	T8	T9
8000	2m/M5	P6,T6	P6,T6	P7,T7	T8	T9
10000	1Am/M4	P6,T6	P7,T7	P8,T8	T9	TA

Motor	P6,T6,T7,T8,T9	P7,TA	P8
M2 (mm)	536	576	711
Wgt (kg)	81	106	106

Hoist weight calculated with P6 motor weight.

This document is the absolute property of R&M Materials Handling, Inc. This document must not be copied without the written permission of R&M Materials Handling, Inc. The contents thereof must not be disclosed to a third party nor be used for any unauthorized purpose. Contravention will be prosecuted.

ETTPAL Design	ETTPAL Chd	Appd	Ref Drawing	QD-F-02
2002-09-02 Date	HOIST; FIXED			
SLEQDQCV Owner Dept	2 ROPE FALLS			
R&M MATERIALS HANDLING INC.	R&M MATERIALS HANDLING INC.	HOIST & CRANE PRODUCTS	D006936-A	
				Issue 1/2011