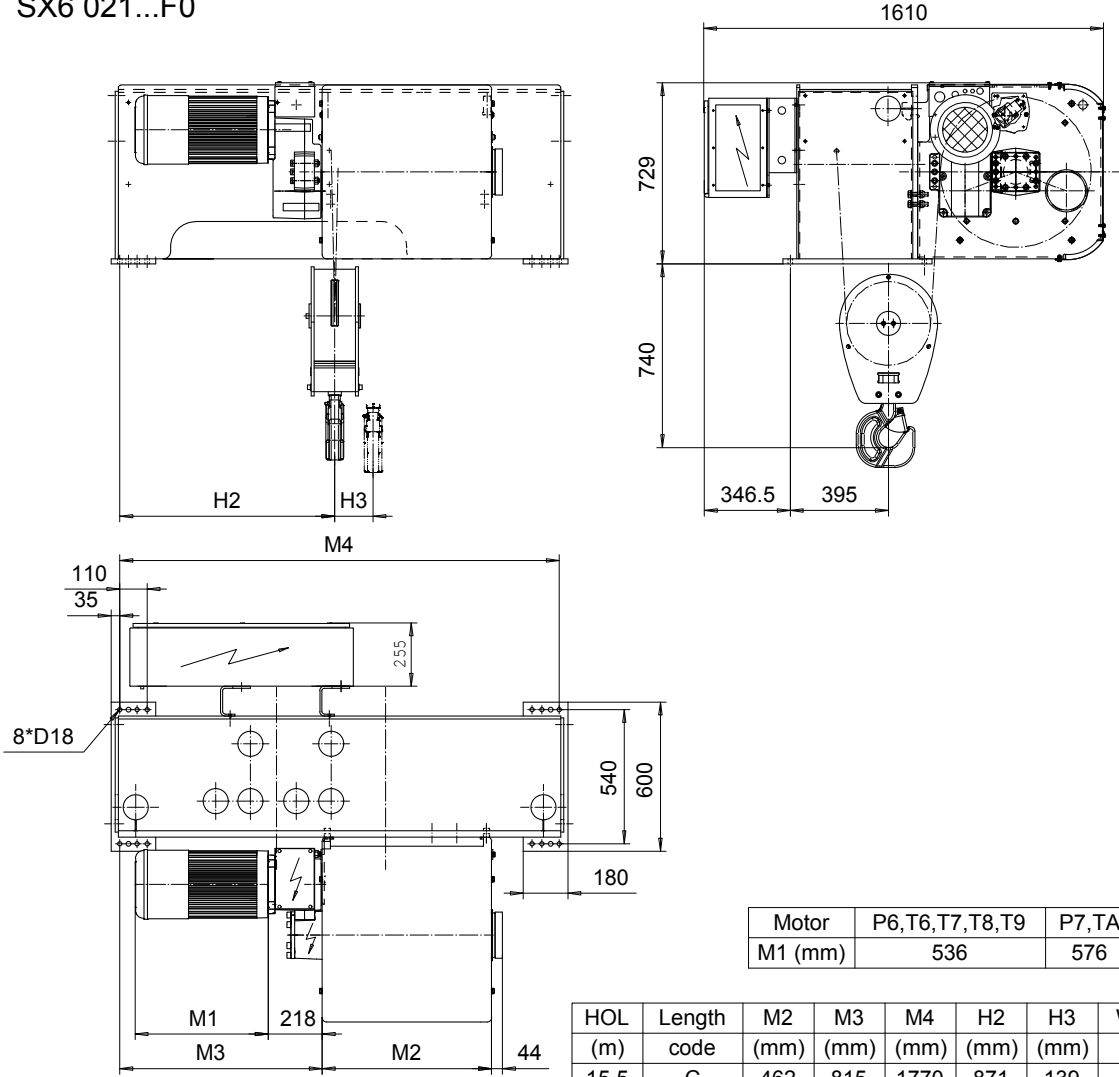


**FOOT MOUNT, 2 PART SINGLE**  
**Hoist type:**  
**SX6 021...F0**

SI-60Hz



Motor	P6,T6,T7,T8,T9	P7,TA	P8
M1 (mm)	536	576	711

HOL (m)	Length code	M2 (mm)	M3 (mm)	M4 (mm)	H2 (mm)	H3 (mm)	Weight (kg)
15.5	C	462	815	1770	871	139	1300
21	D	562	815	1770	871	188	1325
28	E	682	815	1770	871	251	1375
36	F	832	475	1770	534	322	1425
47	G	1022	475	1770	534	421	1525
61	H	1272	469	2580	528	546	1800
80.5	J	1622	469	2580	528	721	1900
97	K	1922	469	2580	528	868	2000

Load (kg)	Class Fem/ISO	Hoisting motor				
		Hoisting speed (m/min): Gear code				
		9.5/1.6 : E	12/2 : F	15/2.4 : G	19 : H	24 : J
6300	3m/M6	P6,T6	P6,T6	P7,T7	T8	T9
8000	2m/M5	P6,T6	P6,T6	P7,T7	T8	T9
10000	1Am/M4	P6,T6	P7,T7	P8,T8	T9	TA

ETFPAL Design 2002-09-02 Date SLEQDOCV Owner Dept	ETFPAL Chd Appd Ref Drawing	QD-F-02
R&M R&M MATERIALS HANDLING, INC. HOIST & CRANE PRODUCTS SHERBOURNE, ONT.	HOIST; FIXED 2 ROPE FALLS	1 of 15 Folder
	D002141-A	Issue 6

This document is the absolute property of R&M Materials Handling, Inc. This document must not be copied without the written permission of R&M Materials Handling, Inc. The contents thereof must not be disclosed to a third party nor be used for any unauthorized purpose. Contravention will be prosecuted.