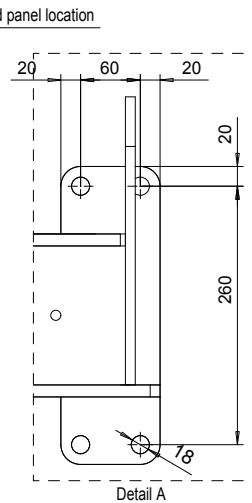
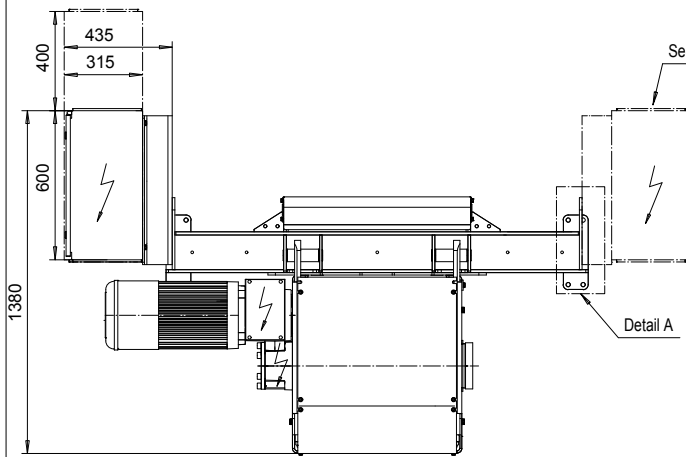
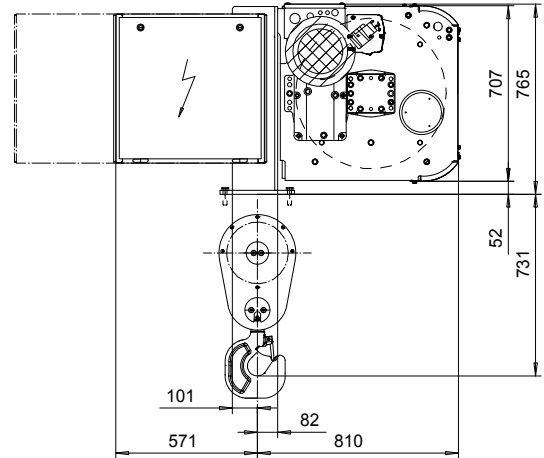
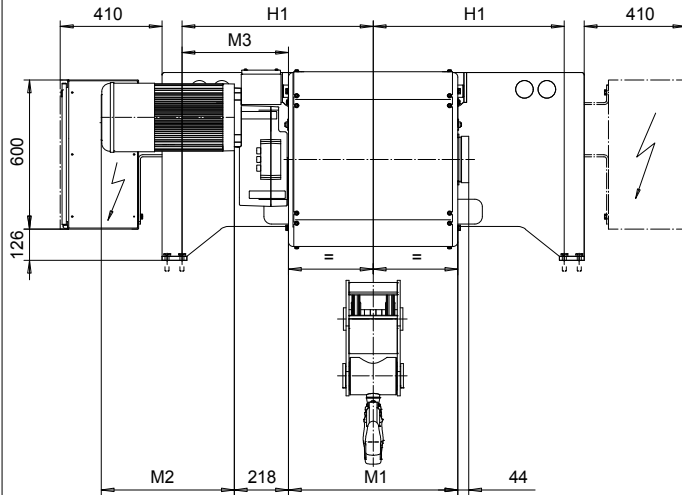


FOOT MOUNT, 2 PART DOUBLE
Hoist type:
SX6 022...F0

SI-60Hz



HOL (m)	Length code	M1 (mm)	M3 (mm)	H1 (mm)	Weight (kg)
16.5	E	682	429	770	1200
22	F	832	354	770	1300
29.5	G	1022	259	770	1300
39	H	1272	434	1070	1500
52	J	1622	259	1070	1600
63.5	K	1922	134	1095	1800
77	L	2272	-40	1095	2000
86.5	M	2522	109	1370	2200
98	N	2822	-40	1370	2300

Motor	P6,T6,T7,T8,T9	P7,TA	P8
M2 (mm)	536	576	711
Wgt (kg)	81	106	106

Load (kg)	Class Fem/ISO	Hoisting motor					
		Hoisting speed (m/min): Gear code					
		9.6/1.6 : E	12/2 : F	15/2.4 : G	19 : H	24 : J	
6300	3m/M6	P6,T6	P6,T6	P7,T7	T8	T9	
8000	2m/M5	P6,T6	P6,T6	P7,T7	T8	T9	
10000	1Am/M4	P6,T6	P7,T7	P8,T8	T9	TA	

Hoist weight calculated with P6 motor weight.

This document is the absolute property of R&M Materials Handling, Inc. This document must not be copied without the written permission of R&M Materials Handling, Inc. The contents thereof must not be disclosed to a third party nor be used for any unauthorized purpose. Contravention will be prosecuted.

ETTPAL Design	ETTPAL Chd	Appd	Ref Drawing	QD-F-22
2002-09-02 Date	HOIST; FIXED			1:13
SLEODOCV Owner Dept	2x2 ROPE FALLS			Folder
R&M MATERIALS HANDLING INC.	R&M MATERIALS HANDLING, INC. HOIST & CRANE PRODUCTS SPRINGFIELD, OHIO	D006940-A		Issue 1/2011