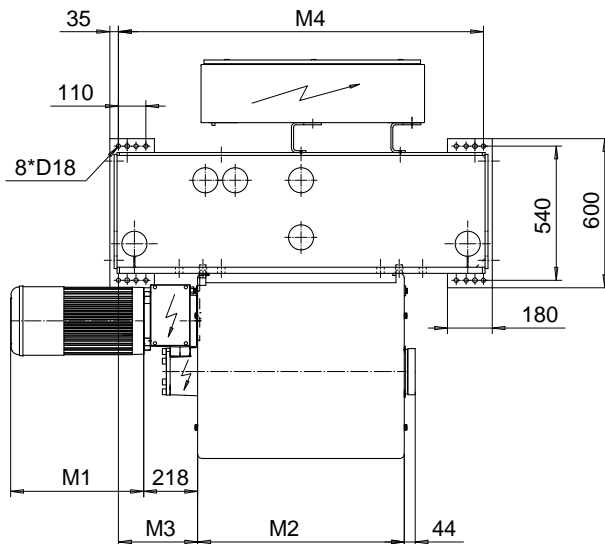
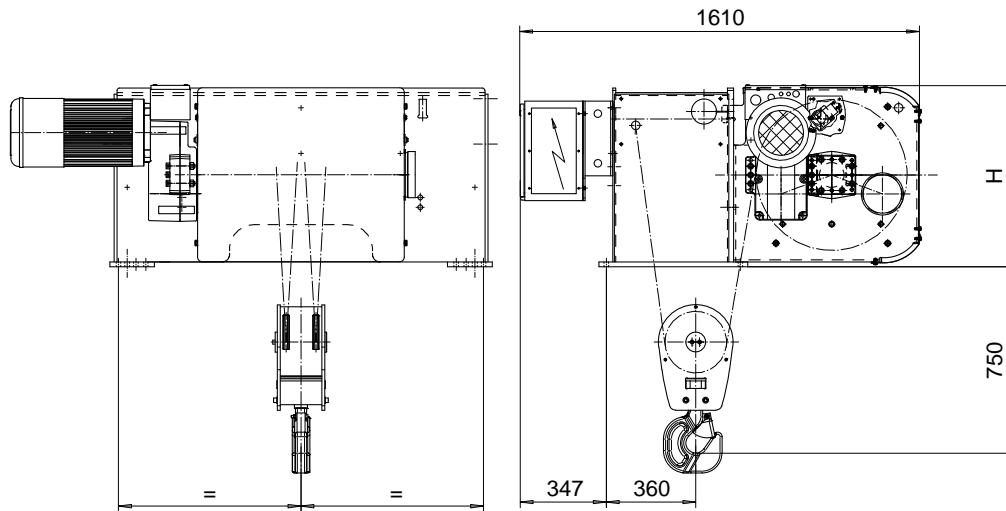


FOOT MOUNT, 2 PART DOUBLE
Hoist type:
SX6 022...F0

SI-60Hz



Motor	P6,T6,T7,T8,T9	P7,TA	P8
M1 (mm)	536	576	711

HOL (m)	Length code	M2 (mm)	M3 (mm)	M4 (mm)	H (mm)	Weight (kg)
16.5	E	682	394	1470	730	1400
22	F	832	319	1470	730	1450
29.5	G	1022	224	1470	730	1500
39	H	1272	599	2470	730	1825
52	J	1622	424	2470	730	1925
63.5	K	1922	274	2470	730	2025
77	L	2272	449	3170	830	2475
86.5	M	2522	324	3170	830	2575
98	N	2822	174	3170	830	2675

Load (kg)	Class Fem/ISO	Hoisting motor				
		Hoisting speed (m/min): Gear code				
		9.6/1.6 : E	12/2 : F	15/2.4 : G	19 : H	24: J
6300	3m/M6	P6,T6	P6,T6	P7,T7	T8	T9
8000	2m/M5	P6,T6	P6,T6	P7,T7	T8	T9
10000	1Am/M4	P6,T6	P7,T7	P8,T8	T9	TA

This document is the absolute property of R&M Materials Handling, Inc. This document must not be copied without the written permission of R&M Materials Handling, Inc. The contents thereof must not be disclosed to a third party nor be used for any unauthorized purpose. Contravention will be prosecuted.

ETFPAL Design 2002-09-02 Date	ETFPAL Chd Appd	Ref Drawing	QD-F-22
SLEQDOCV Owner Dept	HOIST; FIXED 2x2 ROPE FALLS		1 of 13 Folder
R&M MATERIALS HANDLING, INC. HOIST & CRANE PRODUCTS SHELLEBURGH, OHIO	D002152-A		Issue 6