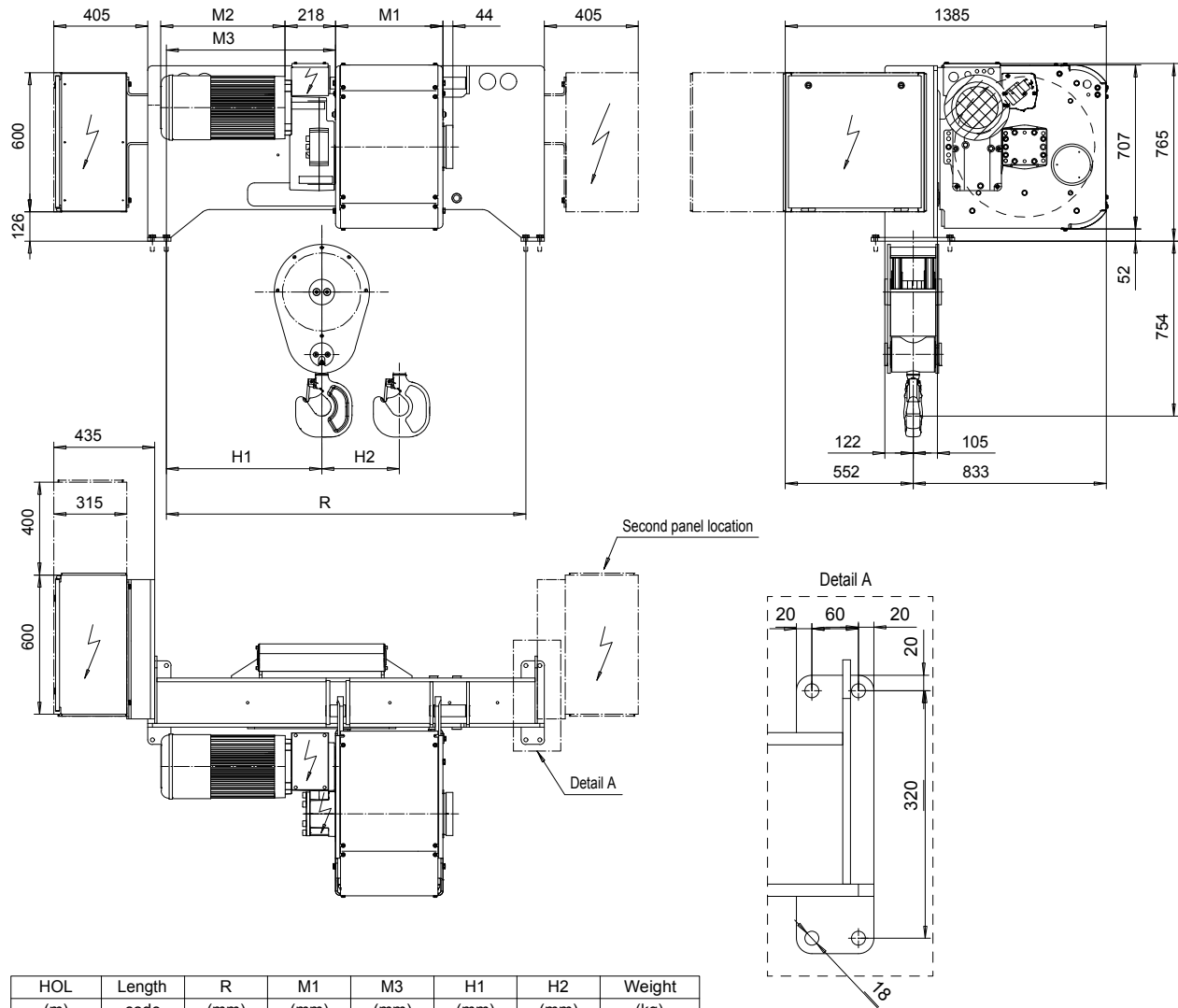


FOOT MOUNT, 4 PART SINGLE
Hoist type:
SX6 041...F0

SI-60Hz



HOL (m)	Length code	R (mm)	M1 (mm)	M3 (mm)	H1 (mm)	H2 (mm)	Weight (kg)
7.5	C	1550	462	730	691	69	1300
10.5	D	1550	562	730	691	94	1300
14	E	1780	682	560	521	125	1400
18	F	1780	832	560	521	161	1400
23.5	G	2290	1022	640	601	210	1600
30.5	H	2290	1272	640	601	273	1700
40	J	2699	1622	810	771	360	1900
48.5	K	2699	1922	810	771	434	2100

Load (kg)	Class Fem/ISO	Hoisting motor				
		Hoisting speed (m/min): Gear code				
		4.8/0.7 :	6/1 : F	7.5/1.3 :	9.5 : H	12 : J
12500	3m/M6	P6,T6	P6,T6	P7,T7	T8	T9
16000	2m/M5	P6,T6	P6,T6	P7,T7	T8	T9
20000	1Am/M4	P6,T6	P7,T7	P8,T8	T9	TA

Motor	P6,T6,T7,T8,T9	P7,TA	P8
M2 (mm)	536	576	711
Wgt (kg)	81	106	106

Hoist weight calculated with P6 motor weight.

This document is the absolute property of R&M Materials Handling, Inc. This document must not be copied without the written permission of R&M Materials Handling, Inc. The contents thereof must not be disclosed to a third party nor be used for any unauthorized purpose. Contravention will be prosecuted.

ETTPAL Design	ETTPAL Chd	Appd	Ref Drawing	QD-F-04
2002-09-02 Date	HOIST; FIXED			
SLEIDDCCV Owner Dept	4 ROPE FALLS			
R&M MATERIALS HANDLING INC.	D006937-A			
ISSM MATERIALS HANDLING, INC. HOIST & CRANE PRODUCTS SPRINGFIELD, OHIO	1/13 Folder			
	Issue 1/2011			