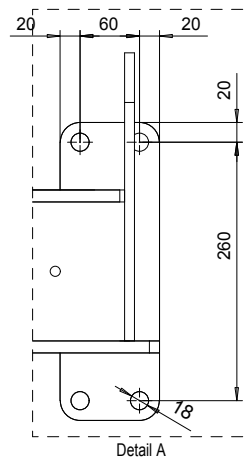
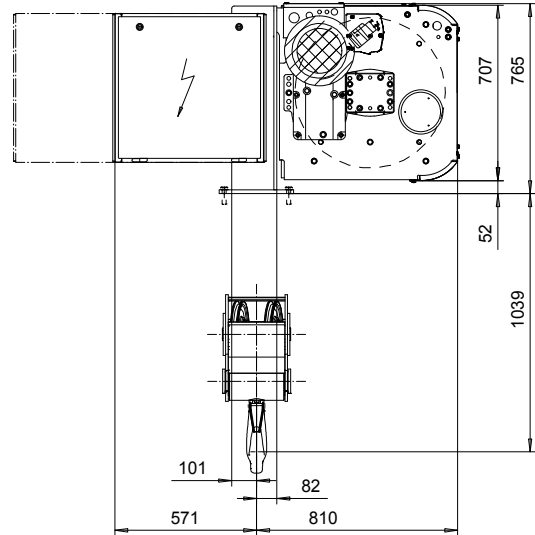
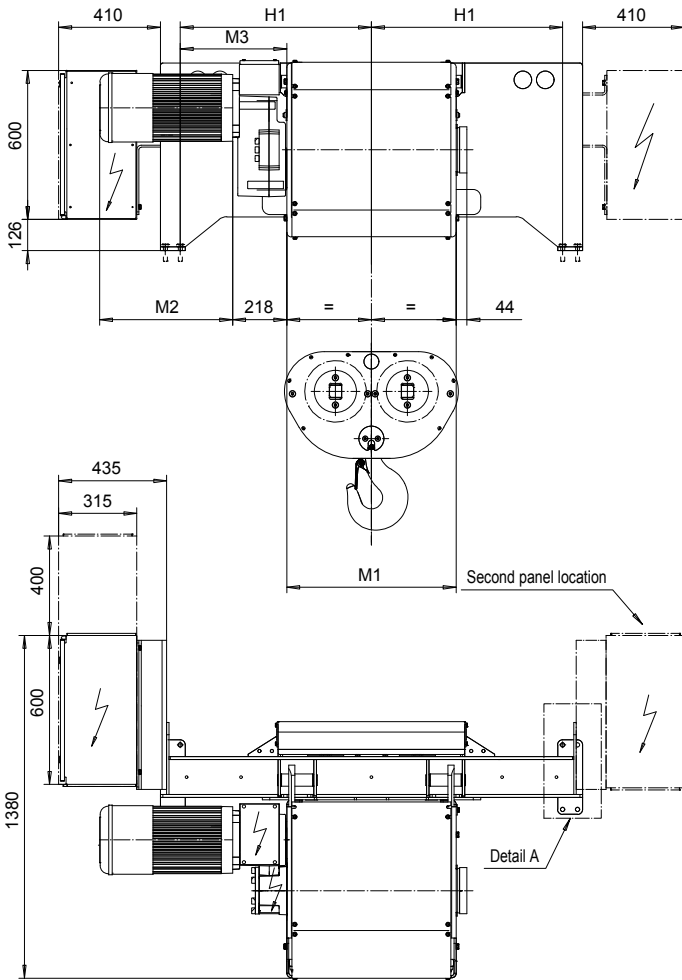


FOOT MOUNT, 4 PART DOUBLE
Hoist type:
SX6 042...F0

SI-60Hz



HOL (m)	Length code	M1 (mm)	M3 (mm)	H1 (mm)	Weight (kg)
8	E	682	429	770	1300
11	F	832	354	770	1300
14.5	G	1022	259	770	1400
19.5	H	1272	434	1070	1600
26	J	1622	259	1070	1700
31.5	K	1922	134	1095	1900
38.5	L	2272	-40	1095	2000
43	M	2522	109	1370	2200
49	N	2822	-40	1370	2400

Load (kg)	Class Fem/ISO	Hoisting motor				
		Hoisting speed (m/min): Gear code				
		4.8/0.8 : E	6/1 : F	7.5/1.3 : G	9.5 : H	12 : J
12500	3m/M6	P6,T6	P6,T6	P7,T7	T8	T9
16000	2m/M5	P6,T6	P6,T6	P7,T7	T8	T9
20000	1Am/M4	P6,T6	P7,T7	P8,T8	T9	TA

Motor	P6,T6,T7,T8,T9	P7,TA	P8
M2 (mm)	536	576	711
Wgt (kg)	81	106	106

Hoist weight calculated with P6 motor weight.

This document is the absolute property of R&M Materials Handling, Inc. This document must not be copied without the written permission of R&M Materials Handling, Inc. The contents thereof must not be disclosed to a third party nor be used for any unauthorized purpose. Contravention will be prosecuted.

ETTPAL Design	ETTPAL Chd	Appd	Ref Drawing	QD-F-24
2002-09-03 Date	HOIST; FIXED			
SLEODOCV Owner Dept	2x4 ROPE FALLS			
R&M MATERIALS HANDLING INC.	R&M MATERIALS HANDLING INC. HOIST & CRANE PRODUCTS SPRINGFIELD, OHIO	D006941-A		1/13 Folder
Issue				1/2011