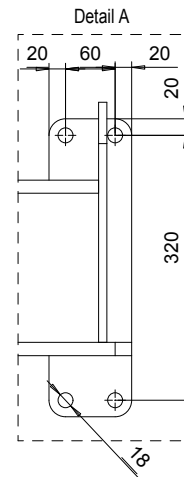
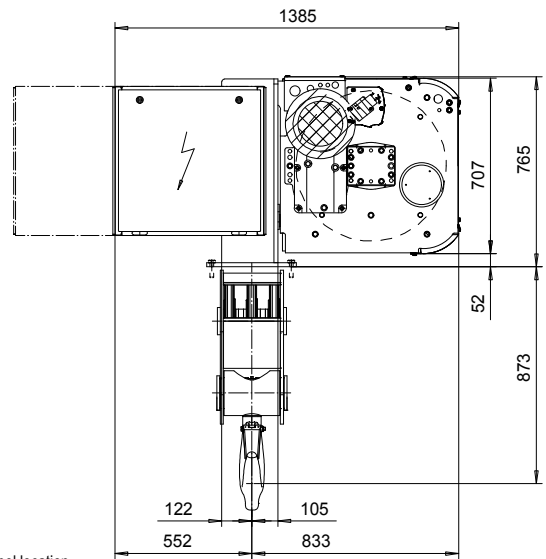
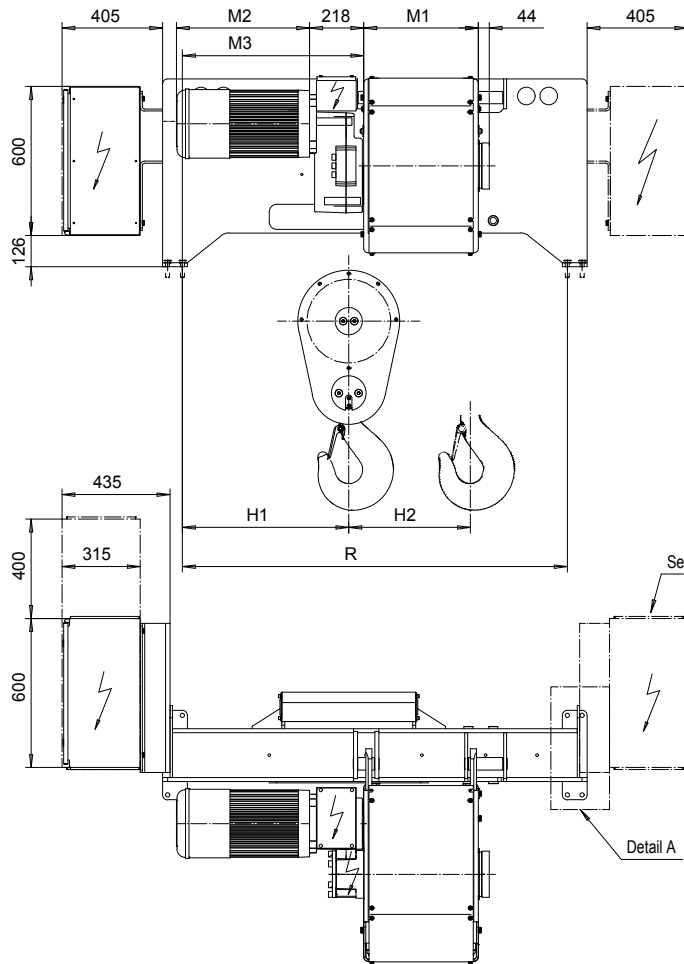


FOOT MOUNT, 6 PART SINGLE

Hoist type:

SX6 061...F0

SI-60Hz



HOL (m)	Length code	R (mm)	M1 (mm)	M3 (mm)	H1 (mm)	H3 (mm)	Weight (kg)
5	C	1550	462	730	691	46	1300
7	D	1550	562	730	691	63	1400
9	E	1780	682	560	521	84	1500
12	F	1780	832	560	521	107	1500
15.5	G	2290	1022	640	601	140	1600
20	H	2290	1272	640	601	182	1800
26.5	J	2699	1622	810	771	240	2000
32	K	2699	1922	810	771	289	2100

Load (kg)	Class Fem/ISO	Hoisting motor				
		Hoisting speed (m/min): Gear code				
		3/0.5 : E	3.8/0.6 : F	4.8/0.8 : G	6 : H	7.5 : J
20000	3m/M6	P6,T6	P6,T6	P7,T7	T8	T9
25000	2m/M5	P6,T6	P6,T6	P7,T7	T8	T9
30000	1Am/M4	P6,T6	P7,T7	P8,T8	T9	TA

Motor	P6,T6,T7,T8,T9	P7,TA	P8
M2 (mm)	536	576	711
Wgt (kg)	81	106	106

Hoist weight calculated with P6 motor weight.

This document is the absolute property of R&M Materials Handling, Inc. This document must not be copied without the written permission of R&M Materials Handling, Inc. The contents thereof must not be disclosed to a third party nor be used for any unauthorized purpose. Contravention will be prosecuted.

ETTPAL Design	ETTPAL Chd	Appd	Ref Drawing	QD-F-06
2002-09-02 Date	HOIST; FIXED			1:13
SLEODOCV Owner Dept	6 ROPE FALLS			Folder
R&M MATERIALS HANDLING INC.	R&M MATERIALS HANDLING, INC. HOIST & CRANE PRODUCTS SPRINGFIELD, OHIO	D006938-A		Issue 1/2011