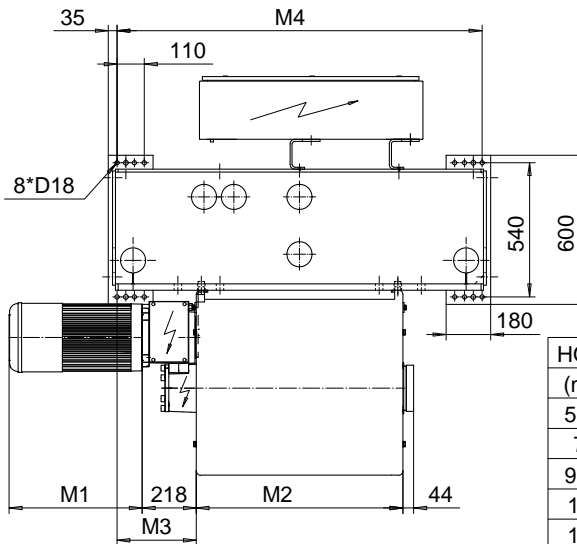
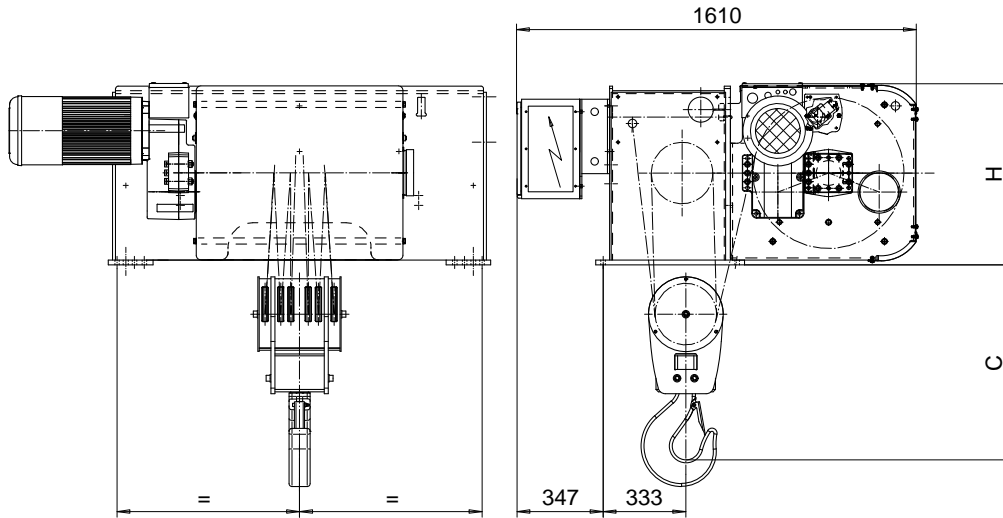


# FOOT MOUNT, 6 PART DOUBLE

SI-60Hz

Hoist type:

SX6 062...F0



|         |                |       |     |
|---------|----------------|-------|-----|
| Motor   | P6,T6,T7,T8,T9 | P7,TA | P8  |
| M1 (mm) | 536            | 576   | 711 |

| HOL (m) | Length code | M2 (mm) | M3 (mm) | M4 (mm) | H (mm) | C (mm) | Weight (kg) |
|---------|-------------|---------|---------|---------|--------|--------|-------------|
| 5.5     | E           | 682     | 394     | 1470    | 730    | 785    | 1500        |
| 7       | F           | 832     | 319     | 1470    | 730    | 785    | 1550        |
| 9.5     | G           | 1022    | 224     | 1470    | 730    | 785    | 1600        |
| 13      | H           | 1272    | 599     | 2470    | 730    | 930    | 1925        |
| 17      | J           | 1622    | 424     | 2470    | 730    | 930    | 2025        |
| 21      | K           | 1922    | 474     | 2470    | 730    | 930    | 2125        |
| 25.5    | L           | 2272    | 449     | 3170    | 830    | 930    | 2575        |
| 28.5    | M           | 2522    | 324     | 3170    | 830    | 930    | 2675        |
| 32.5    | N           | 2822    | 174     | 3170    | 830    | 930    | 2775        |

| Load (kg) | Class Fem/ISO | Hoisting motor                    |            |            |      |        |
|-----------|---------------|-----------------------------------|------------|------------|------|--------|
|           |               | Hoisting speed (m/min): Gear code |            |            |      |        |
|           |               | 3/0.5: E                          | 3.8/0.6: F | 4.8/0.8: G | 6: H | 7.5: J |
| 20000     | 3m/M6         | P6,T6                             | P6,T6      | P7,T7      | T8   | T9     |
| 25000     | 2m/M5         | P6,T6                             | P6,T6      | P7,T7      | T8   | T9     |
| 30000     | 1Am/M4        | P6,T6                             | P7,T7      | P8,T8      | T9   | TA     |

|  |                                      |                   |
|--|--------------------------------------|-------------------|
| ETTPAL<br>Design<br>2002-09-03<br>Date                                       | ETTPAL<br>Chd<br>Appd<br>Ref Drawing | QD-F-26           |
| SLEQDOCV<br>Owner Dept   | HOIST; FIXED<br>2x6 ROPE FALLS       | 1 of 13<br>Folder |
| R&M<br>R&M MATERIALS HANDLING, INC.<br>SHEET & CRANE PRODUCTS<br>SHELDON, WY | D002157-A                            | Issue<br>6        |

This document is the absolute property of R&M Materials Handling, Inc. This document must not be copied without the written permission of R&M Materials Handling, Inc. The contents thereof must not be disclosed to a third party nor be used for any unauthorized purpose. Contravention will be prosecuted.