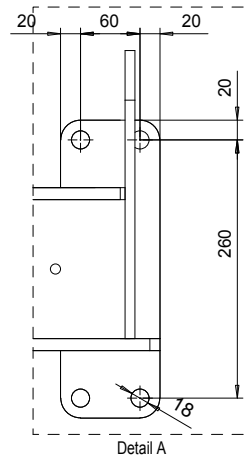
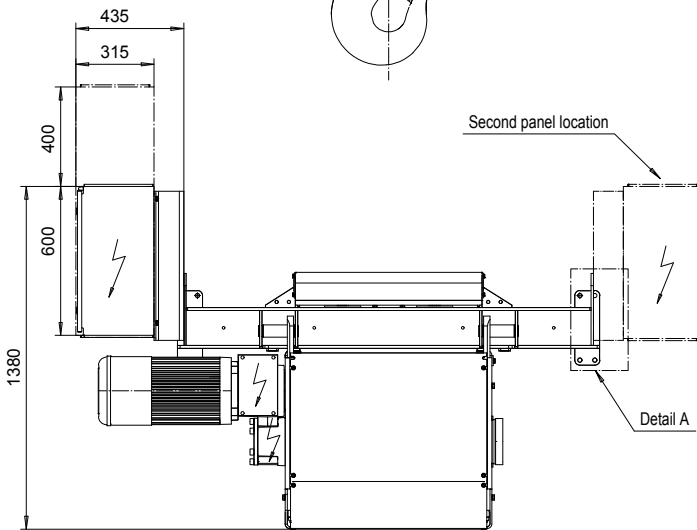
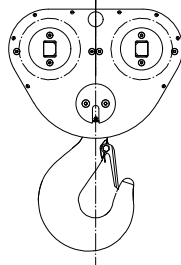
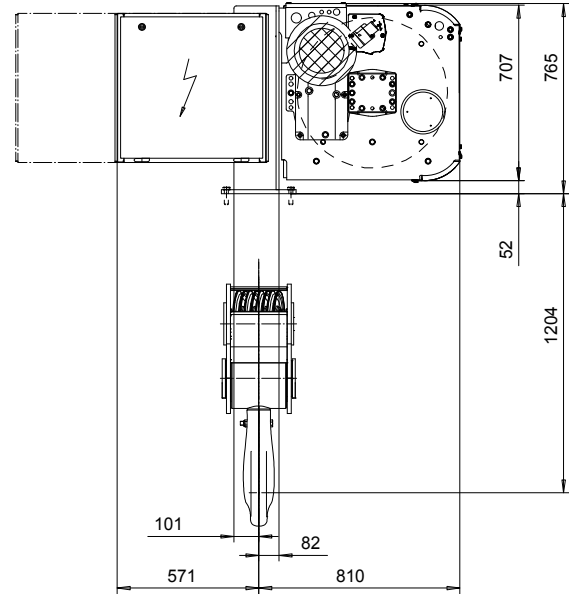
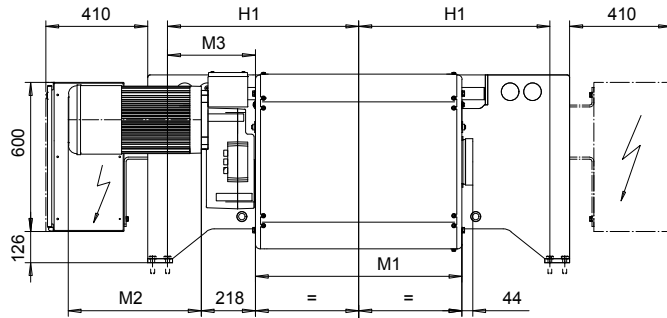


FOOT MOUNT, 8 PART DOUBLE

Hoist type:

SI-60Hz

SX6 082...F0



HOL (m)	Length code	M1 (mm)	M3 (mm)	H1 (mm)	Weight (kg)
5.5	F	832	354	770	1500
7	G	1022	259	770	1600
9.5	H	1272	434	1070	1800
13	J	1622	259	1070	1900
15.5	K	1922	134	1095	2100
19	L	2272	-40	1095	2200
21.5	M	2522	109	1370	2400
24.5	N	2822	-40	1370	2600

Motor	P6,T6,T7,T8,T9	P7,TA	P8
M2 (mm)	536	576	711
Wgt (kg)	81	106	106

Load (kg)	Class Fem/ISO	Hoisting motor					
		Hoisting speed (m/min): Gear code					
		2.4/0.4: E	3/0.5: F	3.8/0.6: G	3.8: G	4.8: H	6: J
32000	2m/M5	P6,T6	P7,T7	---	T8	T9	TA
40000	1Am/M4	P6,T6	P7,T7	P8	T8	T9	TA

Hoist weight calculated with P6 motor weight.

This document is the absolute property of R&M Materials Handling, Inc. This document must not be copied without the written permission of R&M Materials Handling, Inc. The contents thereof must not be disclosed to a third party nor be used for any unauthorized purpose. Contravention will be prosecuted.

ETTPAL Design	KHHMKH Chd	Appl	Ref Drawing	QD-F-28
2002-09-03 Date	HOIST; FIXED			
SLEQDQCV Owner Dept	2x8 ROPE FALLS			
R&M MATERIALS HANDLING INC.	R&M MATERIALS HANDLING INC. HOIST & CRANE PRODUCTS SPRINGFIELD, OHIO	D006943-A		1-13 Folder Issue 1/2011