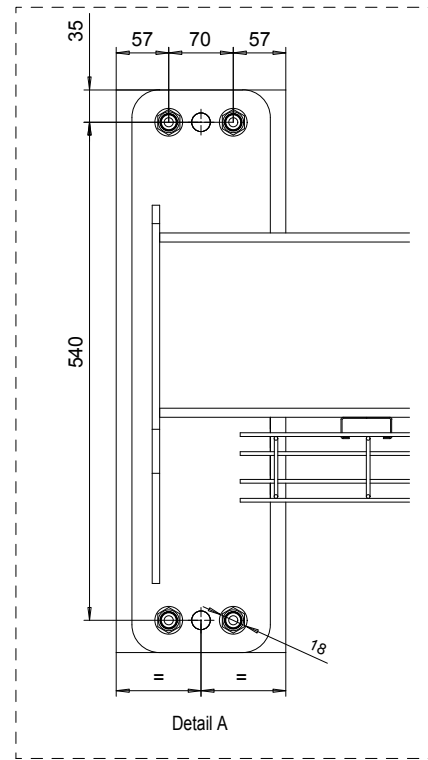
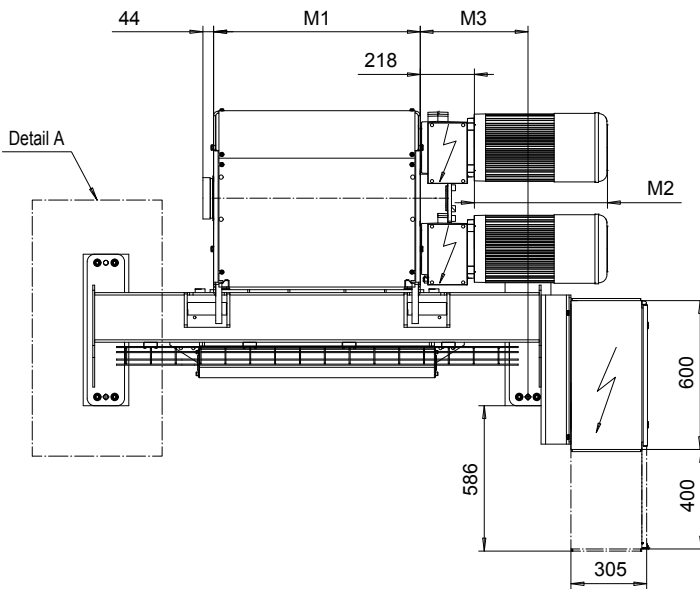
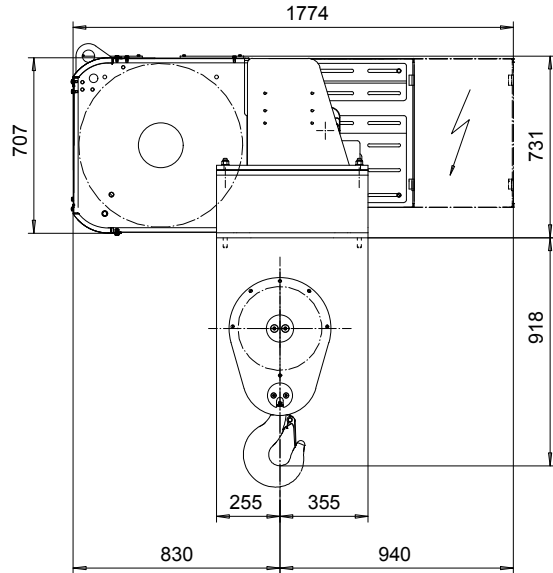
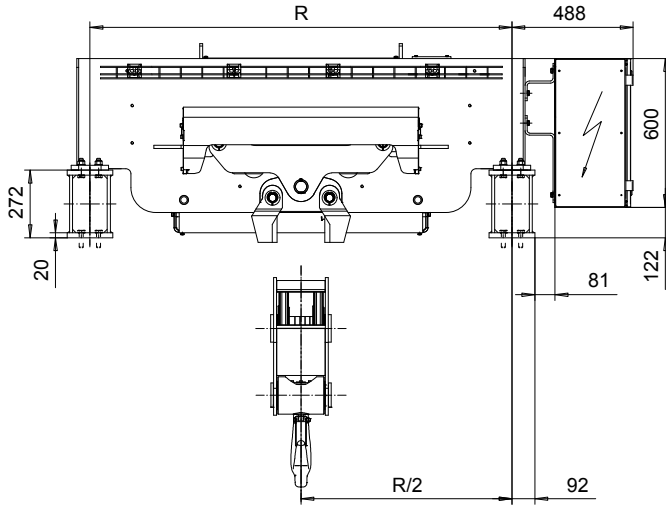


FOOT MOUNT, 2 PART DOUBLE

Hoist type:

SX7 022...F0

SI-60Hz



Load (kg)	Class Fem/ISO	Hoisting motor				
		Hoisting speed (m/min): Gear code				
		9.6/1.4: E	12/1.9: F	15/2.4: G	19.2: H	24: J
12500	3m/M6	P6,T6	P6,T6	P7,T7	T8	T9
16000	2m/M5	P6,T6	P6,T6	P7,T7	T8	T9
20000	1Am/M4	P6,T6	P7,T7	T8	T9	-

HOL (m)	Length code	M2 (mm)	M3 (mm)	R (mm)	Weight (kg)
15.5	F	832	434	1700	1400
20.5	G	1022	339	1700	1500
27.5	H	1272	565	2400	1600
37.5	J	1622	389	2400	1800
46	K	1922	339	3100	2000
55.5	L	2272	414	3100	2200
62.5	M	2522	840	3800	2400
71	N	2822	690	3800	2600

Motor	P6,T6,T7,T8	P7	T9
M2 (mm)	536	576	536
Wgt (kg)	85	105	92

Hoist weight calculated with P6 motor weight.

This document is the absolute property of R&M Materials Handling, Inc. This document must not be copied without the written permission of R&M Materials Handling, Inc. The contents thereof must not be disclosed to a third party nor be used for any unauthorized purpose. Contravention will be prosecuted.

ETTPAL Design	ETTPAL Chd	Appd	Ref Drawing	QE-F-22
2003-01-13 Date	HOIST; FIXED			
SLEDDOCV Owner Dept	2x2 ROPE FALLS			
R&M MATERIALS HANDLING INC.	R&M MATERIALS HANDLING INC.	D006944-A		
HOIST & CRANE PRODUCTS SPRINGFIELD, OHIO	1/2011			