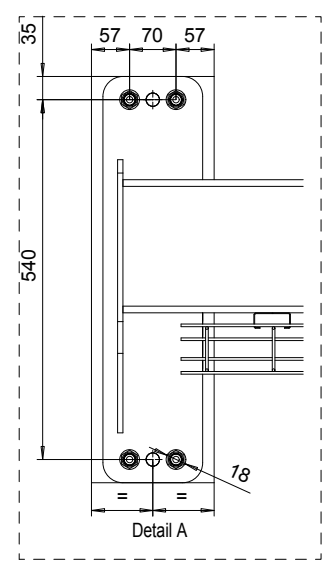
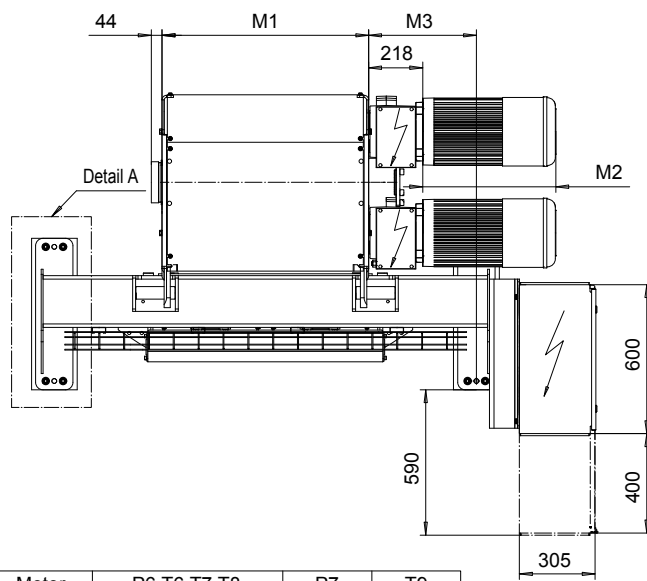
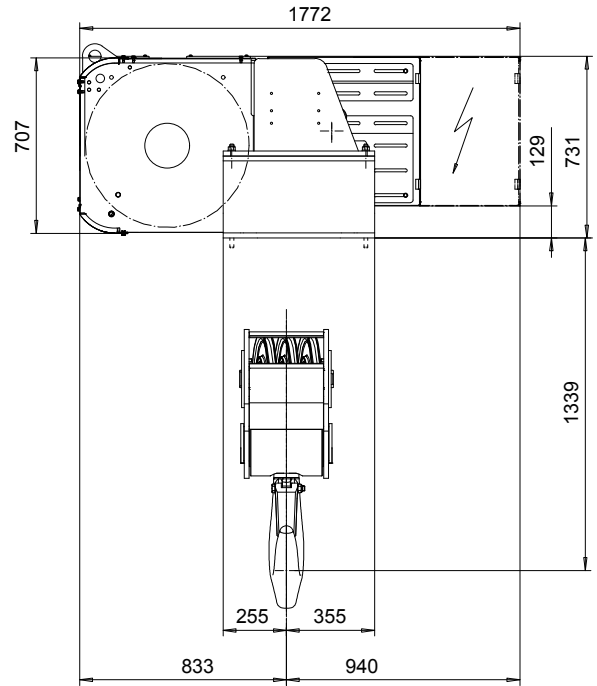
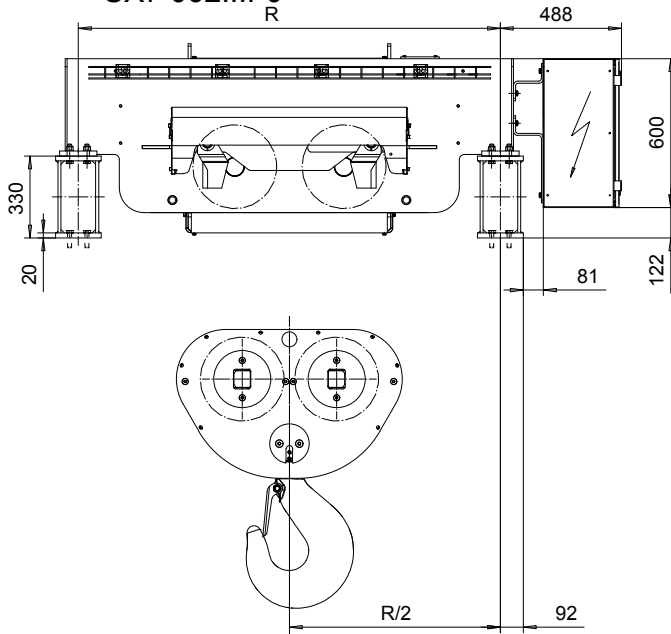


# FOOT MOUNT, 6 PART DOUBLE

Hoist type:

SX7 062...F0  
R

SI-60Hz



Motor	P6, T6, T7, T8	P7	T9
M2 (mm)	536	576	536
Wgt (kg)	85	105	92

HOL (m)	Length code	M1 (mm)	M3 (mm)	R (mm)	Weight (kg)
5	F	832	434	1700	1600
6.5	G	1022	339	1700	1700
9	H	1272	565	2400	1900
12.5	J	1622	389	2400	2000
15	K	1922	339	3100	2400
18.5	L	2272	414	3100	2600
20.5	M	2522	840	3800	3000
23.5	N	2822	690	3800	3100

Load (kg)	Class Fem/ISO	Hoisting motor				
		Hoisting speed (m/min): Gear code				
		3/0.5: E	3.8/0.6: F	4.8/0.7: G	6: H	7.5: J
40000	3m/M6	P6, T6	P6, T6	P7, T7	T8	T9
50000	2m/M5	P6, T6	P6, T6	P7, T7	T8	T9
60000	1Am/M4	P6, T6	P7, T7	T8	T9	-

Hoist weight calculated with P6 motor weight.

This document is the absolute property of R&M Materials Handling, Inc. This document must not be copied without the written permission of R&M Materials Handling, Inc. The contents thereof must not be disclosed to a third party nor be used for any unauthorized purpose. Contravention will be prosecuted.

ETTPAL Design	ETTPAL Chd	Appd	Ref Drawing	QE-F-26
2003-01-13 Date	HOIST; FIXED			
SLEQDQCV Owner Dept	2X6 ROPE FALLS			
R&M MATERIALS HANDLING INC.	R&M MATERIALS HANDLING INC. HOIST & CRANE PRODUCTS SPRINGFIELD, OHIO	D006946-A		1:13 Folder
				Issue 1/2011