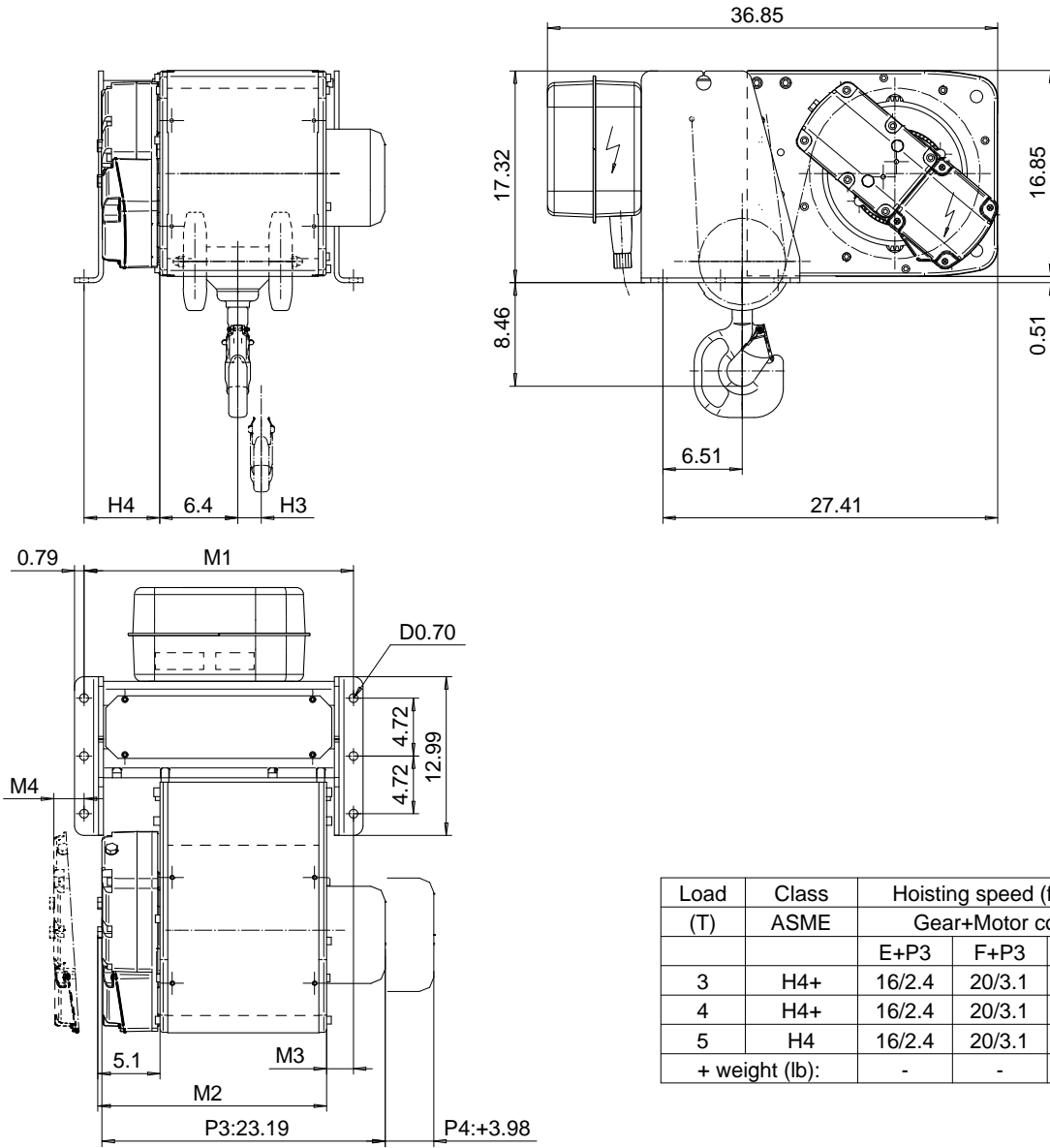


**FOOT MOUNT, 4 PART SINGLE**  
**Hoist type:**  
**SX4 041...F0**

**US-60Hz**



Load (T)	Class ASME	Hoisting speed (ft/min)		
		Gear+Motor code:		
		E+P3	F+P3	H+P4
3	H4+	16/2.4	20/3.1	30/4.9
4	H4+	16/2.4	20/3.1	30/4.9
5	H4	16/2.4	20/3.1	30/4.9
+ weight (lb):		-	-	40

HOL (ft)	Length code	M1 (inch)	M2 (inch)	M3 (inch)	M4 (inch)	H3 (inch)	H4 (inch)	Weight (lb)
19'-8"	B	22.04	18.38	2.20	-1.45	1.92	6.18	400
29'-6"	C	22.04	22.32	2.20	2.48	2.87	2.24	420
39'-4"	D	30.70	26.25	6.92	2.48	3.81	2.24	440
49'-2"	E	30.70	30.98	2.20	2.48	5.00	2.24	460

This document is the absolute property of R&M Materials Handling, Inc. This document must not be copied without the written permission of R&M Materials Handling, Inc. The contents thereof must not be disclosed to a third party nor be used for any unauthorized purpose. Contravention will be prosecuted.

CSDPAL Design	CSDPAL Title	Appd	Ref Drawing	QB-F-04
2002-08-27 Date	HOIST; FIXED 4 ROPE FALLS			1 of 3 Total
SLEQEN01 Owner Dept	R&M MATERIALS HANDLING, INC. ROPE & CABLE SERVICES SHEWAN, USA			DRAWN
	D002091-A			3