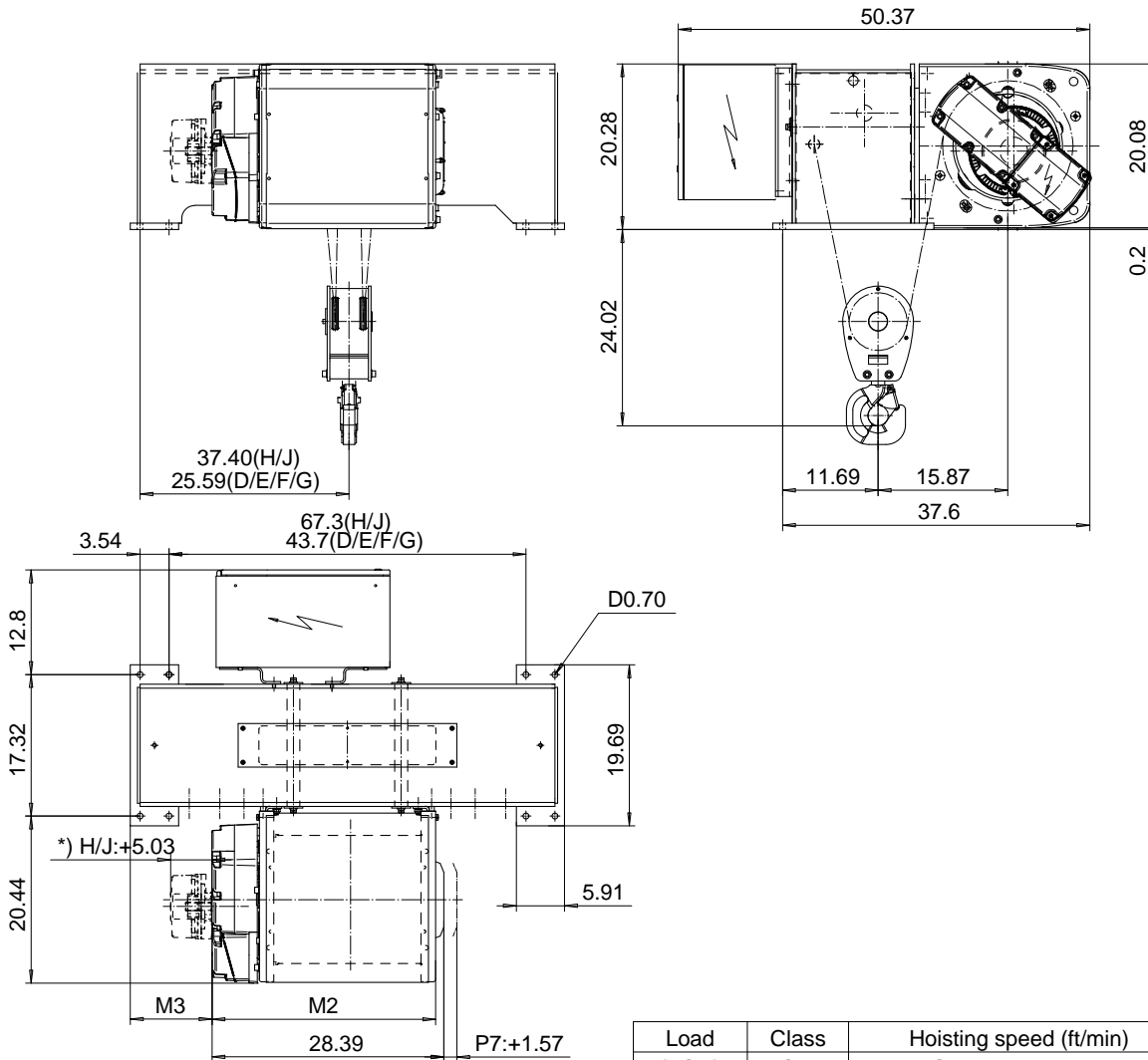


FOOT MOUNT, 2 PART DOUBLE

Hoist type:

SX5 022...F0

US-60Hz



Load (TON)	Class ASME	Hoisting speed (ft/min)		
		Gear+Motor code:		
		F+P5	H+P6	J+P7
4	H4+	40/6.7	60/9.8	80/12.5
5	H4	40/6.7	60/9.8	80/12.5
+ weight (lb):		-	60	80

HOL (ft)	Length code	M2 (inch)	M3 (inch)	Weight (lb)
27'-10"	D	27.40	9.96	760
42'-7"	E	32.12	7.59	880
59'-0"	F	38.03	4.64	900
82'-0"	G	45.51	0.90	980
109'-10"	H	55.35	7.79	1210
150'-11"	J	69.13	0.90	2000

Primary brake is mounted on gearcase for drum lengths H and J.

This document is the absolute property of R&M Materials Handling, Inc. This document must not be copied without the written permission of R&M Materials Handling, Inc. The contents thereof must not be disclosed to a third party nor be used for any unauthorized purpose. Contravention will be prosecuted.

ETTPAL Design	ETTPAL Chd	Appd	Ref Drawing	QC-F-22
2002-08-30 Date	HOIST; FIXED			1:10 Folder
SLEQDOCV Owner Dept	2x2 ROPE FALLS			Issue
R&M MATERIALS HANDLING, INC. HOIST & CRANE PRODUCTS SARASOTA, FL 34237	D002129-A			4