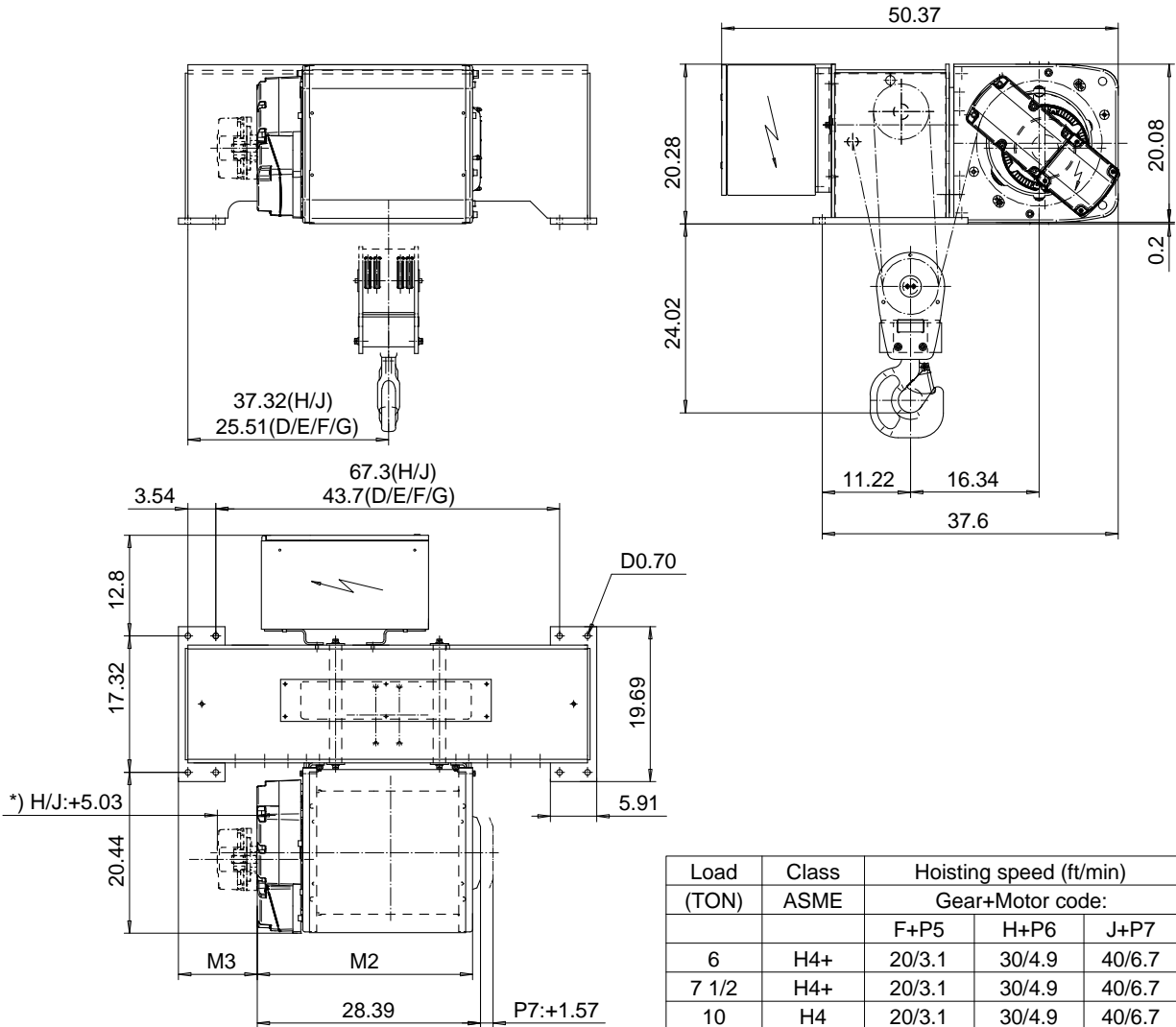


FOOT MOUNT, 4 PART DOUBLE

Hoist type:

SX5 042...F0

US-60Hz



*) H/J:+5.03

Load (TON)	Class ASME	Hoisting speed (ft/min)		
		Gear+Motor code:		
		F+P5	H+P6	J+P7
6	H4+	20/3.1	30/4.9	40/6.7
7 1/2	H4+	20/3.1	30/4.9	40/6.7
10	H4	20/3.1	30/4.9	40/6.7
+ weight (lb):		-	60	80

HOL (ft)	Length code	M2 (inch)	M3 (inch)	Weight (lb)
13'-1"	D	27.40	9.96	880
21'-3"	E	32.12	7.59	1000
29'-6"	F	38.03	4.64	1060
41'-0"	G	45.51	0.90	1140
54'-1"	H	55.35	7.79	1370
75'-5"	J	69.13	0.90	2000

Primary brake is mounted on gearcase for drum lengths H and J.

This document is the absolute property of R&M Materials Handling, Inc. This document must not be copied without the written permission of R&M Materials Handling, Inc. The contents thereof must not be disclosed to a third party nor be used for any unauthorized purpose. Contravention will be prosecuted.

ETTPAL Design 2002-08-30 Date	ETTPAL Chd Appd	Ref Drawing	QC-F-24
SLEQDOCV Owner Dept	HOIST; FIXED 2x4 ROPE FALLS		1-10 Folder
R&M MATERIALS HANDLING, INC. HOIST & CRANE PRODUCTS SARASOTA, FL 34237	D002130-A		Issue 4