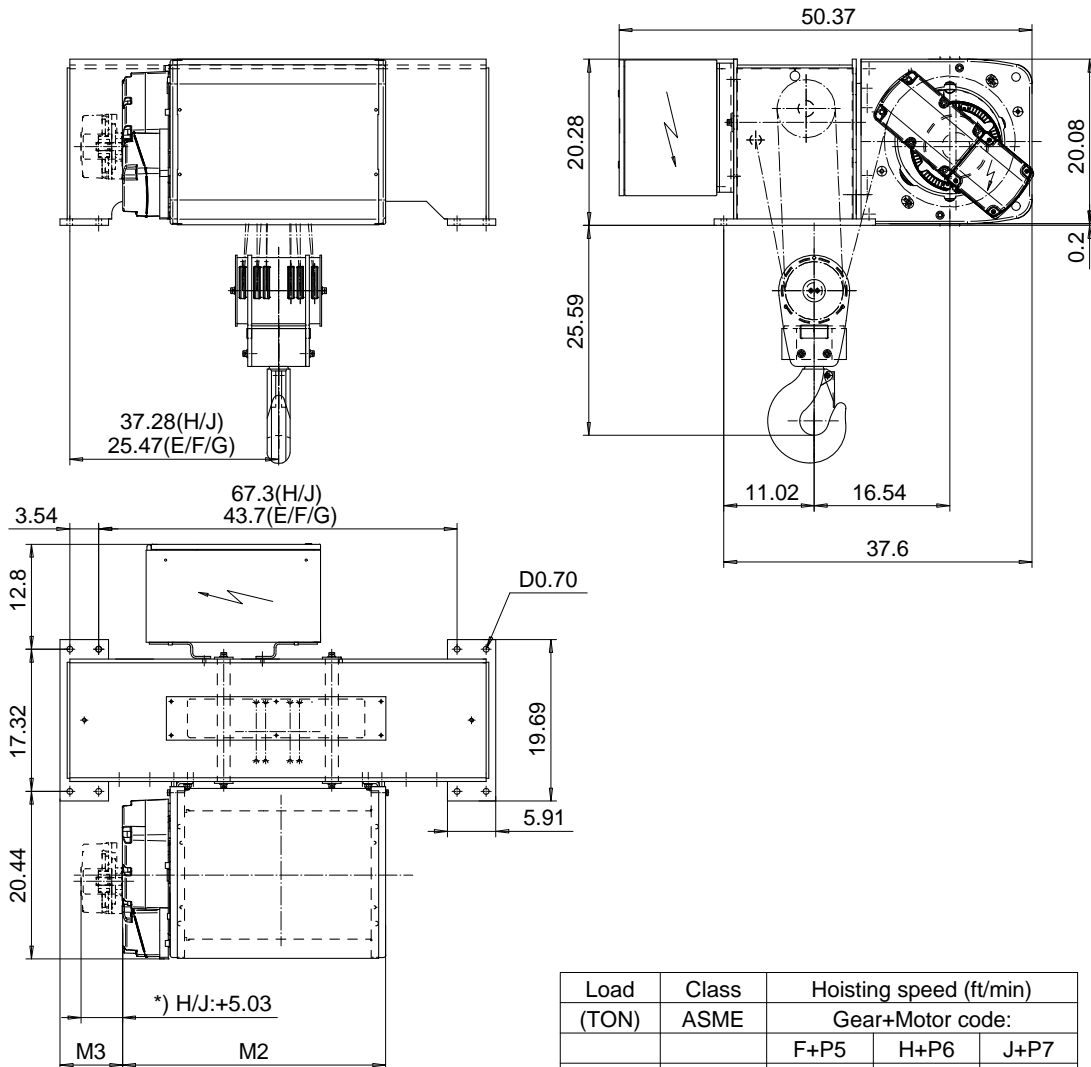


FOOT MOUNT, 6 PART DOUBLE

Hoist type:

SX5 062...F0

US-60Hz



Load (TON)	Class ASME	Hoisting speed (ft/min)		
		Gear+Motor code:		
		F+P5	H+P6	J+P7
12	H4+	12.5/1.9	20/3.1	25/3.9
15	H4	12.5/1.9	20/3.1	25/3.9
+ weight (lb):		-	60	80

HOL (ft)	Length code	M2 (inch)	M3 (inch)	Weight (lb)
13'-1"	E	32.12	7.59	1040
19'-8"	F	38.03	4.64	1060
26'-2"	G	45.51	0.90	1180
36'-1"	H	55.35	7.79	1410
49'-2"	J	69.13	0.90	2000

Primary brake is mounted on gearcase for drum lengths H and J.

This document is the absolute property of R&M Materials Handling, Inc. This document must not be copied without the written permission of R&M Materials Handling, Inc. The contents thereof must not be disclosed to a third party nor be used for any unauthorized purpose. Contravention will be prosecuted.

ETFPAL Design	ETFPAL Chd	Appd	Ref Drawing	QC-F-26
2002-08-30 Date	HOIST; FIXED			1-10
SLEQDOCV Owner Dept	2X6 ROPE FALLS			Folder
R&M MATERIALS HANDLING, INC. HOIST & CRANE PRODUCTS SARASOTA, FL	D002131-A			Issue 4