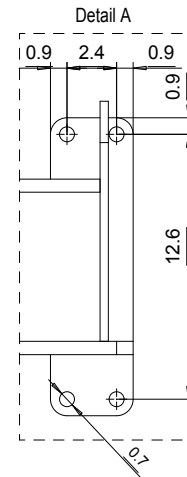
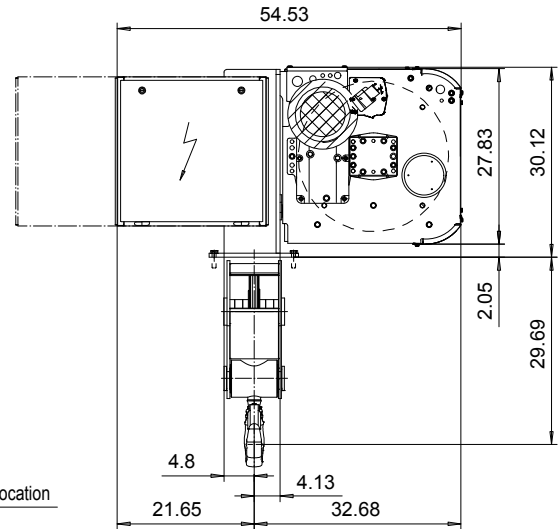
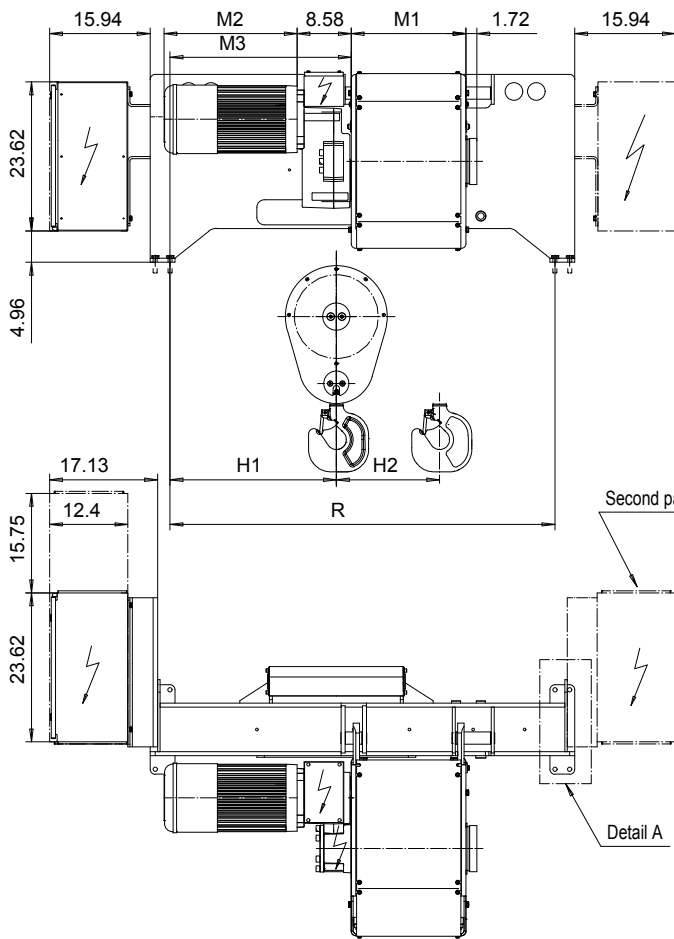


FOOT MOUNT, 2 PART SINGLE
Hoist type:
SX6 021...F0

US-60Hz



HOL (ft)	Length code	R (inch)	M1 (inch)	M3 (inch)	H1 (inch)	H2 (inch)	Weight (lb)
50'-10"	C	61	18.18	28.7	27.2	5.47	2646
68'-10"	D	61	22.12	28.7	27.2	7.40	2867
91'-10"	E	70.1	26.85	22	20.5	9.88	2867
118'-1"	F	70.1	32.75	22	20.5	12.67	3087
154'-2"	G	90.2	40.23	25.2	23.7	16.57	3306
200'-1"	H	90.2	50.07	25.2	23.7	21.49	3528
264'-1"	J	106.3	63.85	31.9	30.4	28.38	4190
318'-2"	K	106.3	75.66	31.9	30.4	34.17	4410

Load (TON)	Class ASME	Hoisting motor					
		Hoisting speed (ft/min): Gear code					
		30/4.9 : E	40/6.7 : F	50/7.8 : G	60 : H	80 : J	
6	H4+	P6,T6	P6,T6	P7,T7	T8	T9	
7 1/2	H4	P6,T6	P6,T6	P7,T7	T8	T9	
10	H3	P6,T6	P7,T7	P8,T8	T9	TA	

Motor	P6,T6,T7,T8,T9	P7,TA	P8
M2 (inch)	21.10	22.67	27.99
Wgt (lb)	179	234	234

Hoist weight calculated with P6 motor weight.

This document is the absolute property of R&M Materials Handling, Inc. This document must not be copied without the written permission of R&M Materials Handling, Inc. The contents thereof must not be disclosed to a third party nor be used for any unauthorized purpose. Contravention will be prosecuted.

ETTPAL Design	ETTPAL Chd	Appd	Ref Drawing	QD-F-02
2002-09-02 Date	HOIST; FIXED			
SLEQDQCV Owner Dept	2 ROPE FALLS			
R&M MATERIALS HANDLING INC.	R&M MATERIALS HANDLING INC.	HOIST & CRANE PRODUCTS SPRINGFIELD, OHIO		D006936-A
				1:13 Folder
				Issue 1/2011