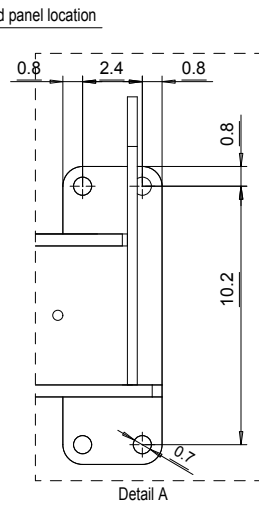
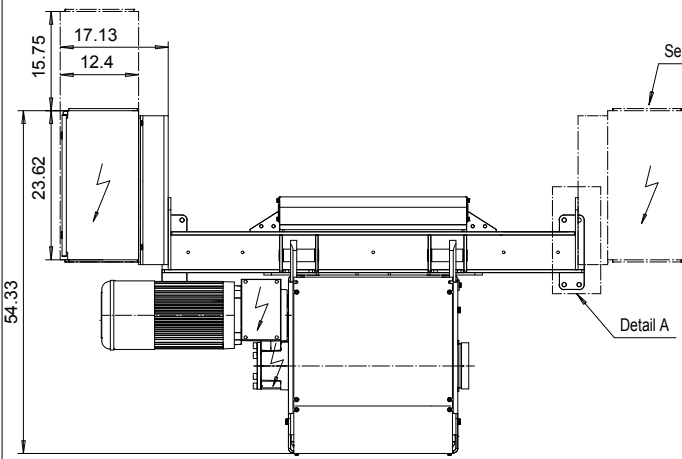
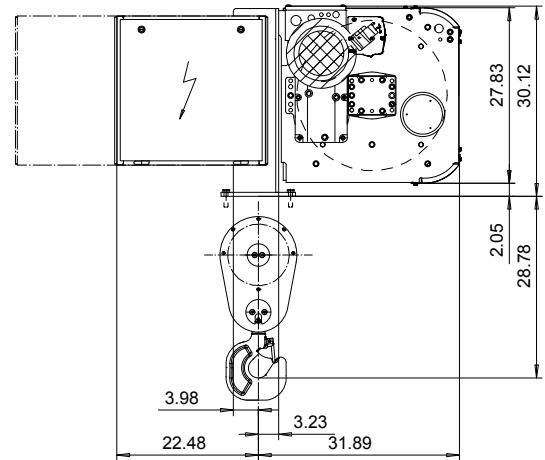
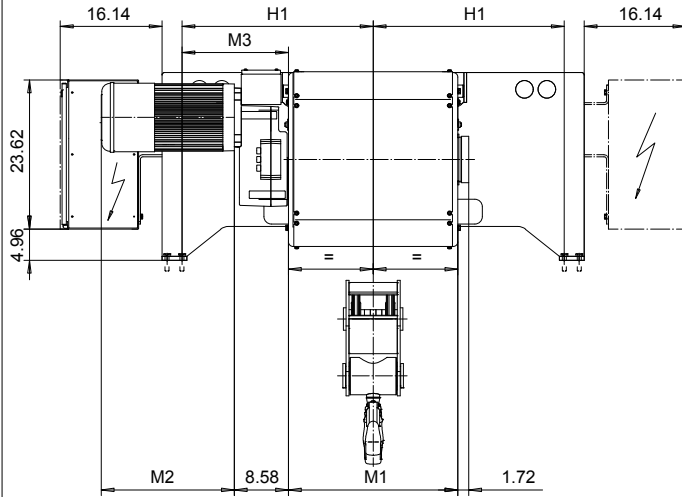


**FOOT MOUNT, 2 PART DOUBLE**  
**Hoist type:**  
**SX6 022...F0**

**US-60Hz**



HOL (ft)	Length code	M1 (inch)	M3 (inch)	H1 (inch)	Weight (lb)
54'-2"	E	26.85	16.9	30.3	2646
72'-2"	F	32.75	13.9	30.3	2867
96'-9"	G	40.23	10.2	30.3	2867
127'-11"	H	50.07	17.1	42.1	3308
170'-7"	J	63.85	10.2	42.1	3528
208'-4"	K	75.66	5.3	43.1	3969
252'-7"	L	89.44	-1.6	43.1	4410
283'-10"	M	99.29	4.3	53.9	4851
321'-6"	N	111.10	-1.6	53.9	5072

Motor	P6,T6,T7,T8,T9	P7,TA	P8
M2 (inch)	21.10	22.67	27.99
Wgt (lb)	179	234	234

Load (TON)	Class ASME	Hoisting motor				
		Hoisting speed (ft/min): Gear code				
		30/4.9 : E	40/6.7 : F	50/7.8 : G	60 : H	80 : J
6	H4+	P6,T6	P6,T6	P7,T7	T8	T9
7 1/2	H4	P6,T6	P6,T6	P7,T7	T8	T9
10	H3	P6,T6	P7,T7	P8,T8	T9	TA

Hoist weight calculated with P6 motor weight.

This document is the absolute property of R&M Materials Handling, Inc. This document must not be copied without the written permission of R&M Materials Handling, Inc. The contents thereof must not be disclosed to a third party nor be used for any unauthorized purpose. Contravention will be prosecuted.

ETTPAL Design	ETTPAL Ctd	Appd	Ref Drawing	QD-F-22
2002-09-02 Date	HOIST; FIXED			1:13
SLEODOCV Owner Dept	2x2 ROPE FALLS			Folder
R&M MATERIALS HANDLING INC.	R&M MATERIALS HANDLING INC. HOIST & CRANE PRODUCTS SPRINGFIELD, OHIO	D006940-A		Issue 1/2011