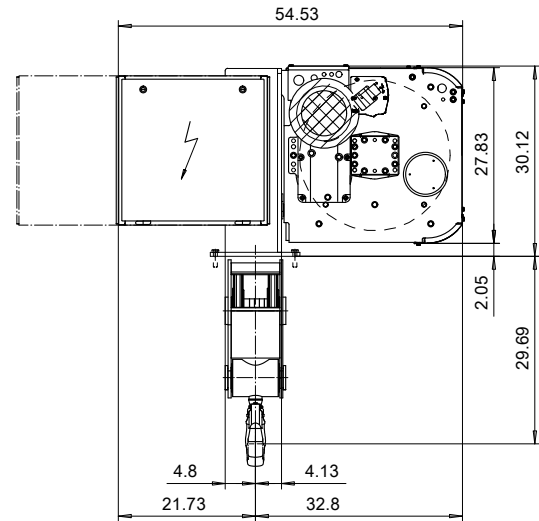
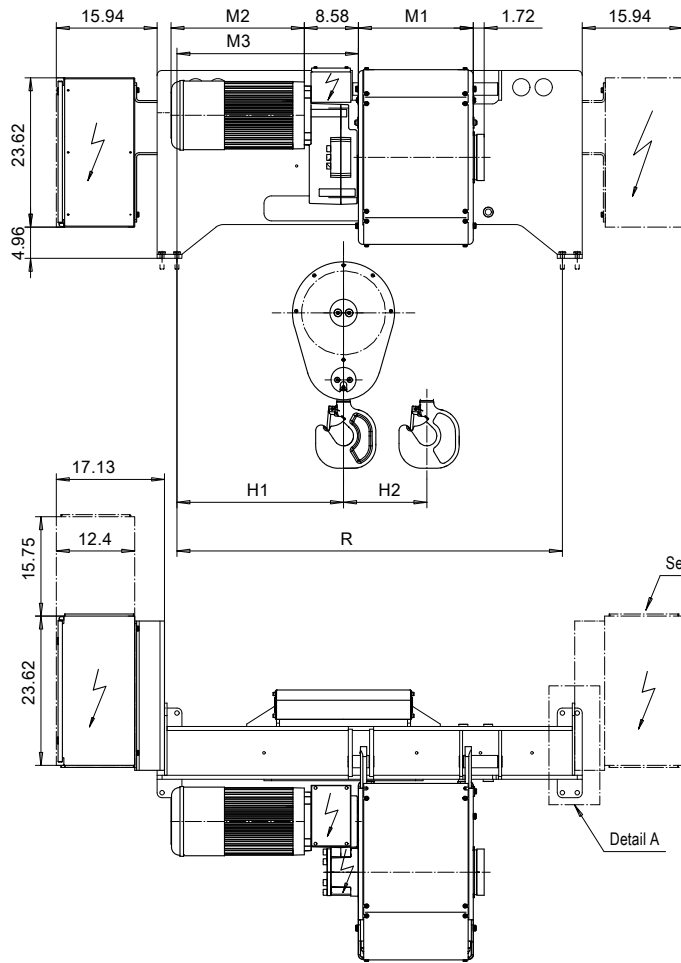


**FOOT MOUNT, 4 PART SINGLE**  
**Hoist type:**  
**SX6 041...F0**

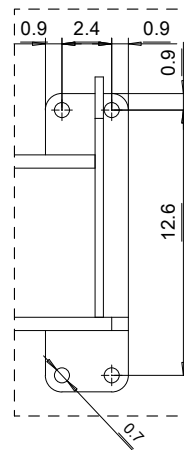
**US-60Hz**



Second panel location

Detail A

Detail A



HOL (ft)	Length code	R (inch)	M1 (inch)	M3 (inch)	H1 (inch)	H2 (inch)	Weight (lb)
24'-6"	C	61	18.18	28.7	27.2	2.71	2867
34'-5"	D	61	22.12	28.7	27.2	3.70	2867
45'-11"	E	70.1	26.85	22	20.5	4.92	3087
59'-0"	F	70.1	32.75	22	20.5	6.33	3087
77'-1"	G	90.2	40.23	25.2	23.7	8.26	3528
100'-0"	H	90.2	50.07	25.2	23.7	10.74	3749
131'-2"	J	106.3	63.85	31.9	30.4	14.17	4190
159'-1"	K	106.3	75.66	31.9	30.4	17.08	4631

Load (TON)	Class	Hoisting motor				
		Hoisting speed (ft/min): Gear code				
	ASME	16/2.4 : E	20/3.1 : F	25/3.9 : G	30 : H	40 : J
12 1/2	H4+	P6,T6	P6,T6	P7,T7	T8	T9
15	H4	P6,T6	P6,T6	P7,T7	T8	T9
20	H3	P6,T6	P7,T7	P8,T8	T9	TA

Motor	P6,T6,T7,T8,T9	P7,TA	P8
M2 (inch)	21.10	22.67	27.99
Wgt (lb)	179	234	234

Hoist weight calculated with P6 motor weight.

This document is the absolute property of R&M Materials Handling, Inc. This document must not be copied without the written permission of R&M Materials Handling, Inc. The contents thereof must not be disclosed to a third party nor be used for any unauthorized purpose. Contravention will be prosecuted.

ETTPAL Design	ETTPAL Cnd	Appd	Ref Drawing	QD-F-04
2002-09-02 Date	HOIST; FIXED			
SLEGGOCV Owner Dept	4 ROPE FALLS			
R&M MATERIALS HANDLING INC.	R&M MATERIALS HANDLING INC. HOIST & CRANE PRODUCTS SPRINGFIELD, OHIO	D006937-A		Issue 1/2011