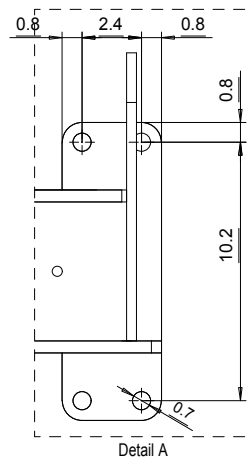
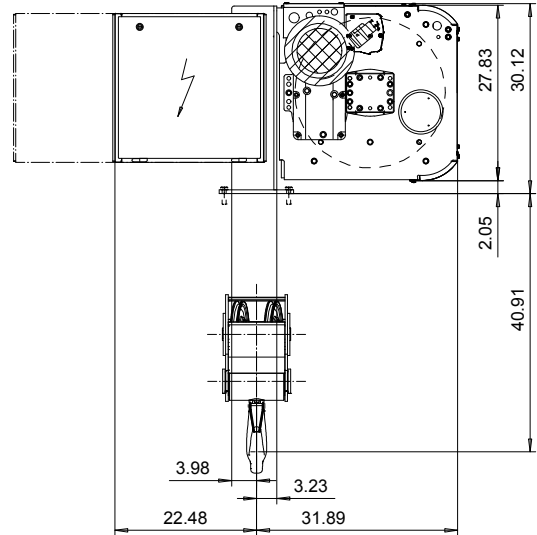
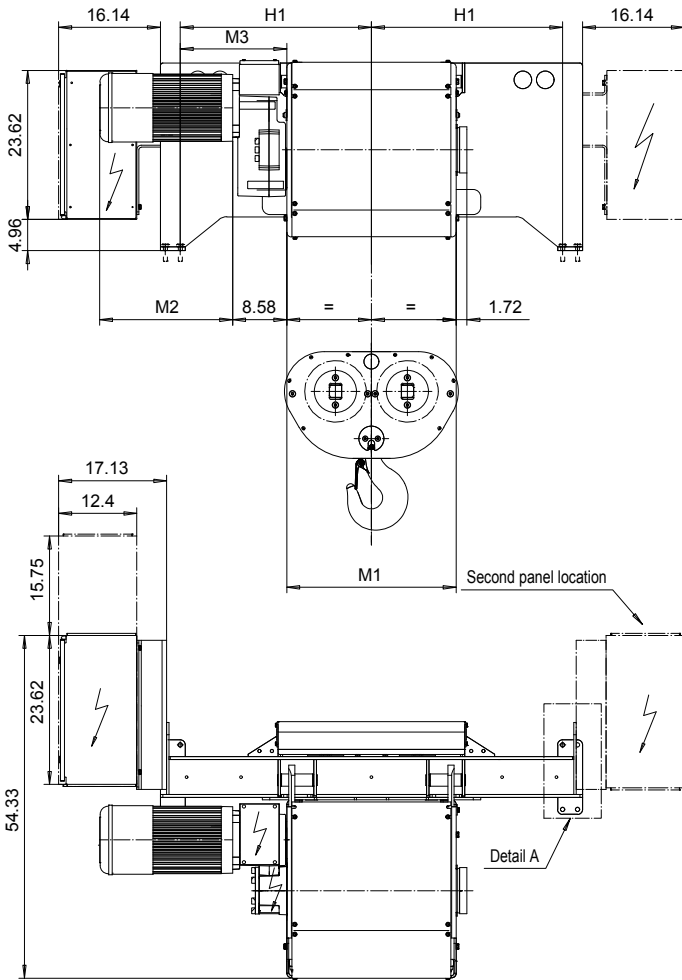


FOOT MOUNT, 4 PART DOUBLE
Hoist type:
SX6 042...F0

US-60Hz



HOL (ft)	Length code	M1 (inch)	M3 (inch)	H1 (inch)	Weight (lb)
26'-3"	E	26.85	16.9	30.3	2867
36'-1"	F	32.75	13.9	30.3	2867
47'-7"	G	40.23	10.2	30.3	3087
64'-0"	H	50.07	17.1	42.1	3528
85'-4"	J	63.85	10.2	42.1	3749
103'-4"	K	75.66	5.3	43.1	4190
126'-4"	L	89.44	-1.6	43.1	4410
141'-1"	M	99.29	4.3	53.9	4851
160'-9"	N	111.10	-1.6	53.9	5292

Load (TON)	Class ASME	Hoisting motor				
		Hoisting speed (ft/min): Gear code				
		16/2.4 : E	20/3.1 : F	25/3.9 : G	30 : H	40 : J
12 1/2	H4+	P6,T6	P6,T6	P7,T7	T8	T9
15	H4	P6,T6	P6,T6	P7,T7	T8	T9
20	H3	P6,T6	P7,T7	P8,T8	T9	TA

Motor	P6,T6,T7,T8,T9	P7,TA	P8
M2 (inch)	21.10	22.67	27.99
Wgt (lb)	179	234	234

Hoist weight calculated with P6 motor weight.

This document is the absolute property of R&M Materials Handling, Inc. This document must not be copied without the written permission of R&M Materials Handling, Inc. The contents thereof must not be disclosed to a third party nor be used for any unauthorized purpose. Contravention will be prosecuted.

ETTPAL Design	ETTPAL Chd	Appd	Ref Drawing	QD-F-24
2002-09-03 Date	HOIST; FIXED			1:13
SLEODOCV Owner Dept	2x4 ROPE FALLS			Folder
R&M MATERIALS HANDLING INC.	R&M MATERIALS HANDLING INC HOIST & CRANE PRODUCTS SPRINGFIELD, OHIO	D006941-A		Issue 1/2011