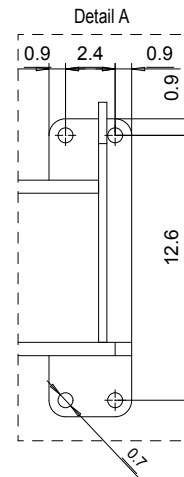
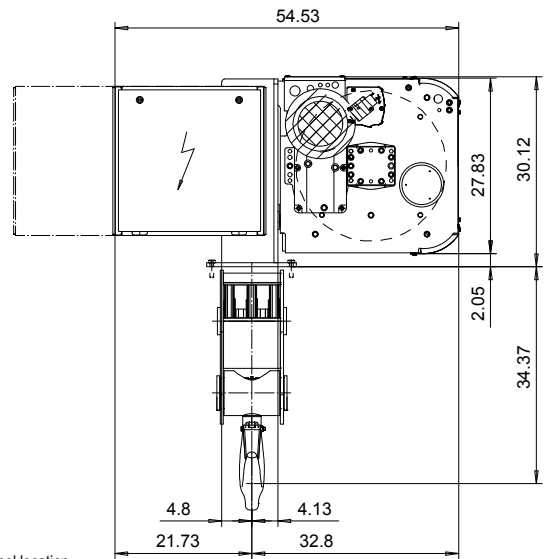
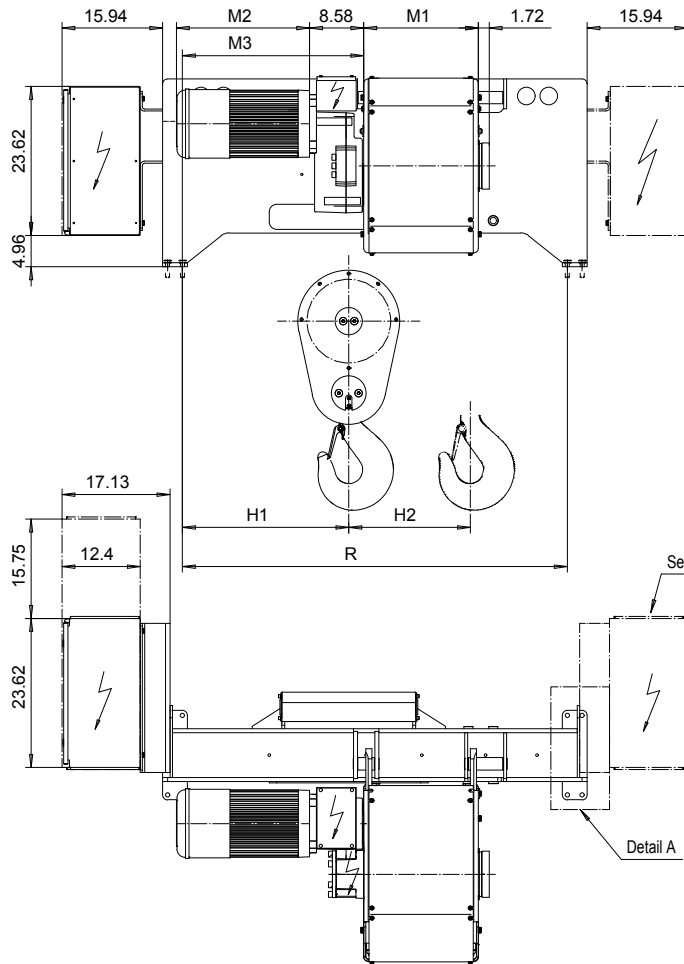


FOOT MOUNT, 6 PART SINGLE

Hoist type:

SX6 061...F0

US-60Hz



HOL (ft)	Length code	R (inch)	M1 (inch)	M3 (inch)	H1 (inch)	H3 (inch)	Weight (lb)
16'-4"	C	61	18.18	28.7	27.2	1.81	2867
22'-11"	D	61	22.12	28.7	27.2	2.48	3087
29'-6"	E	70.1	26.85	22	20.5	3.30	3308
39'-4"	F	70.1	32.75	22	20.5	4.21	3308
50'-10"	G	90.2	40.23	25.2	23.7	5.51	3528
65'-7"	H	90.2	50.07	25.2	23.7	7.16	3969
86'-11"	J	106.3	63.85	31.9	30.4	9.44	4410
105'-0"	K	106.3	75.66	31.9	30.4	11.37	4631

Load (TON)	Class ASME	Hoisting motor				
		Hoisting speed (ft/min): Gear code				
		10/1.5 : E	12.5/1.9 : F	16/2.4 : G	20 : H	25 : J
20	H4+	P6,T6	P6,T6	P7,T7	T8	T9
25	H4	P6,T6	P6,T6	P7,T7	T8	T9
30	H3	P6,T6	P7,T7	P8,T8	T9	TA

Motor	P6,T6,T7,T8,T9	P7,TA	P8
M2 (inch)	21.10	22.67	27.99
Wgt (lb)	179	234	234

Hoist weight calculated with P6 motor weight.

This document is the absolute property of R&M Materials Handling, Inc. This document must not be copied without the written permission of R&M Materials Handling, Inc. The contents thereof must not be disclosed to a third party nor be used for any unauthorized purpose. Contravention will be prosecuted.

ETTPAL Design 2002-09-02 Date	ETTPAL Chd	Appd	Ref Drawing	QD-F-06
SLEODOCV Owner Dept	HOIST; FIXED 6 ROPE FALLS			1:13 Folder
R&M MATERIALS HANDLING INC.	R&M MATERIALS HANDLING, INC. HOIST & CRANE PRODUCTS SPRINGFIELD, OHIO			D006938-A Issue 1/2011