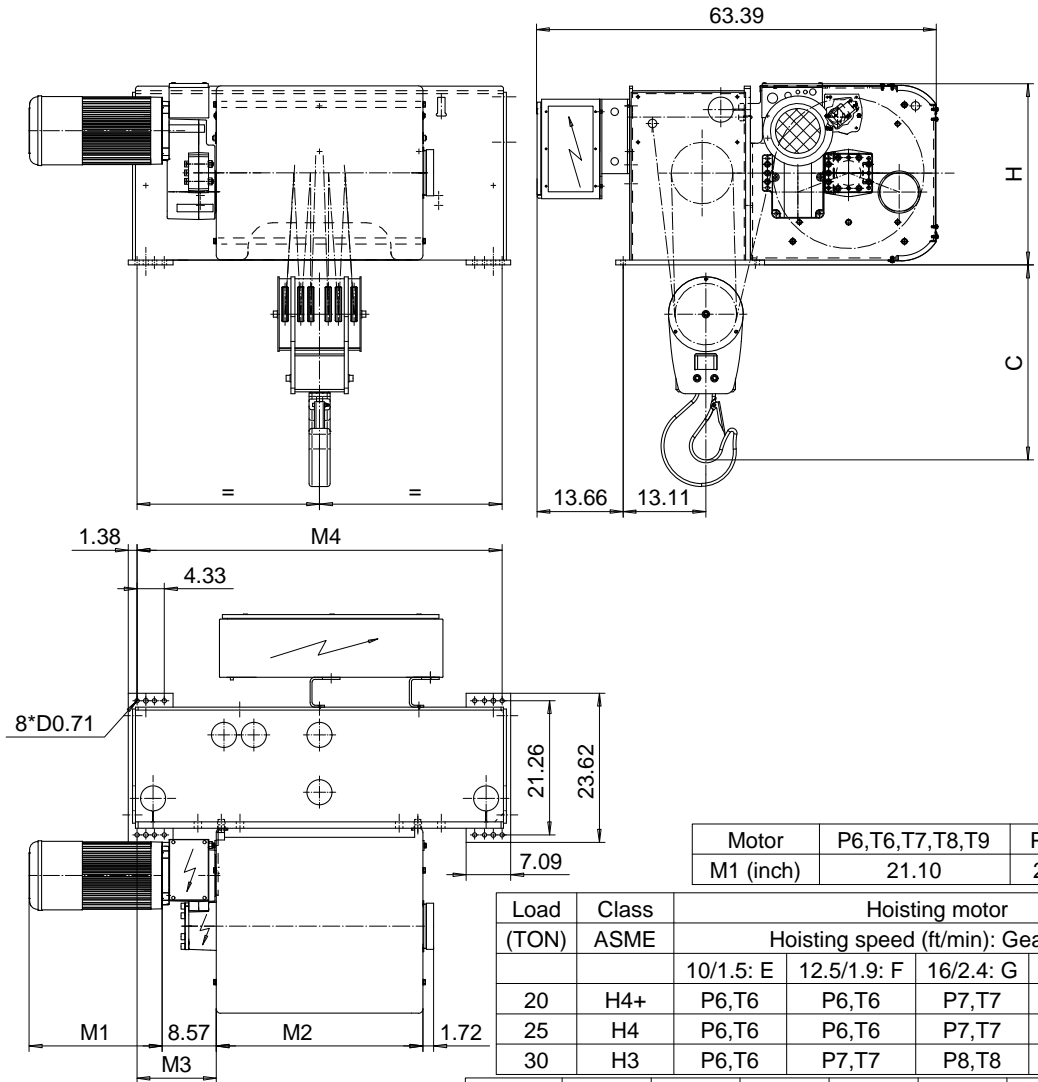


FOOT MOUNT, 6 PART DOUBLE

Hoist type:

SX6 062...F0

US-60Hz



Motor	P6,T6,T7,T8,T9	P7,TA	P8
M1 (inch)	21.10	22.67	27.99

Load (TON)	Class ASME	Hoisting motor				
		Hoisting speed (ft/min): Gear code				
		10/1.5: E	12.5/1.9: F	16/2.4: G	20: H	25: J
20	H4+	P6,T6	P6,T6	P7,T7	T8	T9
25	H4	P6,T6	P6,T6	P7,T7	T8	T9
30	H3	P6,T6	P7,T7	P8,T8	T9	TA

HOL (ft)	Length code	M2 (inch)	M3 (inch)	M4 (inch)	H (inch)	C (inch)	Weight (lb)
18'-1"	E	26.85	15.51	57.87	28.74	30.90	3000
23'-0"	F	32.75	12.56	57.87	28.74	30.90	3100
31'-2"	G	40.23	8.82	57.87	28.74	30.90	3200
42'-8"	H	50.07	23.58	97.24	28.74	36.61	3850
55'-9"	J	63.85	16.69	97.24	28.74	36.61	4050
68'-11"	K	75.66	10.79	97.24	28.74	36.61	4250
83'-8"	L	89.44	17.68	124.80	32.68	36.61	5150
93'-6"	M	99.29	12.76	124.80	32.68	36.61	5350
106'-8"	N	111.10	6.85	124.80	32.68	36.61	5550

ETTPAL Design	ETTPAL Chd	Appd	Ref Drawing	QD-F-26
2002-09-03	HOIST; FIXED			1 of 13 Folder
SLEQDOCV	2x6 ROPE FALLS			
Owner Dept:	D002157-A			6

This document is the absolute property of R&M Materials Handling, Inc. This document must not be copied without the written permission of R&M Materials Handling, Inc. The contents thereof must not be disclosed to a third party nor be used for any unauthorized purpose. Contravention will be prosecuted.