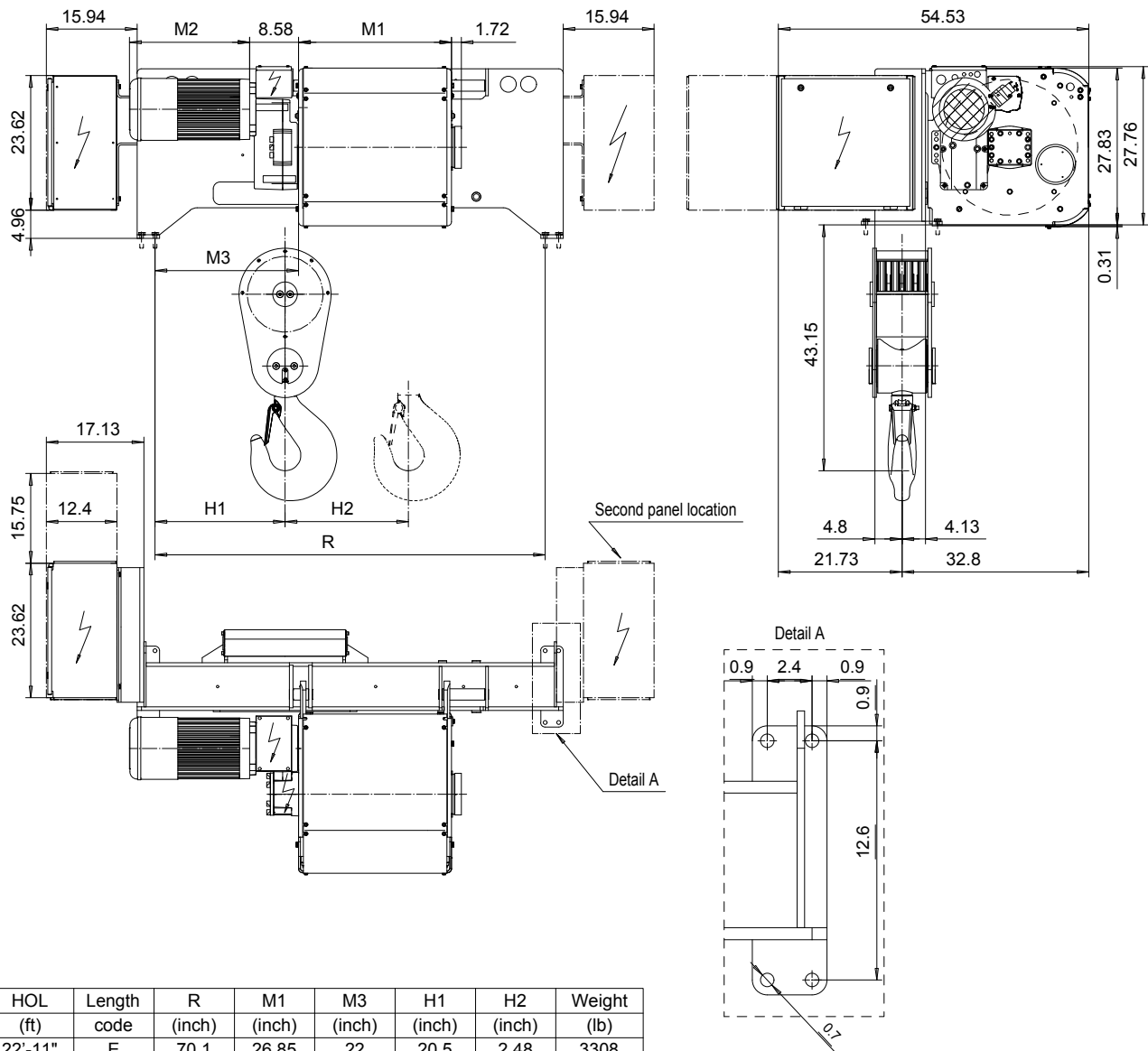


FOOT MOUNT, 8 PART SINGLE

Hoist type:

SX6 081...F0

US-60Hz



HOL (ft)	Length code	R (inch)	M1 (inch)	M3 (inch)	H1 (inch)	H2 (inch)	Weight (lb)
22'-11"	E	70.1	26.85	22	20.5	2.48	3308
29'-6"	F	70.1	32.75	22	20.5	3.18	3528
37'-8"	G	90.2	40.23	25.2	23.7	4.13	3749
49'-2"	H	90.2	50.07	25.2	23.7	5.39	3969
65'-7"	J	106.3	63.85	31.9	30.4	7.08	4631
78'-8"	K	106.3	75.66	31.9	30.4	8.54	4851

Motor	P6,T6,T7,T8,T9	P7,TA	P8
M2 (inch)	21.10	22.67	27.99
Wgt (lb)	179	234	234

Load (TON)	Class ASME	Hoisting motor					
		Hoisting speed (ft/min): Gear code					
		8/1.2: E	10/1.5: F	12.5/1.9: G	12.5: G	16: H	20: J
30	H4	P6,T6	P7,T7	----	T8	T9	TA
40	H3	P6,T6	P7,T7	P8	T8	T9	TA

Hoist weight calculated with P6 motor weight.

This document is the absolute property of R&M Materials Handling, Inc. This document must not be copied without the written permission of R&M Materials Handling, Inc. The contents thereof must not be disclosed to a third party nor be used for any unauthorized purpose. Contravention will be prosecuted.

ETTPAL Design	ETTPAL Chd	Appd	Ref Drawing	QD-F-08
2002-09-02 Date	HOIST; FIXED			
SLEODOCV Owner Dept	8 ROPE FALLS			
R&M MATERIALS HANDLING INC.	R&M MATERIALS HANDLING, INC. HOIST & CRANE PRODUCTS SPRINGFIELD, OHIO			
D006939-A				Issue 1/2011