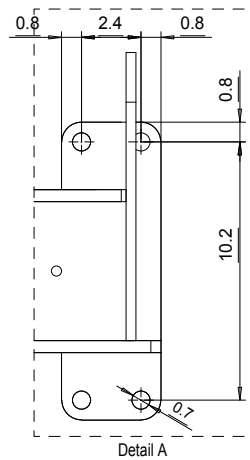
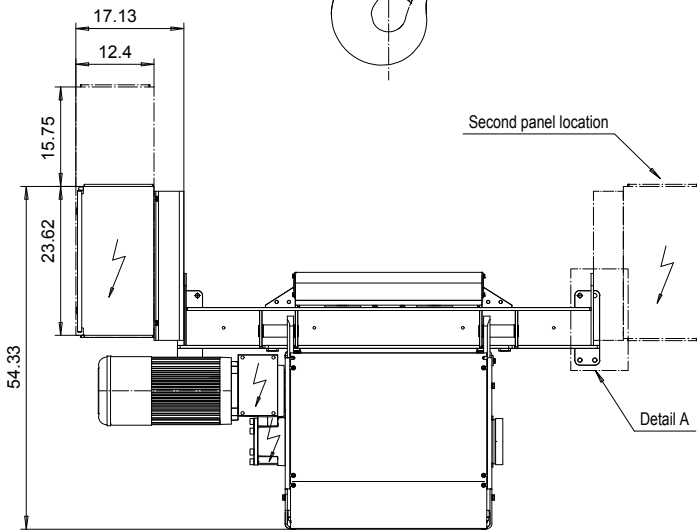
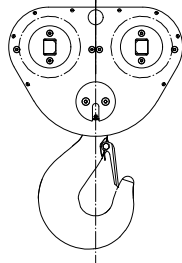
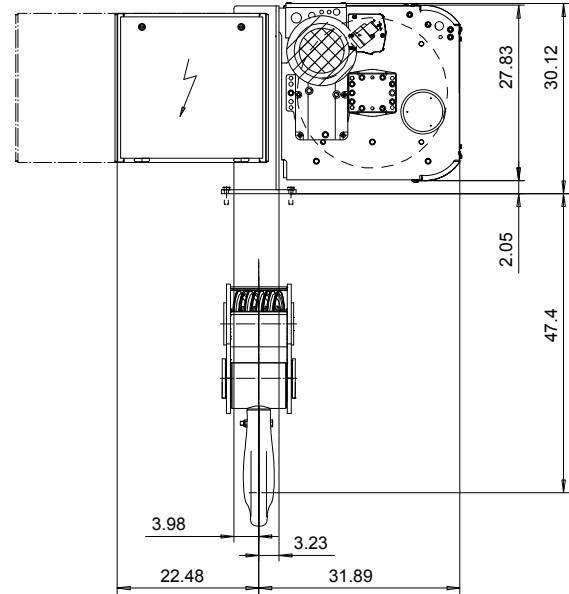
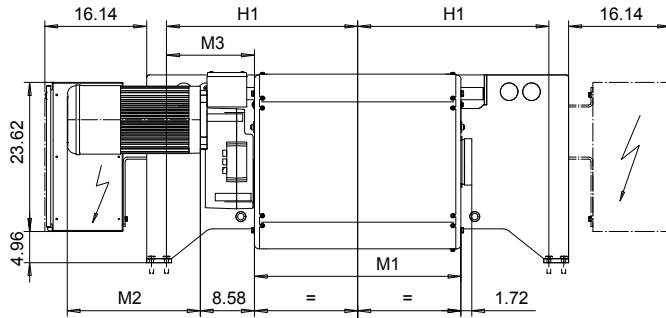


FOOT MOUNT, 8 PART DOUBLE

Hoist type:

US-60Hz

SX6 082...F0



HOL (ft)	Length code	M1 (inch)	M3 (inch)	H1 (inch)	Weight (lb)
18'-1"	F	32.75	13.9	30.3	3308
23'-0"	G	40.23	10.2	30.3	3528
31'-2"	H	50.07	17.1	42.1	3969
42'-8"	J	63.85	10.2	42.1	4190
50'-10"	K	75.66	5.3	43.1	4631
62'-4"	L	89.44	-1.6	43.1	4851
70'-6"	M	99.29	4.3	53.9	5292
80'-5"	N	111.10	-1.6	53.9	5733

Motor	P6,T6,T7,T8,T9	P7,TA	P8
M2 (inch)	21.10	22.67	27.99
Wgt (lb)	179	234	234

Load (TON)	Class ASME	Hoisting motor					
		Hoisting speed (ft/min): Gear code					
		8/1.2: E	10/1.5: F	12.5/1.9: G	12.5: G	16: H	20: J
30	H4	P6,T6	P7,T7	---	T8	T9	TA
40	H3	P6,T6	P7,T7	P8	T8	T9	TA

Hoist weight calculated with P6 motor weight.

This document is the absolute property of R&M Materials Handling, Inc. This document must not be copied without the written permission of R&M Materials Handling, Inc. The contents thereof must not be disclosed to a third party nor be used for any unauthorized purpose. Contravention will be prosecuted.

ETTPAL Design	KHHMKH Chd	Appl	Ref Drawing	QD-F-28
2002-09-03 Date	HOIST; FIXED			
SLEQDQCV Owner Dept	2x8 ROPE FALLS			
R&M MATERIALS HANDLING INC.	R&M MATERIALS HANDLING INC. HOIST & CRANE PRODUCTS SPRINGFIELD, OHIO	D006943-A		1-13 Folder Issue 1/2011