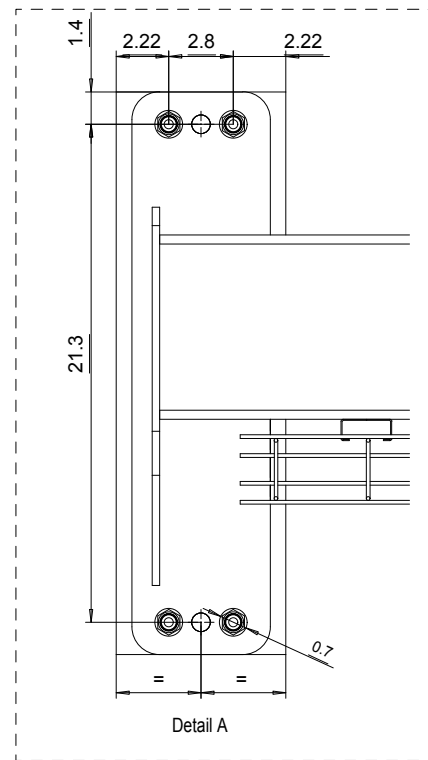
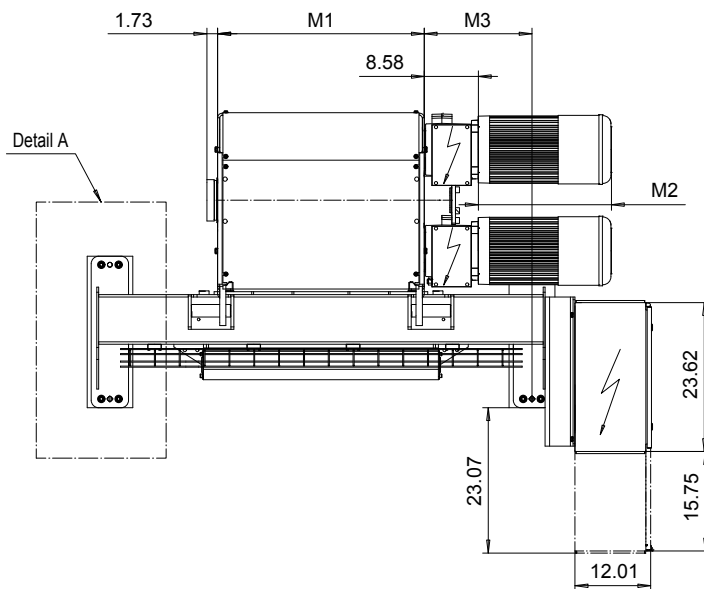
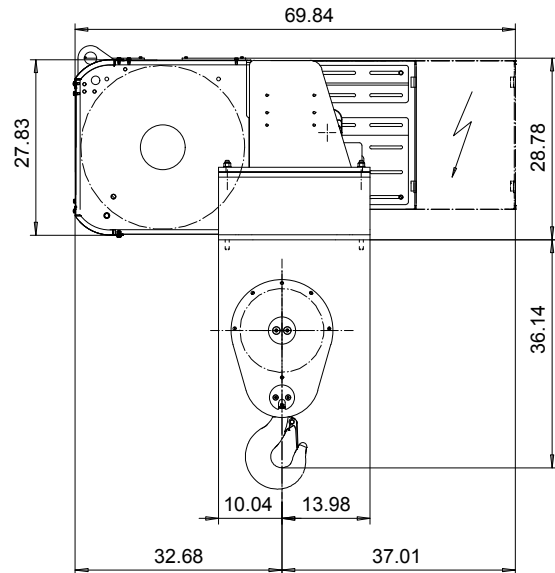
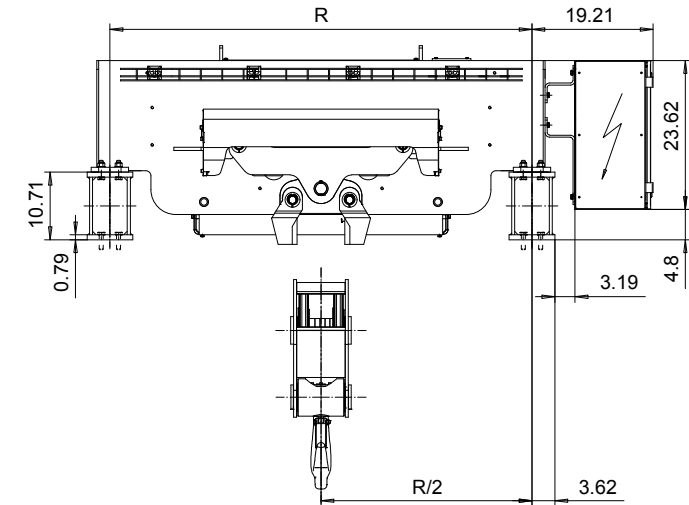


# FOOT MOUNT, 2 PART DOUBLE

Hoist type:

SX7 022...F0

US-60Hz



Load (TON)	Class ASME	Hoisting motor				
		Hoisting speed (ft/min): Gear code				
		32/4.6: E	40/6.2: F	50/7.8: G	63: H	78.7: J
12 1/2	H4+	P6,T6	P6,T6	P7,T7	T8	T9
15	H4	P6,T6	P6,T6	P7,T7	T8	T9
20	H3	P6,T6	P7,T7	T8	T9	-

HOL (ft)	Length code	M1 (inch)	M3 (inch)	R (inch)	Weight (lb)
50'-10"	F	32.75	17.1	66.9	3087
67'-6"	G	40.23	13.3	66.9	3308
90'-2"	H	50.07	22.2	94.5	3528
123'-0"	J	63.85	15.3	94.5	3969
150'-11"	K	75.66	13.3	122	4410
182'-1"	L	89.44	16.3	122	4851
205'-0"	M	99.29	33.1	149.6	5292
232'-11"	N	111.10	27.2	149.6	5733

Motor	P6,T6,T7,T8	P7	T9
M2 (inch)	21.10	22.67	21.1
Wgt (lb)	187	232	203

Hoist weight calculated with P6 motor weight.

This document is the absolute property of R&M Materials Handling, Inc. This document must not be copied without the written permission of R&M Materials Handling, Inc. The contents thereof must not be disclosed to a third party nor be used for any unauthorized purpose. Contravention will be prosecuted.

ETTPAL Design	ETTPAL Ctd	Appd	Ref Drawing	QE-F-22
2003-01-13 Date	HOIST; FIXED			
SLEDDOCV Owner Dept	2x2 ROPE FALLS			
R&M MATERIALS HANDLING INC.	R&M MATERIALS HANDLING INC.	D006944-A		
HOIST & CRANE PRODUCTS SPRINGFIELD, OHIO	1/13 Folder			
Issue				1/2011