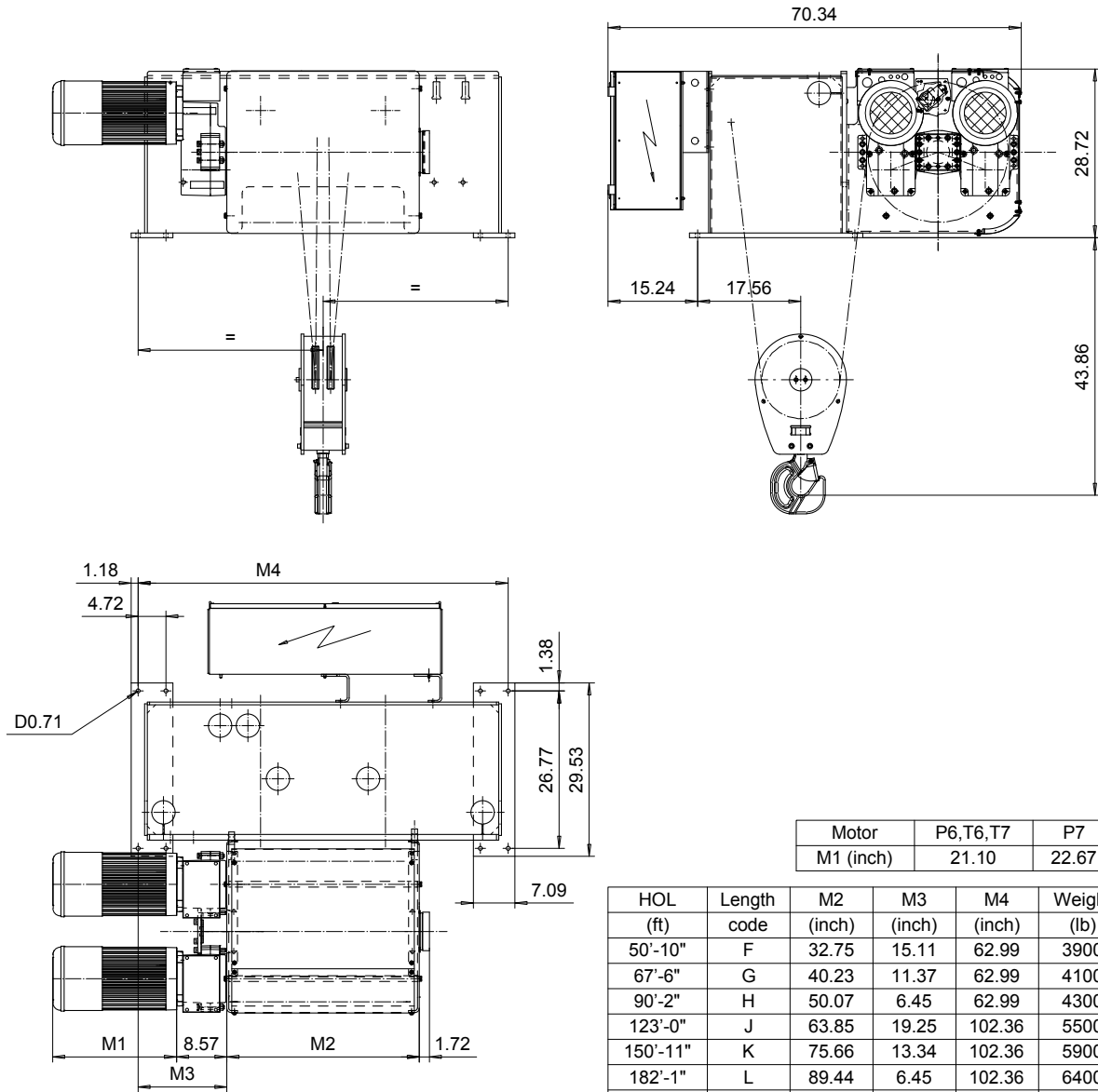


FOOT MOUNT, 2 PART DOUBLE
Hoist type:
SX7 022...F0

US-60Hz



Motor	P6,T6,T7	P7
M1 (inch)	21.10	22.67

HOL (ft)	Length code	M2 (inch)	M3 (inch)	M4 (inch)	Weight (lb)
50'-10"	F	32.75	15.11	62.99	3900
67'-6"	G	40.23	11.37	62.99	4100
90'-2"	H	50.07	6.45	62.99	4300
123'-0"	J	63.85	19.25	102.36	5500
150'-11"	K	75.66	13.34	102.36	5900
182'-1"	L	89.44	6.45	102.36	6400
205'-0"	M	99.29	18.26	135.82	7400
232'-11"	N	111.10	12.36	135.82	7800

Load (TON)	Class ASME	Hoisting motor				
		Hoisting speed (ft/min): Gear code				
		31.5/4.6: E	40/6.2: F	50/7.8: G	63: H	78.7: J
12 1/2	H4+	P6,T6	P6,T6	P7,T7	T8	T9
15	H4	P6,T6	P6,T6	P7,T7	T8	T9
20	H3	P6,T6	P7,T7	T8	T9	-

ETFPAL	ETFPAL	Appd	Ref Drawing	QE-F-22
Design	2003-01-13	HOIST; FIXED		
Date	SLEQDOCV	2x2 ROPE FALLS		
Owner Dept	R&M	D002331-A		
Issue	5	1 of 13		

This document is the absolute property of R&M Materials Handling, Inc. This document must not be copied without the written permission of R&M Materials Handling, Inc. The contents thereof must not be disclosed to a third party nor be used for any unauthorized purpose. Contravention will be prosecuted.